



# Key facts about pupil learning, teaching and school management in Western Rural District



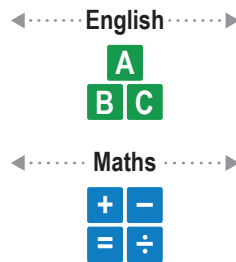
This factsheet is based on findings from the Secondary Grade Learning Assessment (2018).



## Fact 1

In Western Rural District, learning levels of JSS2 and SSS2 pupils are low in both English and Mathematics.

JSS2 pupils that show only up to P6 level skills



SSS2 pupils that show only up to P6 level skills



Average learning levels in Western Rural are similar to the national average

## Fact 2

In Western Rural District, English learning levels of JSS2 girls and boys are similar, but SSS2 girls score lower than SSS2 boys.

Pupils that show only up to P6 level skills in English

JSS2 pupils 2 or more years behind

SSS2 pupils 5 or more years behind

Girls

55%



48%



SSS2 girls' skills are more limited to lower grades (P6 or below) than boys

Boys

53%



31%



Gender-based differences are similar in Western Rural and at the national level

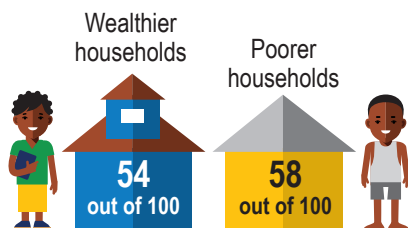
## Fact 3

Pupils from wealthier households perform better than pupils from poorer households in Western Rural District.

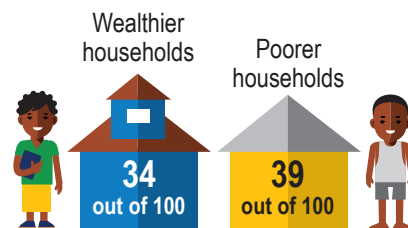
JSS2 pupils

SSS2 pupils

In Western Rural pupils from wealthier households score higher in mathematics as well



Show only up to P6 level skills in English 2 or more years behind

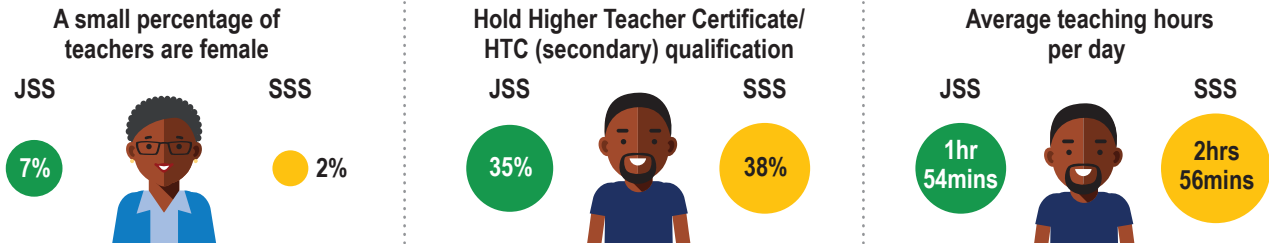


Show only up to P6 level skills in English 5 or more years behind

Wealth-based differences are lower in Western Rural than at the national level

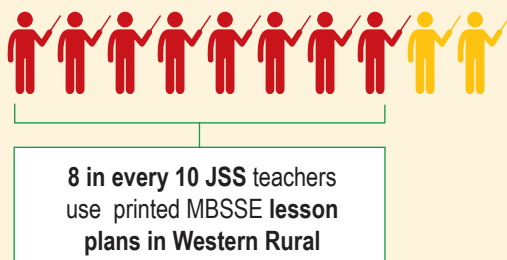
**Fact 4**

In Western Rural District, a small percentage of JSS and SSS teachers are female. Teacher characteristics in **Western Rural District** are similar to the **national average statistics**.

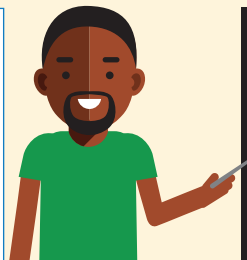


**Fact 5**

77% of JSS teachers now use printed MBSSE lesson plans in Western Rural District. However, 65% of these teachers find it difficult to link learning objectives to the appropriate grade level.



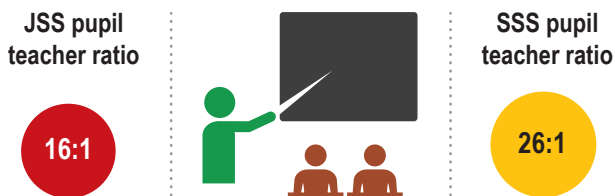
6 out of 10 JSS teachers that use lesson plans in Western Rural are unable to link learning objectives to the appropriate grade level



In Western Rural, a similar fraction of teachers make the right links, as at the national level, where only 4 in 10 teachers are able to do so

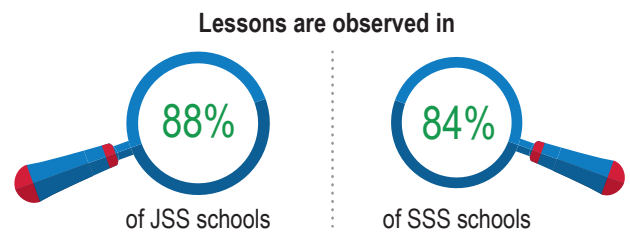
**Fact 6**

A typical JSS school in Western Rural District has 16 pupils per teacher. The pupil-teacher ratio is larger in SSS schools.



**Fact 7**

Lesson observations are conducted in most schools in Western Rural District.



While the **JSS2 PTR** ratio is lower in **Western Rural** than at the **national level**, the **SSS2 PTR** ratio is comparatively **higher**. **Lesson observations** in **Western Rural** compare **similarly** to the **national level**.

**Fact 8**

Nearly all schools have parent-teacher or community-teacher associations in Western Rural District. Most of these bodies are active, having met at-least once in the current or previous term.



The percentage of **active** PTA/CTA bodies is **similar** in **Western Rural** and at the **national level**

**Contact details**

For more details please contact: **Diana Ofori-Owusu** at **+232 76803741**

Any views and opinions expressed do not necessarily reflect those of UK Department for International Development (DFID) or the Sierra Leone Ministry of Basic and Senior Secondary Education (MBSSE).