



Key facts about pupil learning, teaching and school management in Moyamba District



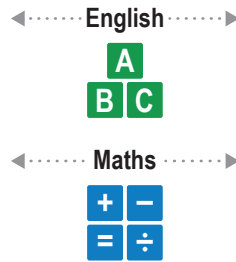
This factsheet is based on findings from the Secondary Grade Learning Assessment (2018).



Fact 1

In Moyamba, learning levels of JSS2 and SSS2 pupils are low in both English and Mathematics.

JSS2 pupils that show only up to P6 level skills



SSS2 pupils that show only up to P6 level skills



Average learning levels in Moyamba are lower than the national average

Fact 2

Learning levels of girls are lower than that of boys in Moyamba.

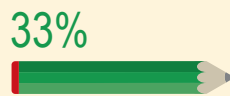
Pupils that show only up to P6 level skills in English

JSS2 pupils 2 or more years behind

SSS2 pupils 5 or more years behind



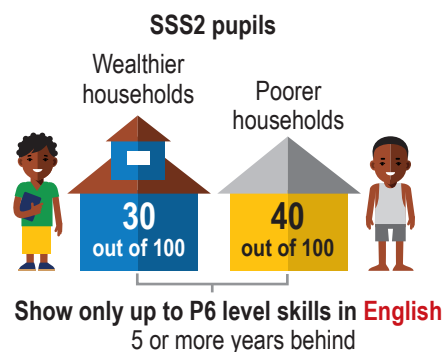
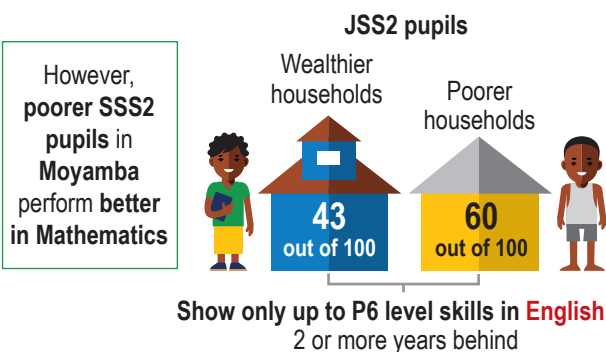
SSS2 girls' skills are more limited to lower grades (P6 or below) than boys



Gender-based differences are larger in Moyamba than at the national level

Fact 3

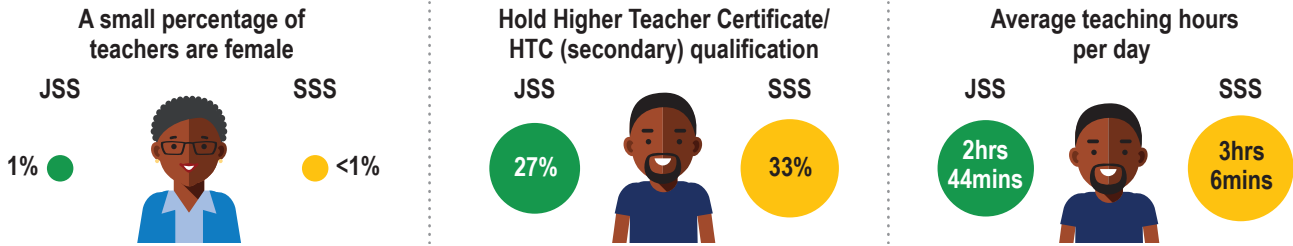
Pupils from wealthier households perform better in English than pupils from poorer households at both JSS2 and SSS2 levels in Moyamba.



Wealth-based English learning differences are similar in Moyamba as at the national level

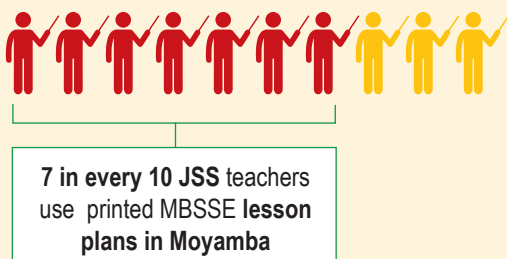
Fact 4

In Moyamba, a small percentage of JSS and SSS teachers are female. Teacher characteristics in Moyamba are similar to the **national average statistics**.



Fact 5

71% of JSS teachers now use printed MBSSE lesson plans in Moyamba. However, 45% of these teachers find it difficult to link learning objectives to the appropriate grade level.



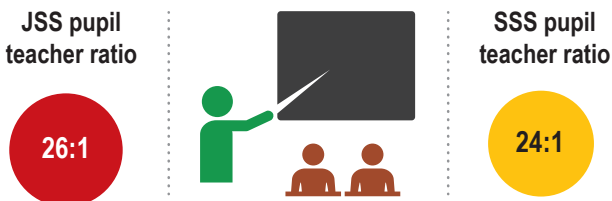
5 out of 10 JSS teachers that use lesson plans in Moyamba are unable to link learning objectives to the appropriate grade level



In Moyamba, a larger fraction of teachers make the right links, than at the national level, where only 4 in 10 teachers are able to do so

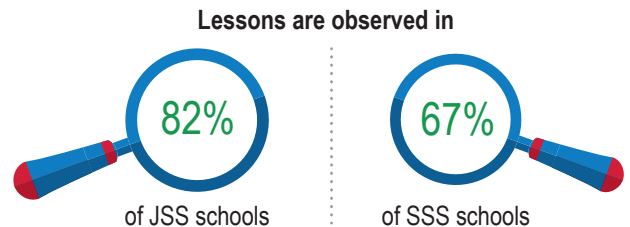
Fact 6

A typical JSS school in Moyamba has 26 pupils per teacher. The pupil-teacher ratio is similar in SSS schools.



Fact 7

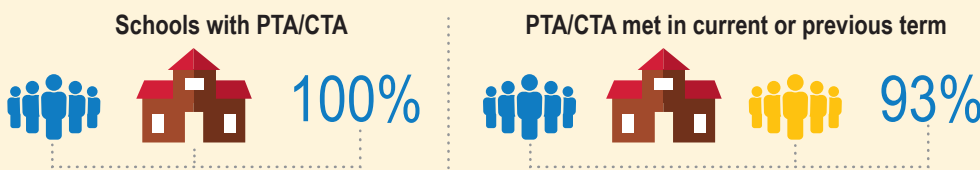
Lesson observations are conducted in the majority of schools in Moyamba.



PTR ratios in Moyamba are higher than the national averages. However, the percentage of lesson observations in Moyamba is lower than the national average

Fact 8

All schools have parent-teacher or community-teacher associations in Moyamba. Most of these bodies are active, having met at-least once in the current or previous term.



The percentage of active PTA/CTA bodies is similar in Moyamba and at the national level

Contact details

For more details please contact: **Diana Ofori-Owusu** at +232 76803741

Any views and opinions expressed do not necessarily reflect those of UK Department for International Development (DFID) or the Sierra Leone Ministry of Basic and Senior Secondary Education (MBSSE).