



Key facts about pupil learning, teaching and school management in Karene District



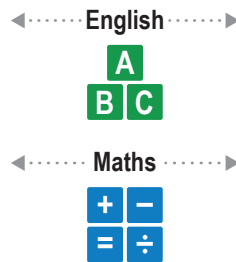
This factsheet is based on findings from the Secondary Grade Learning Assessment (2018).



Fact 1

In Karene, learning levels of JSS2 and SSS2 pupils are low in both English and Mathematics.

JSS2 pupils that show only up to P6 level skills



SSS2 pupils that show only up to P6 level skills



Average learning levels in Karene are lower than the national average

Fact 2

In Karene, girls score lower than boys in English and Mathematics.

Pupils that show only up to P6 level skills in English

JSS2 pupils 2 or more years behind

SSS2 pupils 5 or more years behind

Girls

69%



70%



SSS2 girls' skills are more limited to lower grades (P6 or below) than boys

Boys

63%



31%



Gender-based differences are larger in Karene than at the national level

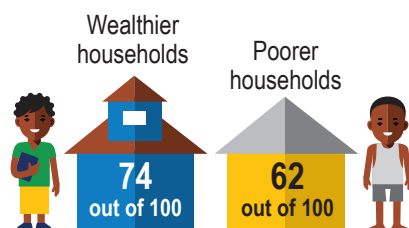
Fact 3

SSS2 pupils from wealthier households perform much better than pupils from poorer households in Karene. However, poorer JSS2 schools perform better in English than wealthier JSS2 pupils.

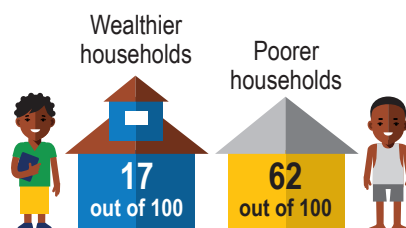
JSS2 pupils

SSS2 pupils

Wealthier SSS2 pupils from Karene perform better in mathematics as well



Show only up to P6 level skills in English 2 or more years behind

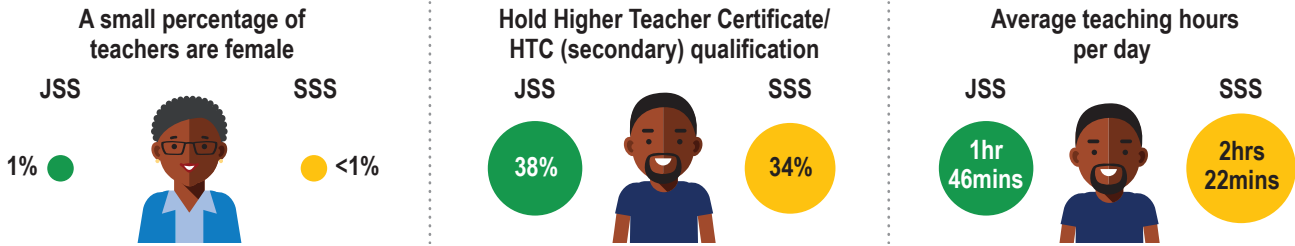


Show only up to P6 level skills in English 5 or more years behind

Wealth-based differences at JSS2 level in Karene favour poorer pupils. At SSS2 level, wealth-based differences favour richer pupils and are larger in Karene than at the national level

Fact 4

In Karene, a small percentage of JSS and SSS teachers are female. Most teacher characteristics in **Karene** are similar to the **national average statistics**.



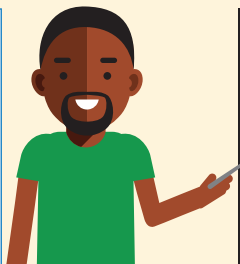
Fact 5

All JSS teachers now use printed MBSSE lesson plans in Karene. However, 61% of these teachers find it difficult to link learning objectives to the appropriate grade level.



10 in every 10 JSS teachers use printed MBSSE lesson plans in Karene

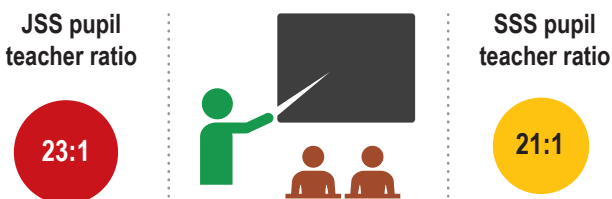
6 out of 10 JSS teachers that use lesson plans in Karene are unable to link learning objectives to the appropriate grade level



In Karene, a similar fraction of teachers make the right links, as at the national level, where only 4 in 10 teachers are able to do so

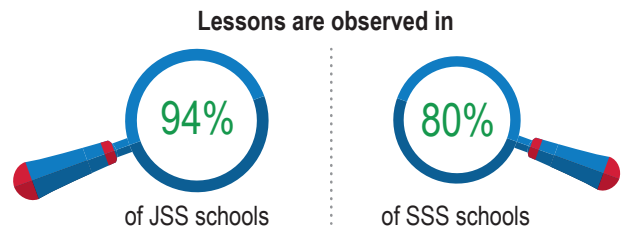
Fact 6

A typical JSS school in Karene has 23 pupils per teacher. The pupil-teacher ratio is similar in SSS schools.



Fact 7

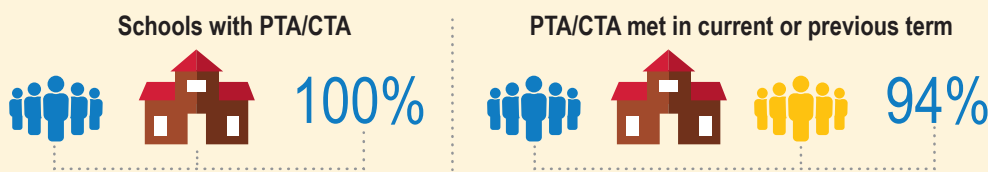
In Karene, lesson observations are conducted in most schools.



PTR ratios and the lesson observations in Karene compare similarly to the national averages

Fact 8

All schools have parent-teacher or community-teacher associations in Karene. Most of these bodies are active, having met at-least once in the current or previous term.



The percentage of active PTA/CTA bodies is higher in Karene than at the national level

Contact details

For more details please contact: **Diana Ofori-Owusu** at +232 76803741

Any views and opinions expressed do not necessarily reflect those of UK Department for International Development (DFID) or the Sierra Leone Ministry of Basic and Senior Secondary Education (MBSSE).