



# Key facts about pupil learning, teaching and school management in Falaba District



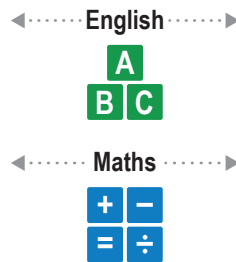
This factsheet is based on findings from the Secondary Grade Learning Assessment (2018).



## Fact 1

In Falaba, learning levels of JSS2 and SSS2 pupils are low in both English and Mathematics.

JSS2 pupils that show only up to P6 level skills



SSS2 pupils that show only up to P6 level skills



Average learning levels in Falaba are lower than the national average

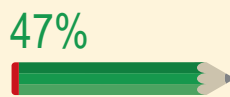
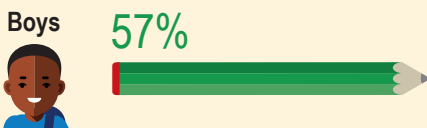
## Fact 2

In Falaba, learning levels of girls are lower than that of boys.

Pupils that show only up to P6 level skills in English

JSS2 pupils 2 or more years behind

SSS2 pupils 5 or more years behind

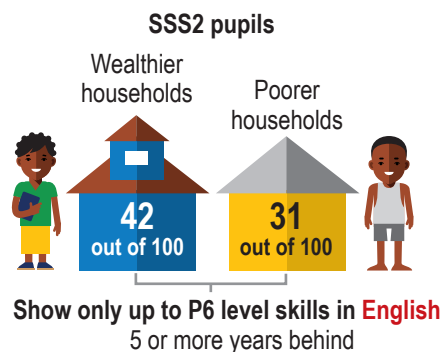
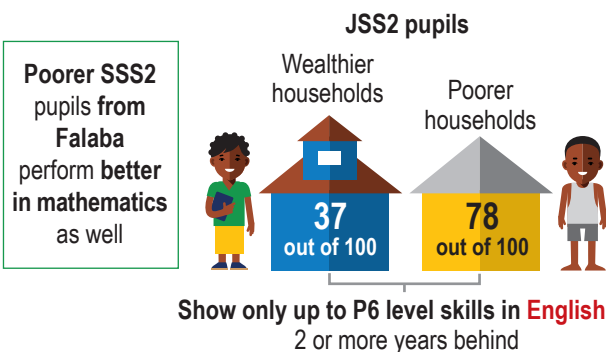


Girls' skills in mathematics are also lower than boys

Gender-based differences are larger in Falaba than at the national level

## Fact 3

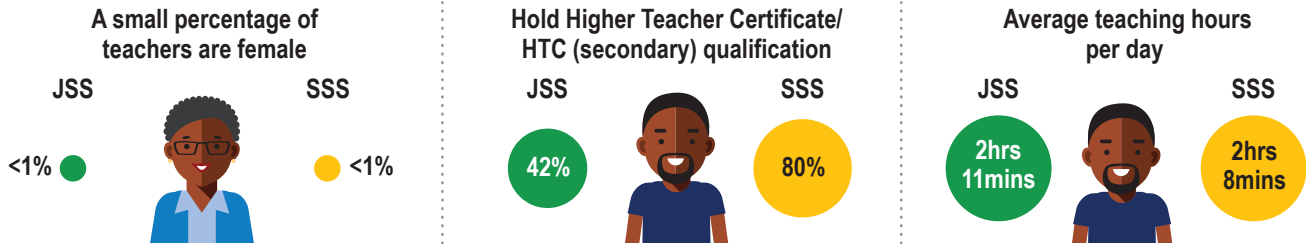
JSS pupils from wealthier households perform better than pupils from poorer households in Falaba. However, in SSS schools, learning levels of the poorer pupils are higher than the wealthier pupils.



Wealth-based differences amongst SSS2 pupils are more in favour of poorer households in Falaba than at the national level

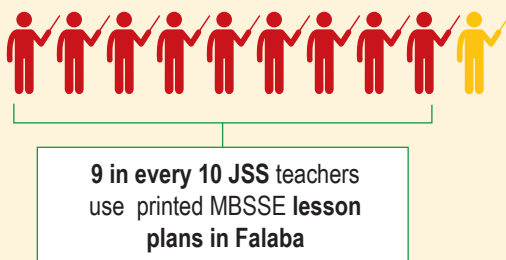
**Fact 4**

In Falaba, a small percentage of JSS and SSS teachers are female. Most teacher characteristics in Falaba are similar to the **national average statistics**.



**Fact 5**

86% of JSS teachers now use printed MBSSE lesson plans in Falaba. However, 77% of these teachers find it difficult to link learning objectives to the appropriate grade level.



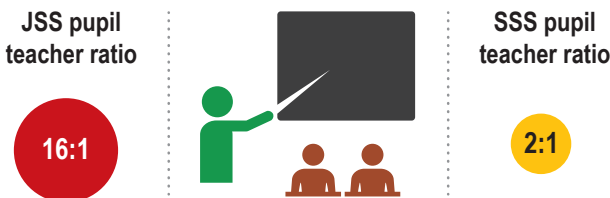
8 out of 10 JSS teachers that use lesson plans in Falaba are unable to link learning objectives to the appropriate grade level



In Falaba, a smaller fraction (2 in 10) of teachers make the right links, than at the national level, where only 4 in 10 teachers are able to do so

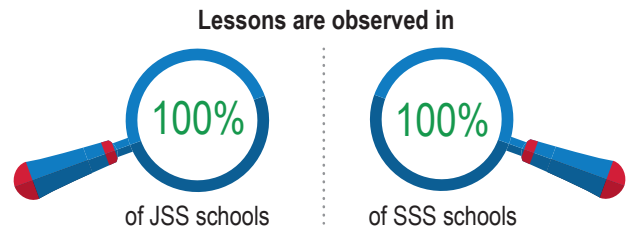
**Fact 6**

A typical JSS school in Falaba has 16 pupils per teacher. The pupil-teacher ratio is much lower in SSS schools.



**Fact 7**

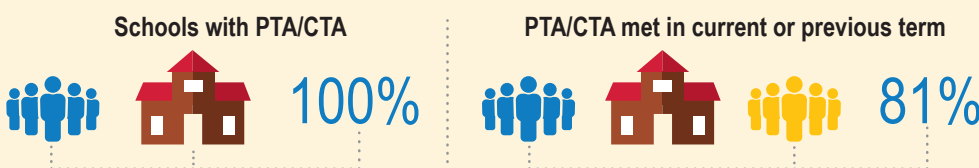
Lesson observations are conducted in every school in Falaba.



PTR ratio for SSS2 level is much lower in Falaba compared to the national average. However, the percentage of lesson observations is higher in Falaba than at national level

**Fact 8**

All schools have parent-teacher or community-teacher associations in Falaba. Most of these bodies are active, having met at-least once in the current or previous term.



The percentage of active PTA/CTA bodies is similar in Falaba and at the national level

**Contact details**

For more details please contact: **Diana Ofori-Owusu** at +232 76803741

Any views and opinions expressed do not necessarily reflect those of UK Department for International Development (DFID) or the Sierra Leone Ministry of Basic and Senior Secondary Education (MBSSE).