



Key facts about pupil learning, teaching and school management in Bombali District



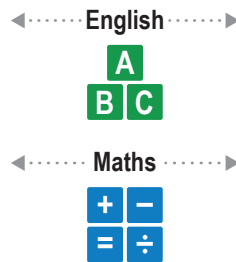
This factsheet is based on findings from the Secondary Grade Learning Assessment (2018).



Fact 1

In Bombali, learning levels of JSS2 and SSS2 pupils are low in both English and Mathematics.

JSS2 pupils that show only up to P6 level skills



SSS2 pupils that show only up to P6 level skills



Average learning levels in Bombali are lower than the national average

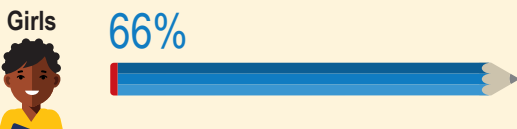
Fact 2

In Bombali, learning levels of JSS2 girls and boys are similar, but SSS2 girls score lower than SSS2 boys.

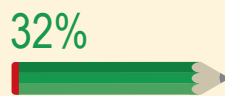
Pupils that show only up to P6 level skills in English

JSS2 pupils 2 or more years behind

SSS2 pupils 5 or more years behind



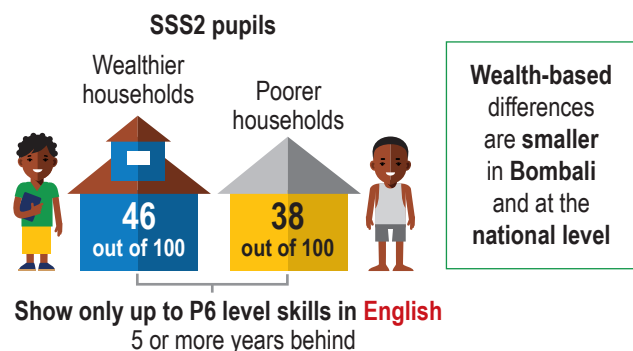
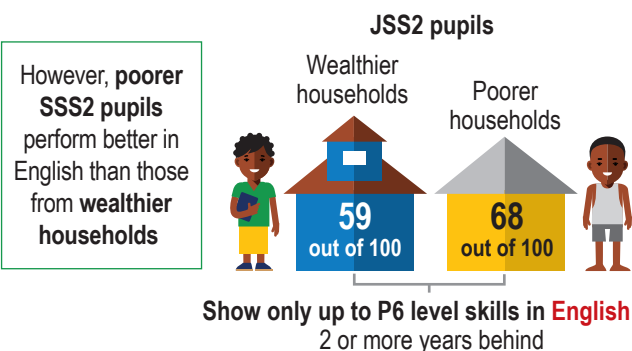
SSS2 girls' skills are more limited to lower grades (P6 or below) than boys



Gender-based differences are larger in Bombali than at the national level

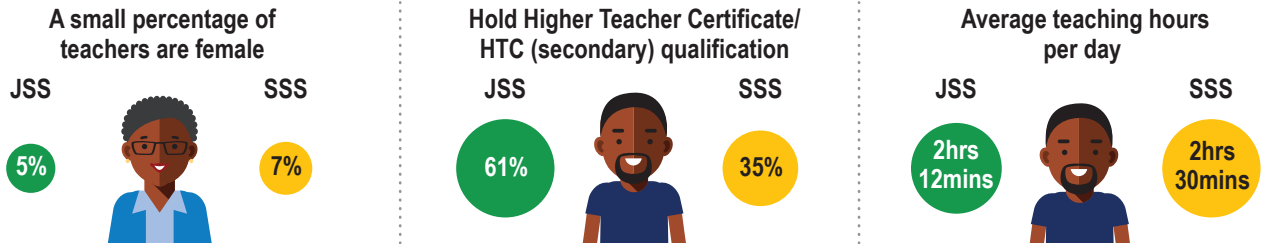
Fact 3

JSS2 pupils from wealthier households perform better than pupils from poorer households in Bombali.



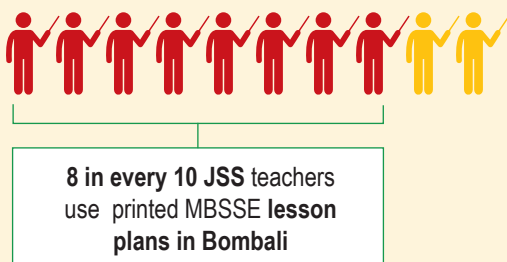
Fact 4

In Bombali, a small percentage of JSS and SSS teachers are female. Teacher characteristics in **Bombali** are similar to the **national average statistics**.



Fact 5

83% of JSS teachers now use printed MBSSE lesson plans in Bombali. However, 66% of these teachers find it difficult to link learning objectives to the appropriate grade level.



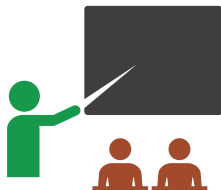
7 out of 10 JSS teachers that use lesson plans in **Bombali** are unable to link learning objectives to the appropriate grade level



In Bombali, a smaller fraction (3 in 10) of teachers make the **right links**, than at the national level, where 4 in 10 teachers are able to do so

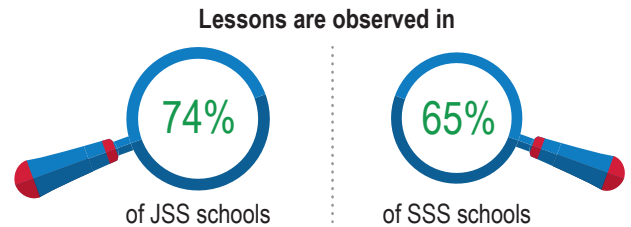
Fact 6

A typical JSS school in Bombali has 19 pupils per teacher. The pupil-teacher ratio is larger in SSS schools.



Fact 7

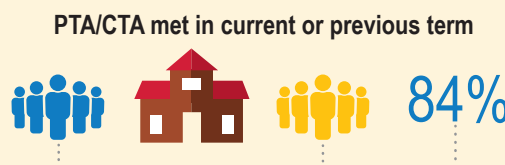
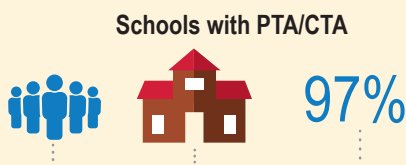
Lesson observations in Bombali are conducted in the majority of schools.



PTR ratios are similar in **Bombali** and at the national level. However, the percentage of lesson observations in **Bombali** is lower in relation to the national average.

Fact 8

All schools in Bombali have parent-teacher or community-teacher associations. Most of these bodies are active, having met at-least once in the current or previous term.



The percentage of active PTA/CTA bodies is similar in **Bombali** and at the national level

Contact details

For more details please contact: **Diana Ofori-Owusu** at +232 76803741

Any views and opinions expressed do not necessarily reflect those of UK Department for International Development (DFID) or the Sierra Leone Ministry of Basic and Senior Secondary Education (MBSSE).