

DEPARTMENT OF
EDUCATION

LOWER SECONDARY
SCHOOL
CERTIFICATE
EXAMINATIONS
(LSSCE)

HOME
ECONOMICS

Wednesday
12th October 2016

Time allowed: 1 hour 30
minutes

Candidates are advised to
fully use the time
allocated

HE

INSTRUCTIONS TO CANDIDATES:

(To be read out by the external invigilator before the start of the examination)

There are **36** questions worth **40** marks in this paper. Attempt **ALL** questions even if you are not so sure of some of the answers.

The Examination is divided into three parts:

PART A: Multiple Choice (Questions 1 to 20)

PART B: Short Answer (Questions 21 to 35)

PART C: Extended Response (Questions 36)

The Answer Sheet is part of the Examination Booklet. Take out the middle pages and remove the Answer Sheet by tearing along the perforation. You may use the blank sheet for rough work.

Write your candidate number, name and school name in the space provided on the Answer Sheet.

For each question in **PART A**, choose the correct answer by writing letter A, B, C or D in the space provided on the **ANSWER SHEET**.

For each question in **PART B** and **C** work out the answer and write the answer in the space provided on the **ANSWER SHEET**.

If you find a question very difficult, do not spend too much time thinking about it. Skip the question and go on with the rest of the paper. If you have time in the end, return to the difficult questions and think about them more carefully.

Write your answers in **BLUE** or **BLACK** ink (pen or biro).

If you decide to change an answer, make your correction as shown below so that it is clear to the markers what your final answer is. Do **NOT** use correction fluid on your answer sheet.



Hand in **BOTH** the Answer Sheet and the papers used for rough work at the end of the examination.

Extra time will NOT be allowed to complete the examination under any circumstances.

Penalty for cheating or assisting to cheat in national examinations is non-certification.

**DO NOT TURN OVER THIS PAGE AND DO NOT
WRITE UNTIL YOU ARE TOLD TO START.**

PART A: MULTIPLE CHOICE**(QUESTIONS 1 to 20)****20 MARKS**

For each question choose the correct answer and write A, B, C, or D in the space provided on the ANSWER SHEET.

QUESTION 1

What main nutrient do the flesh of animals provide?

- A. Fats B. Vitamins C. Protein D. Calcium

QUESTION 2

The use of threads to sew designs onto fabrics is called _____.

- A. batik B. printing C. applique D. embroidery

QUESTION 3

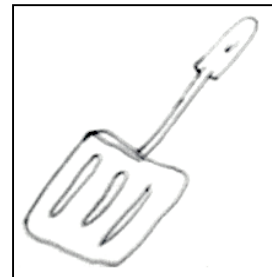
Cotton can be classified as _____ fibre.

- A. plant B. synthetic C. animal D. man-made

QUESTION 4

What is the function of the utensil shown on the right?

- A. To open tops of tins or cans.
 B. Turn or lift food cooking in a frying pan.
 C. To scrape mixture from the sides of a bowl.
 D. To scoop liquid from a large container to serving dishes.

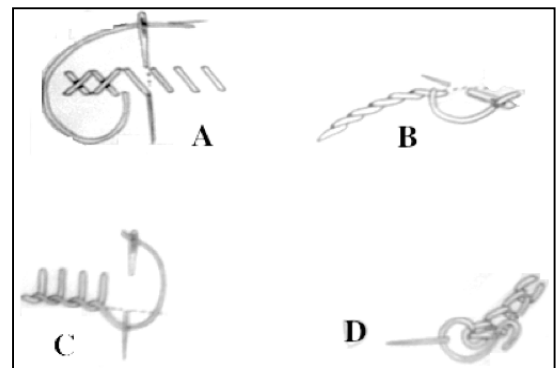


For Questions 5 and 6, refer to the four different types of stitches below.

QUESTION 5

The stitch found in **B** is referred to as the _____ stitch.

- A. stem B. running
 C. blanket D. herringbone

**QUESTION 6**

Which of the following stitches is NOT displayed above?

- A. stem B. running C. blanket D. herringbone

QUESTION 7

Too much cooking oil should not be put in a shallow frying pan because hot oil can _____ out and ignite fire.

- A. run B. fly C. spit D. pour

QUESTION 8

Fructose is a simple sugar. A good source of fructose is _____.

- A. nuts B. fruits C. cereals D. vegetables

QUESTION 9

Which of the different fibres below is an animal fibre?

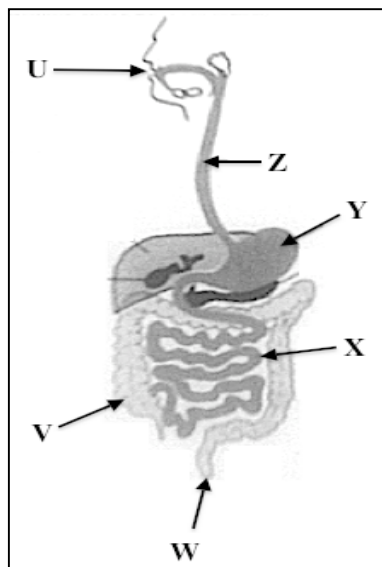
- A. Sisal B. Kapok C. Acetate D. Mohair

QUESTION 10

In the last hundred years scientists have made technological advances that have resulted in the development of manufactured fibres. These are _____ fibres.

- A. plant B. natural C. animal D. artificial

For Questions 11 and 12, refer to the diagram of the human digestive system below.

**QUESTION 11**

In which part of the digestive system is the nutrient protein acted upon by pepsin (protein-digesting enzyme)?

- A. U B. V C. Y D. Z

QUESTION 12

Absorption of digested food takes place in structure _____.

- A. V B. X C. Y D. Z

QUESTION 13

During the washing-up procedure, the cleanest items are washed first.

Which items below will be washed first following the correct washing up procedure?

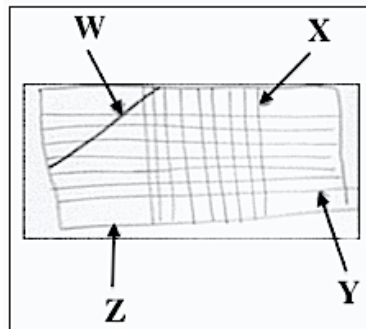
- A. Saucepan and bowl B. Cutlery and saucepan
C. Glassware and tin ware D. Cutlery and glassware

QUESTION 20

Study the opposite diagram of a piece of woven fabric.

Which letter represents the warp threads?

- A. W B. X
C. Y D. Z



PART B: SHORT ANSWERS (QUESTIONS 21 - 35)**15 MARKS**

For each question, write the correct answer in the space provided on the Answer Sheet.

QUESTION 21

The method of cooking that would be suitable for making doughnuts is deep _____.

QUESTION 22

What is the name of the popular method of printing on laplap or shirts?

QUESTION 23

Applique comes from the French word appliquer, which means “to put ___”.

For Questions 24 and 25, refer to the information below.

Your mother is preparing chicken stew for dinner. You will be having the stew with mashed potato and each of the following coloured vegetable to compliment the stew.

- purple fruit vegetable.
- orange root vegetable.
- green seed vegetable.

QUESTION 24

Name one orange coloured root vegetable.

QUESTION 25

Name one fruit vegetable that is purple in colour.

QUESTION 26

Almost all parts of plants are used as food.

What part of the plant would this be should it contains seed and is juicy, sweet or acidic?

QUESTION 27

The correct way of placing a pot on the stove is by having the _____ placed away from people who are moving about in the kitchen.

QUESTION 28

Cellulose is found in fruits and vegetables. It is important as it provides roughage in the diet and prevents _____.

QUESTION 29

Wool and cotton fibres are often twisted to produce a blended _____.

For Questions 30 and 31, refer to the information below.

The table below shows nutrients, functions and their deficiency disease. However some information on the table are incomplete. Study part of the given information and fill in the missing nutrients.

QUESTION 30

What is the name of Vitamin (ii)?

Nutrient	Function	Deficiency Disease
Vitamin ____ (i) ____	<ul style="list-style-type: none"> • Aids night blindness • Keeps skin healthy • Assists growth 	<ul style="list-style-type: none"> • Night blindness • Dry infected skin • Poor growth
Vitamin ____ (ii) ____	<ul style="list-style-type: none"> • Healing of wounds 	<ul style="list-style-type: none"> • Loose teeth • Bleeding gums • Scurvy
____ (iii) ____	<ul style="list-style-type: none"> • For all body fluids • Helps in digestion and absorption • Helps regulate body temperature 	<ul style="list-style-type: none"> • dehydration

QUESTION 31

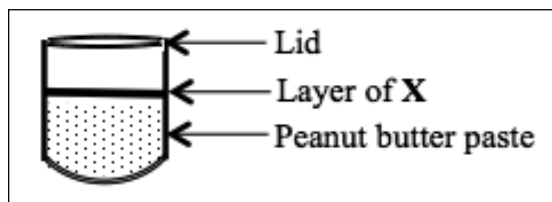
Which number represents Vitamin A?

For Questions 32 and 33, refer to the diagram of the peanut butter bottle below.

QUESTION 32

In most peanut butter bottles, you would find a layer of **X** on top of the peanut butter paste.

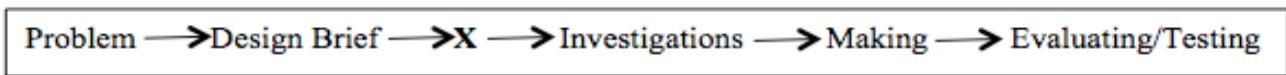
What does **X** refer to?



QUESTION 33

Manufacturers use the layer of **X** to prevent mainly _____ from coming into contact with the peanut butter paste as it could encourage the growth of bacteria and thus spoil the product.

For Questions 34 and 35, refer to the stages of Design Brief below.



QUESTION 34

You were given a design brief for preparing a nutritious meal for a pregnant teenager. One of the tasks is for you to study recipes that would appeal to a pregnant teenager that include calcium, iron, folate and protein foods.

Write the name of the stage of the Design Brief that this task would come under.

QUESTION 35

What is the name of stage **X**?

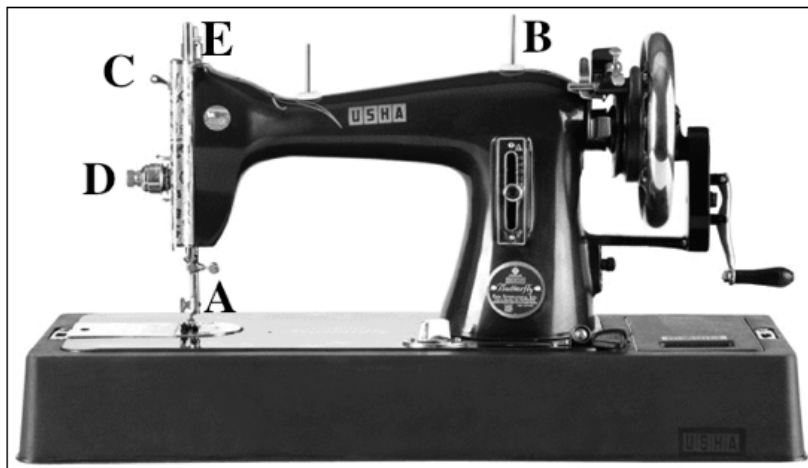
PART C: EXTENDED RESPONSE**5 MARKS**

For this question, write the answer in the space provided on the Answer Sheet.

QUESTION 36

Different models of sewing machines have slightly different features. Some parts may be in a slightly different position but the basic threading of a machine is always in the same order.

In which order would the upper thread of a sewing machine be correctly threaded? (Write the correct letter beside each number on your answer sheet).



END OF EXAMINATION

**LOWER SECONDARY SCHOOL EXAMINATION – 2016
DESIGN & TECHNOLOGY SUBJECT FIELD**

SUBJECT – HOME ECONOMICS – ANSWER SHEET



MARKER 1

YEAR		PROV.		SCHOOL			CAND No.		
1	6								
NAME									
SCHOOL									

PART A: (Questions 1 to 20)

Write the letter of your answer next to each question below.

1	
2	
3	
4	
5	

6	
7	
8	
9	
10	

11	
12	
13	
14	
15	

16	
17	
18	
19	
20	

PART B (Questions 21 to 35)

Write your answer next to each question below.

21	
22	Printing
23	
24	
25	

26	
27	
28	
29	
30	Vitamin

31	
32	
33	
34	
35	

PART C (Question 36)

Write your answer in the spaces below.

36	(i)	
	(ii)	
	(iii)	
	(iv)	
	(v)	



MARKER 2

DO NOT WRITE ON THIS PAGE

THIS PAGE MAY BE USED FOR ROUGH WORK

CAREFULLY TEAR ALONG THIS PERFORATION

THIS PAGE MAY BE USED FOR ROUGH WORK