



DEPARTMENT OF
EDUCATION

LOWER
SECONDARY
SCHOOL
CERTIFICATE
EXAMINATIONS

English

Friday
14 October 2016

Time allowed:
3 hours

Candidates are advised to
fully utilise the allocated
time

En

INSTRUCTIONS TO CANDIDATES:

(To be read out by the external invigilator before the start of the examination)

There are 50 questions in this paper. Attempt ALL questions even if you are not so sure of some of the answers.

The Examination is divided into three parts:

PART A: Multiple-Choice (Questions 1 to 25)

PART B: Short-Answer (Questions 26 to 35)

PART C: Cloze passage (Questions 36 to 50)

The Answer Sheet is part of the Examination Booklet. Take out the middle pages and remove the Answer Sheet by tearing along the perforation. You may use the blank sheet for rough work.

For each question in **PART A (Questions 1 to 25)** choose the best answer by writing the letter A or B or C or D in the space provided on the **ANSWER SHEET**.

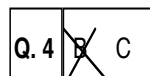
For each question in **PART B (Questions 26 to 35)** work out the answer and write the answer in the space provided on the **ANSWER SHEET**.

For the question in **PART C (Cloze passage (Questions 36-50))** write your answer in a short paragraph in the space provided on the **ANSWER SHEET**.

If you find a question very difficult, do not spend too much time thinking about it. Leave the question out and go on with the rest of the paper. If you have time in the end, return to the difficult questions and think about them more carefully.

Write your answers in BLUE or BLACK (pen or biro).

If you decide to change an answer, make your correction as shown below so that it is clearer to the markers what your final answer is. Do NOT use correction fluid on your answer sheet.



Hand in BOTH the Answer Sheet and the papers used for rough work at the end of the examination.

Extra time will NOT be given to complete the examination under any circumstances.

Penalty for cheating or assisting to cheat in national examinations is non-certification.

**DO NOT TURN OVER THIS PAGE AND DO NOT
WRITE UNTIL YOU ARE TOLD TO START.**

PART A: MULTIPLE CHOICE (QUESTIONS 1 to 25) 25 MARKS

Choose the **best** answer by writing **A** or **B** or **C** or **D** in the space provided on your Answer Sheet.

QUESTION 1

A third of the city _____ without power last week.

- A. was B. were C. have been D. were being

QUESTION 2

The late member was finally _____ to rest in his home village yesterday.

- A. layed B. lay C. lied D. laid

QUESTION 3

It is said that Chinese is the world's _____ language to master.

- A. hard B. harder C. hardest D. more harder

QUESTION 4

Because they did not want him to succeed, they made every effort to _____ him.

- A. pursue B. prevent C. flaunt D. thwart

QUESTION 5

John's coming to see you, _____ ?

- A. hasn't he B. won't he C. isn't he D. shouldn't he

QUESTION 6

The meeting was put off to Tuesday due to bad weather.

The phrase, put off means _____.

- A. cancelled B. deferred C. engaged D. arranged

QUESTION 7

I was nervous when I was first introduced to Morea but he offered me a drink and that broke

- A. the glass. B. new grounds. C. the barrier. D. the ice.

For questions 8 and 9, choose the best definition of the underline idiom.

QUESTION 8

He accused her of talking through her hat and refused to accept a word of what she said. She was talking _____.

- A. sense B. straight. C. nonsense. D. tough

QUESTION 9

It's a lovely house and very big but nobody uses it so it's a bit of a white elephant.

The house is very _____.

- A. beautiful and useful B. big and useful
C. cheap and useless D. expensive and useless

For questions 10 to 14, identify the part that has an error.

QUESTION 10

A B C D

Mary went /to the stationary/ shop to buy/a Dictionary.

QUESTION 11

A B C D

All accept three boys/ were selected/ to participate in/ the South Pacific Games.

QUESTION 12

A B C D

The bridge was washed /away by the flood /following a heavy downpour/ at the night.

QUESTION 13

A B C D

Mrs Kila has been working /in the Education Department /as a advisor /for six years.

QUESTION 14

A B C D

The students /were asked /why are they /still in the classroom.

For questions 15 to 17, select the restatement of each sentence.

QUESTION 15

The police allege that Simpson killed his wife and her lover last year.

- A. The police knew that Simpson killed his wife and her lover last year.
- B. The police found out that Simpson killed his wife and her lover last year.
- C. Simpson is alleged to have killed his wife and her lover last year.
- D. According to police investigation, Simpson killed his wife and her lover last year.

QUESTION 16

You cannot go into the restaurant without a jacket and tie.

- A. It's preferable to wear jacket and tie while you are going into that restaurant.
- B. Unless you wear a jacket and tie, you cannot go into that restaurant.
- C. If you want to go into that restaurant you have to wear a special tie and jacket.
- D. It would be appropriate to wear a jacket and tie when you go into that restaurant.

QUESTION 17

The only thing I forgot to put in my case was the camera.

- A. The only thing in my case was the camera.
- B. I put everything in my case including the camera.
- C. In my case I put only the camera, not the other things.
- D. I remembered to put everything in my case except the camera.

For questions 18 to 22, refer to the poem below

In Training

Dawn whispers
quietly through the sad willows,
stirring the leaves
that hang like a veil
over the glass ribbon
that decorates our valley.

A flurry of loose-limbed movement
flashes across the stillness,
and then is gone.
Like a velvet glove, the river
gently enfolds her,
with barely a ripple to mark
her passage.

Till she bursts through the surface-
an explosion of action and sound-
shattering the glass
into hundreds of shiny, dancing beads
that hold, in their myriad colours,
some of Morning's secrets.

QUESTION 18

The first line in stanza 1 is an example of;

- A. a metaphor B. onomatopoeia
C. personification D. simile

QUESTION 19

What does the poet compare with "that hang like a veil" in stanza 1?

- A. dawn B. willows
C. leaves D. ribbons

QUESTION 20

"the glass" in line 3 of stanza 3 refers to _____.

- A. poet B. shiny beads
C. colours D. water

QUESTION 21

The pronoun 'she' in line 1 of stanza 3 refers to the _____.

- A. poet B. trainer
C. swimmer D. spectator

QUESTION 22

Which of the following senses are being used by the poet to create images in the poem?

i.	sight	ii.	smell	iii.	taste	iv.	hearing	v.	touch
----	-------	-----	-------	------	-------	-----	---------	----	-------

- A. i, iv and v B. i, ii and v C. ii, iii and iv D. i, iii and v

For questions 23 to 25, refer to the passage below.

75th ANNIVERSARY OF INVESTING IN PNG

Oil Search Limited was incorporated in PNG on January 17, 1929 and began a systematic search for oil and gas in the country.

Being severely capital constrained, Oil Search successfully introduced a number of large companies to the exploration effort, and in 1938, the Australasian Petroleum Company (APC) was born, comprising a joint venture between Oil Search, Standard Vacuum New Jersey (Mobil) and Anglo Iranian (BP), each group holding one third equity.

APC was the dominant explorer in PNG for almost 40 years. Oil Search and APCs' exploration activities through the 30s, 40s and 50s were unsuccessful, with a number of small gas discoveries made form an investment equivalent to hundreds of millions of dollars.

Activities centred on PNG's southern lowlands, known as the Foreland. The prospective Highlands fold belt, which displayed large surface anticlines, was practically inaccessible for drilling operations.

Using heavy lift helicopters in the late 1950s and 1960s opened up the area to more intrepid geologists.

The primary exploring group then, led by BP and Gulf/Chevron were close to ceasing activities when, following a major gas discovery at Hides; oil was discovered at Kutubu in 1986. This led to the development of the Kutubu oilfield.

Oil Search Limited's election as operator in 2003, and the acquisition of Chevron Texaco's PNG assets, together with the merger with Orogen Minerals in 2002, has taken the company full circle to where it once again has the dominant role in all major fields and prospects in PNG. We are responsible for PNG's oil production and export.

Oil Search now has the financial strength and the asset base – not thought possible by the original promoters in 1929.

Oil Search is now embarking on what will be the biggest resource project ever to occur in PNG- the PNG Gas Project which comprises the piping of gas from the PNG Highlands over 2,000 kilometres to markets in Australia, and is also looking at other initiatives to commercialise its vast gas resources.

Paradise Inflight with Air Niugini Magazine Vol 4, 2006

QUESTION 23

What made the Highlands fault belt very difficult to drill?

- | | | | |
|----|----------------------|----|-------------------------------|
| A. | lack of road network | B. | its remoteness |
| C. | geological structure | D. | company's capital constraints |

QUESTION 24

What would have happened to BP and Gulf Chevron if Oil fields in the Hides were not discovered?

- A. The companies would venture into the highlands.
- B. Exploration would come to an end.
- C. The companies would continue their explorations.
- D. The companies would venture into other business activities.

QUESTION 25

According to the article, why did Oil Search introduce other companies during its early explorations?

- A. Other companies were already established in exploration work.
- B. Oil Search was new in the field of exploration.
- C. Oil Search did not have the financial capacity.
- D. Oil Search wanted to share its risks with other companies.

SHORT ANSWERS

For questions 26 to 30, refer to the following text.

In the 16th century, an age of great marine and terrestrial exploration, Ferdinand Magellan led the first expedition to sail around the world. As a young Portuguese noble, he served the king of Portugal, but he became involved in the quagmire at court and lost the king's favor. After he was dismissed from service by the king of Portugal, he offered to serve the future Emperor Charlse V of Spain.

A papal degree of 1493 had assigned all land in the New World west of 50 degree W longitude to Spain and all the land east of that line to Portugal, Magellan offered to prove that the east Indies fell under Spanish authority, on September 20, 1519, Magellan set sail from Spain with five ships. Than a year, one of these ships was exploring the topography of South America in search of a water route across the continent. This ship sank, but the remaining four ships searched along the South America. Finally they found the passage they sought near 50 degree S latitude. Magellan named the passage the Strait of All Saints, but today it is known as the Strait of Magellan. One ship deserted while in the passage and returned to Spain, so fewer sailors were privileged to gaze at that first panorama of the Pacific Ocean. Those who remained crossed the meridian now known as those long days at sea, many of Magellan's men died of starvation and disease.

QUESTION 26

Why is the 16th century often referred to as the age of discovery?

QUESTION 27

Why did the King of Portugal dismiss Magellan from his court?

QUESTION 28

About how many centuries ago did Magellan and his ships set sail?

QUESTION 29

What was it that Magellan wanted to prove by setting sail in five ships from Spain?

QUESTION 30

Where is the location of the Strait of Magellan?

For questions 31 to 35, change each of the words in brackets into its appropriate form in the context of the sentence.

QUESTION 31

She _____ (miracle) survived the plane crash that claimed many lives.

QUESTION 32

Civil unrest and _____ (disobey) led to the introduction of curfew for two months.

QUESTION 33

The commander expected total commitment and _____ (loyal) from his troops.

QUESTION 34

Mary took the doctor's _____ (prescribe) to the Chemist to buy the medicine.

QUESTION 35

If people _____ (honest) perform their duties, there would be less corruption.

For questions 36 to 50, fill in each blank with the most appropriate word.

Cloze Passage

Fill in the missing words of the passage below.

When we are young, we learn that tigers and sharks are dangerous animals. We might be scared of them because they are big and powerful. As we get older, **Q36** _____, we learn that sometimes the most dangerous animals are also the smallest animals. In **Q37** _____, the animal that kills the most people every year is one that you have probably killed yourself many times: the mosquito.

While it may seem that all mosquitoes are biters, this is not actually the case. Male mosquitoes eat plant nectar. On the other hand, **Q38** _____ mosquitoes feed on animal blood. They need this blood to live and produce eggs. When a female mosquito bites a human being, it transmits a small amount of saliva **Q39** _____ the blood. This saliva may or may not contain a deadly disease. The result of the bite can be as minor as an itchy bump or as serious as death.

Because a mosquito can bite many people in the course of **Q40** _____ life, it can carry disease from one person to another very easily. Two of the **Q41** _____ deadly diseases carried by mosquitoes are malaria and yellow fever. More than 700 million people become sick from these diseases every year. At least 2 million of **Q42** _____ people will die from these diseases.

Many scientists are working on safer and better ways to kill mosquitoes, but **Q43** _____ far, there is no sure way to protect everyone in the world from their deadly bites. Mosquito nets can be placed over beds to protect people against being **Q44** _____. These nets help people stay safe at night, but they do not kill any mosquitoes. Mosquitoes have many natural **Q45** _____ like bats, birds, dragonflies, and certain kinds of fish. Bringing more of **Q46** _____ animals into places where mosquitoes live might help to cut **Q47** _____ the amount of mosquitoes in that area. This is a natural solution, but it does not always work well. Mosquitoes can also be killed by poisons or sprays. Even **Q48** _____ these sprays kill mosquitoes; they may also harm other plants or animals.

Although mosquitoes may not seem as scary as larger and more powerful animals, they are far **Q49** _____ dangerous to human beings. But things are changing. It is highly likely that one day, scientists will find a way to keep everyone safe **Q50** _____ mosquitoes and the disease they carry.

END OF EXAMINATION

LOWER SECONDARY
SCHOOL CERTIFICATE EXAMINATION – 2016
ENGLISH – ANSWER SHEET

--

MARKER 1

YEAR		PROV.		SCHOOL			CAND No.		
1	6								
NAME									
SCHOOL									

PART A: (QUESTIONS 1 TO 25)

Write the letter of your answer next to each question number below.

1	
2	
3	
4	
5	

6	
7	
8	
9	
10	

11	
12	
13	
14	
15	

16	
17	
18	
19	
20	

21	
22	
23	
24	
25	

PART B (QUESTIONS 26 TO 35)

Write your answer next to each question number below.

26			31	
27			32	
28			33	
29			34	
30			35	

PART C (QUESTIONS 36 TO 50)

Write your answer next to each question number below.

36	
37	
38	
39	
40	

41	
42	
43	
44	
45	

46	
47	
48	
49	
50	

--

MARKER 2

DO NOT WRITE ON THIS PAGE

YOU MAY DO YOUR ROUGH WORK ON THIS PAGE

CAREFULLY TEAR ALONG THIS PERFORATION

YOU MAY DO YOUR ROUGH WORK ON THIS PAGE