

DEPARTMENT OF
EDUCATION

LOWER
SECONDARY
SCHOOL
CERTIFICATE
EXAMINATION
(LSSCE)

ARTS

Tuesday

11th October 2016

Time allowed:
1 hour 30 minutes

12:30 pm – 2:00 pm

Candidates are advised to
fully use the time
allocated



INSTRUCTIONS TO CANDIDATES:

(To be read out by the external invigilator before the start of the examination)

There are **36** questions in this paper worth **40** marks. Attempt **ALL** questions even if you are not so sure of some of the answers.

The Examination is divided into three parts:

PART A: Multiple Choice (Questions 1 to 20)

PART B: Short Answer (Questions 21 to 35)

PART C: Extended Response (Question 36)

The Answer Sheet is part of the Examination Booklet. Take out the middle pages and remove the Answer Sheet by tearing along the perforation. You may use the blank sheet for rough work.

Write your candidate number, name and school name in the space given on the **ANSWER SHEET**.

For each question in **PART A**, choose the correct answer by writing the letter A, B, C or D in the space provided on the **ANSWER SHEET**.

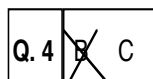
For each question in **PART B** and **PART C**, work out the answer and write the answer in the space provided on the **ANSWER SHEET**.

If you find a question very difficult, do not spend too much time thinking about it. Skip the question and go on with the rest of the paper. If you have time in the end, return to the difficult questions and think about them more carefully.

Write your answers in **BLUE** or **BLACK** ink (pen or biro).

If you decide to change an answer, make your correction as shown below so that it is clear to the markers what your final answer is. Do **NOT** use correction fluid on your answer sheet.

Example



Hand in **BOTH** the Answer Sheet and the papers used for rough work at the end of the examination.

Extra time will NOT be allowed to complete the examination under any circumstances.

Penalty for cheating or assisting to cheat in national examinations is non-certification.

**DO NOT TURN OVER THIS PAGE AND DO NOT
WRITE UNTIL YOU ARE TOLD TO START.**

PART A: MULTIPLE CHOICE QUESTIONS**(QUESTIONS 1 to 20)****20 MARKS**

For each question, choose the correct answer and write A, B, C or D in the space provided on the ANSWER SHEET.

QUESTION 1

Which of these is **not** a voice distorter?

- A. Bamboo Tube
B. Gourd
C. Bull-roarer
D. Coconut Shell

QUESTION 2

Which material is appropriate to design a permanent mosaic?

- A. Paper
B. Tar
C. Brush
D. Scissor

QUESTION 3

The lines that are written above or below the five main lines of a staff are called

- A. bar lines.
B. double lines.
C. ledger lines.
D. end lines.

QUESTION 4

Energy is one of the elements of dance. It refers to:

- A. What the body is doing.
B. Where the body is moving.
C. How fast the body moves.
D. How the body is moving.

QUESTION 5

Natural space is classified under

- A. dance.
B. drama.
C. visual arts.
D. music.

QUESTION 6

The term “design” is used a lot in Science, Technology and Arts.

What does design mean?

- A. Draw a picture
B. Create Artwork
C. Plan and Sketch
D. Draw and Sketch

QUESTION 7

Which of these elements of music refers to the “relative highness and lowness of sound”?

- A. Volume
B. Pitch
C. Harmony
D. Tempo

QUESTION 8

This picture is an example of a _____ dimensional artwork.

- A. two
B. three
C. four
D. five

QUESTION 9

The term _____ refers to the simplified version of natural shape.

- A. geometric B. abstracted C. natural D. shape

QUESTION 10

In an arts lesson, the students were asked to create their own dance patterns of a traditional dance from their area.

What term is described in the above statement?

- A. Choreograph B. Practice C. Rehearse D. Present

QUESTION 11

On the five lines of the treble clef, what note is located on the bottom line?

- A. C B. D C. E D. F

For question 12 and 13, refer to this play script below.

ACT 3 SCENE 4**Storm Scene**

[The Fairies return and stage a spectacular storm, emptying the stage to the sound of Mendelssohn's Wedding March]

JIM: Put the clothes in the car

GWEN: Take the stove!

GWEN: You'll get struck by lightening

JIM: Stay in the car

GWEN: Where is my purse?

JIM: Stay in the open

GWEN: The boat will be washed away.

JIM: Stay away from the trees

[JIM, GWEN and MEG are driven out by the Fairies who wreck havoc with noise, light and frenzied activity]

QUESTION 12

The two line in bracket at the beginning and ending of the play are the

- A. stage's direction. B. narrator's direction.
C. character's speech. D. story line.

QUESTION 13

Jim and Gwen are the

- A. characters. B. narrators. C. play makers. D. directors.

QUESTION 14

Painim Wok, Barike and Jokema are examples of PNG _____ bands.

- A. rock B. contemporary C. jazz D. folk

QUESTION 15

In graphic design the distance around or between things is know as

- A. space. B. size. C. alignment D. balance.

PART B: SHORT ANSWERS**(QUESTIONS 21 to 35)****15 MARKS**

For each question, work out the answer and write the answer in the space provided on the ANSWER SHEET.

For Question 21 to 24, refer to the information below.

These are examples of traditional dances in PNG.

Tapioka, Waipa, Tumbuan, Daik.

Correctly list them under these regions.

QUESTION 21

Momase Region?

QUESTION 22

New Guinea Islands Region?

QUESTION 23

Highlands Region?

QUESTION 24

Southern Region?

QUESTION 25

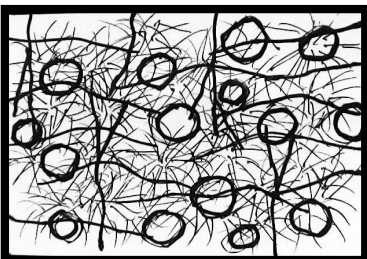
A note that is four beat long is called a _____.

QUESTION 26

What type of drama is performed without the use of dialogue?

For questions 27 and 28, refer to the picture and information below.

An elementary school child did this drawing. The circular objects represent rocks, the horizontal lines represent mountains and the vertical lines represent shrub branches. The thin curved lines represent grass.

**QUESTION 27**

Name the two elements of art emphasized in this drawing.

QUESTION 28

What would a professional artist term this child's work as?

QUESTION 29

From the mid 1950s to the current time, this genre has been one of the most popular forms of music in the western world. The heart of this genre is rhythm.

Name the genre that is described above.

QUESTION 30

What do corporate companies, schools and other organisations use, to promote their organisations?
It is usually design by graphics artists.

QUESTION 31

A person that creates and teaches dance movement is known as the _____.

QUESTION 32

Name the three notes on the keyboard one has to press in order to sound the C major chord.

QUESTION 33

What is the name material is applied on a carving to protect and beautify it?

QUESTION 34

This type of music is not part of the popular/modern mainstream of music. It originated outside the cultural sphere of Western Europe and the English speaking nations.

Name this type of music.

QUESTION 35

What is the steady underlying pulse in music called?

PART C: EXTENDED RESPONSE**5 MARKS**

On the blank treble clef staff provided on your answer sheet, correctly write in the following notes as described in the table.

QUESTION 36

Write correctly on your answer sheet the following notes as described.

No.	Beat Type	Note Name
I.	Crotchet	A
II.	Minim	D
III.	Semibreve	C
IV.	Semiquaver	B
V.	Quaver	G

All notes should be correctly plotted in their **correct places** and in their **correct symbol** on the staff.

END OF EXAMINATION

**LOWER SECONDARY SCHOOL CERTIFICATE
EXAMINATION – 2016**

ARTS – ANSWER SHEET



MARKER 1

YEAR		PROV.		SCHOOL			CAND No.		
1	6								
NAME									
SCHOOL									

PART A: (QUESTIONS 1 to 20)

Write the letter of your answer next to each question below.

1	
2	
3	
4	
5	

6	
7	
8	
9	
10	

11	
12	
13	
14	
15	

16	
17	
18	
19	
20	

PART B: (QUESTIONS 21 to 35)

Write your answer next to each question below.

21	
22	
23	
24	
25	

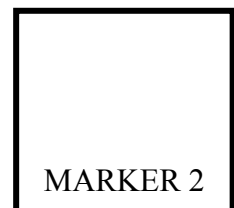
26	
27	
28	
29	
30	

31	
32	
33	
34	
35	

PART C: (QUESTION 36)

Write your answer in the staff provided below.

I	II	III	IV	V



MARKER 2

DO NOT WRITE ON THIS PAGE

CAREFULLY TEAR ALONG THIS PERFORATION

YOU MAY DO YOUR ROUGH WORK ON THIS PAGE