



DEPARTMENT OF
EDUCATION

LOWER SECONDARY
SCHOOL CERTIFICATE
EXAMINATIONS
(LSSCE)

PERSONAL
DEVELOPMENT

Monday

12 October 2015

Time allowed:

3 hours

(12:30 pm – 3:30 pm)

Candidates are advised to
fully utilize the time allocated

PD

INSTRUCTIONS TO CANDIDATES:

(To be read out by the external invigilator before the start of the examination)

There are **46** questions in this paper worth **50** marks. Attempt **ALL** questions even if you are not so sure of some of the answers.

The Examination is divided into three parts:

PART A: Multiple-Choice (Questions 1 to 25)

PART B: Short-Answer (Questions 26 to 45)

PART C: Extended Response (Question 46)

The Answer Sheet is part of the Examination Booklet. Take out the middle pages and remove the Answer Sheet by tearing along the perforation. You may use the blank sheet for rough work.

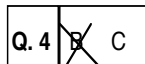
For each question in **PART A** choose the correct answer and write the letter A, B, C or D in the space provided on the **ANSWER SHEET**.

For each question in **PART B and PART C** work out the answer and write the answer in the space provided on the **ANSWER SHEET**.

If you find a question very difficult, do not spend too much time thinking about it. Leave the question out and go on with the rest of the paper. If you have time in the end, return to the difficult questions and think about them more carefully.

Write your answers in **BLUE** or **BLACK** ink (pen or biro).

If you decide to change an answer, make your correction as shown below so that it is clear to the markers what your final answer is. Do **NOT** use **correction fluid** on your answer sheet.



Hand in **BOTH** the Answer Sheet and the papers used for rough work at the end of the examination.

Extra time will NOT be allowed to complete the examination under any circumstances.

The penalty for cheating or assisting others to cheat in national examinations is non-certification.

**DO NOT TURN OVER THIS PAGE AND DO NOT WRITE UNTIL
YOU ARE TOLD TO START.**

PART A: MULTIPLE CHOICE (QUESTIONS 1 to 25) 25 MARKS

For each question, choose the correct answer and write the letter A, B, C or D in the space provided on the ANSWER SHEET.

QUESTION 1

What is the common advantage of a clean home?

- A. Prevents unwanted diseases. B. Avoids only mosquitoes.
C. Impresses the health inspector. D. Earns rewards from provincial government.

For Questions 2 and 3 refer to the information below.

The following are steps in problem solving.

- I. Identify the problem.
II. Describe the possible solutions.
III. Evaluate your ideas.
IV. Act out your plan.
V. Learn from your experiences.

QUESTION 2

What is most likely to happen after step V?

- A. No more problems are likely to happen.
B. You are ready to cause another problem.
C. You are likely to deal with another problem.
D. Your family will not face any problem.

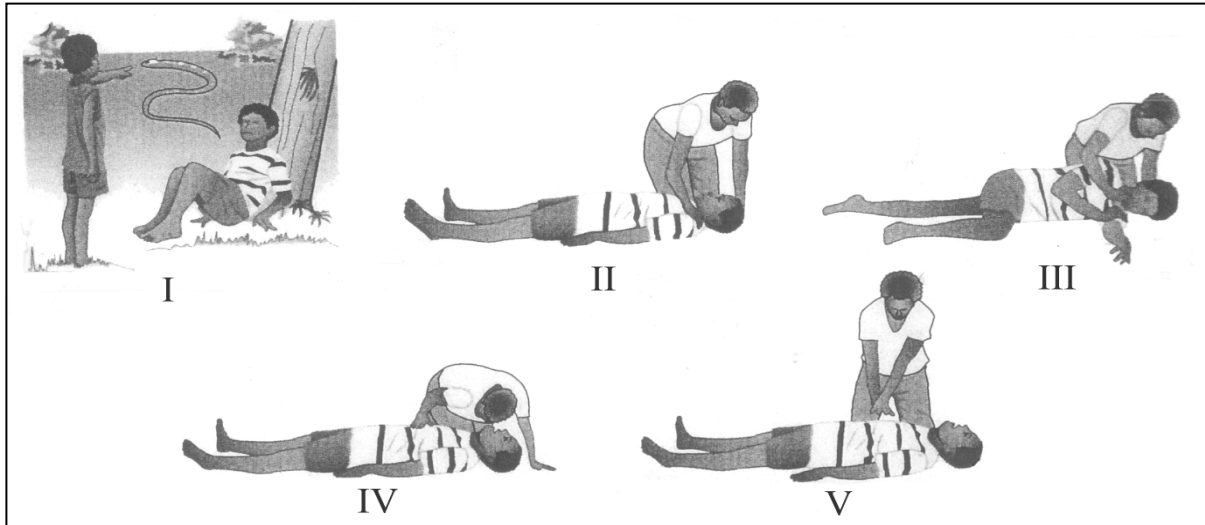
QUESTION 3

Step II in the method above gives you the advantage to predict the possible _____.

- A. problems B. situations C. consequences D. experiences

For Questions 4 and 5, refer to the information below.

DRABC is a first-aid-approach that is given to an injured person who is due for professional medical care.



QUESTION 4

'A' in DRABC represents 'Airways', where the patient is placed on his side; head tilted back and mouth opened to clear foreign objects in the air passages.

Which diagram above corresponds to clearing of the Airways?

- A. II B. III C. IV D. V

QUESTION 5

The 'C' in *DRABC* stands for Circulation, which means _____.

- A. place patient on his side, tilt head back to clear the airways
 B. look, listen and feel for breathing of the patient
 C. check for danger to you, others and the patient
 D. if pulse is not present, CPR needs to be administered

QUESTION 6

Which of the alternatives below has been a peaceful approach to solve conflicts in our societies?

- A. Bride price payments B. Tribal warfare
 C. Through consensus D. By census

For Questions 7 and 8, refer to the activities of people that give their identity.

I



II



III



IV



QUESTION 7

Which group of people has the identity in label I?

The _____ Province in Papua New Guinea.

- A. Mekeo dancers of Central
- B. Asaro Mud-man of Eastern Highlands
- C. Tapioca dancers of Trobriand in Milne Bay
- D. Huli wig-men of Hela

QUESTION 8

What aspect of identity is represented in diagrams I - IV?

- A. Family
- B. Culture
- C. Kinship
- D. Totem

QUESTION 9

An approach used in both traditional and modern cultures to enjoy sexual intercourse and avoid unwanted pregnancy is to _____.

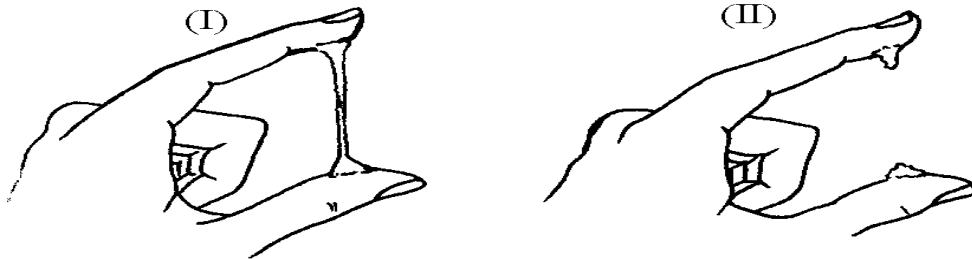
- A. have normal sexual intercourse B. avoid sexual intercourse
C. use condoms during sex D. use ovulation method

QUESTION 10

The two main functions of the male urethra are to remove urine and to _____ cells.

- A. transport egg B. produce sperm
C. transport sperm D. produce bacteria

For question 11, study the mucus diagram below.

**QUESTION 11**

What do these mucus diagrams give information about?

- A. Difficulties in pregnancy. B. Delays in conception.
C. Dangers in sexual diseases. D. Processes in ovulation.

QUESTION 12

Which statement best describes the definition of values?

- A. Importance or usefulness of something to somebody.
B. Your inherited traits and characteristics.
C. Goals and aims of an individual.
D. Goods and services that satisfies an individual.

QUESTION 13

Which of the following is the direct consequence of domination and discrimination?

- A. Respect B. Harmony C. Oppression D. Equality.

QUESTION 14

The foods below that would provide a balanced meal are _____.

- A. Peanuts, pawpaw and taro. B. Chicken, carrot and fish.
 C. Fish, bread and sweet potato. D. Cassava, cooking banana and mango.

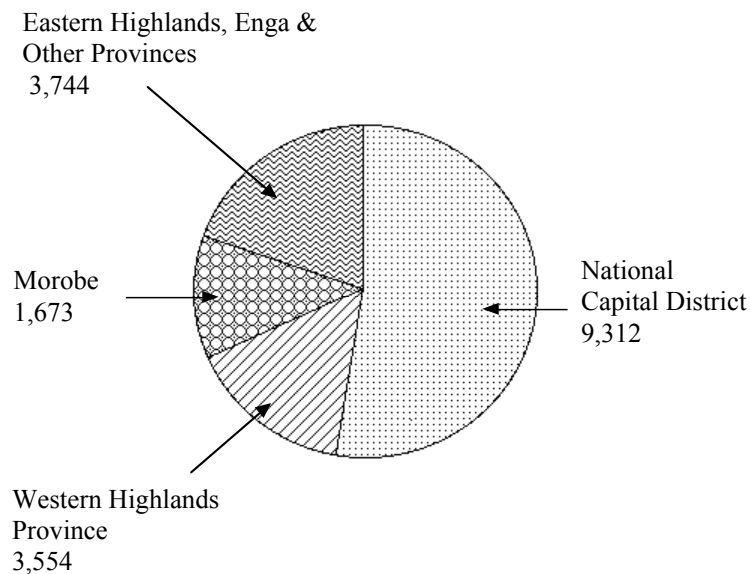
QUESTION 15

Which alternative has **only** the characteristics of a negative role model?

- A. Respectful, hardworking, lustful. B. Respectful, demanding, lazy.
 C. Demanding, proud, hardworking. D. Demanding, lustful, proud.

For Questions 16 and 17 refer to the diagram below.

**HIV/AIDS infections reported in PNG by
 province of detection (1987 - 2006)**

**QUESTION 16**

What is the approximate percentage of reported HIV/AIDS infections in the National Capital District?

- A. 40% B. 45% C. 50% D. 65%

QUESTION 17

Between 1987 and 2006, the total population of PNG infected with HIV/AIDS was _____.

- A. 18,283 B. 14,971 C. 11,866 D. 9,312

QUESTION 18

Which of the alternatives below is **not** an example of signs and symptoms of sexually transmitted disease?

- A. Discomfort when urinating. B. Lumps on genitals.
C. Genital itching. D. Sexual masturbation.

QUESTION 19

Which of the following portrays '*positive pressure*' in the process of socialization and interaction with peers?

- A. Peers encourage and help to make wise decisions or develop new skills.
B. Assistance is offered to win the favor of others in social competitions.
C. Peers discourage participation in social activities benefiting to the community.
D. You work under pressure to achieve set goals and objectives.

QUESTION 20

Certain flexibility exercises maintain mobility and keep the joints healthy, mobile and free from stiffness.

Typical bone

The location where two bones meet is called _____.

- A. ligament B. joint
C. ankle D. muscles

QUESTION 21

Listed are the different basic values of families for their children:

- | | | | |
|-----------|--------------|--------------------|---------------|
| i. threat | iii. care | v. security | vii. nepotism |
| ii. love | iv. workload | vi. discouragement | viii. advice |

Which of the alternatives indicate choices of good family values?

- A. i, ii, iii, iv B. i, ii, v, viii C. ii, iv, vi, viii D. ii, iii, v, viii

For Questions 22 and 23, refer to the letters below.

Dear Chris,

I hate to be myself because I really feel lonely. Some times even when I am at party, I feel lonely too. Why do I feel this way? I want to be popular and I want people to like me.

Mel

Dear Mel,

You are not alone in feeling lonely today. One research study showed that over 50 percent of the people had felt severe loneliness in the previous weeks.

The first step in overcoming loneliness and a feeling of unpopularity is to work on improving your self-concept. You will feel better about yourself if you work on improving a particular skill or interest. Volunteer sometime to a charitable organization or try a new experience such as joining a dance class or an outer club. New activities will also bring you in contact with new people who could become your friends.

Chris

QUESTION 22

Chris suggested that Mel felt lonely and unpopular because she _____.

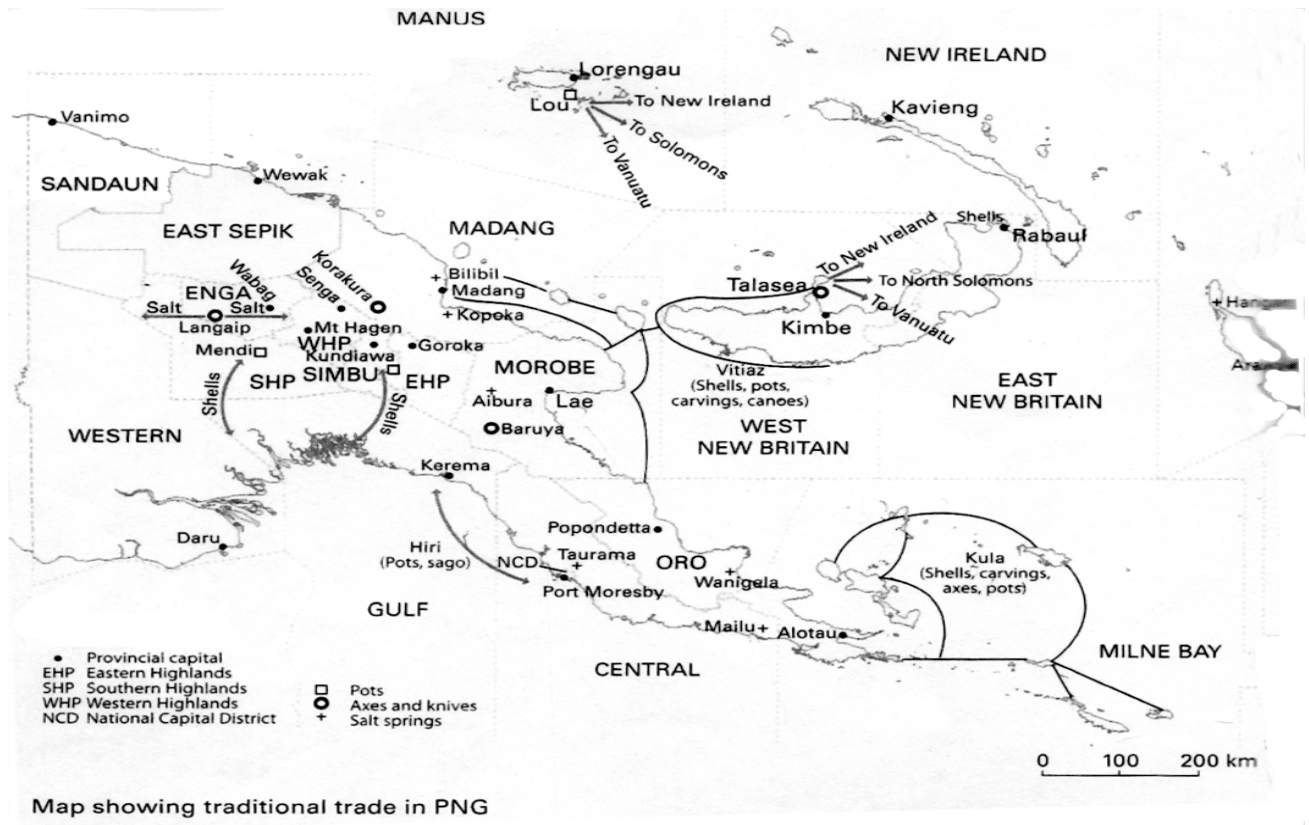
- | | |
|-------------------------|-------------------|
| A. was sick | B. had no friends |
| C. had low self-concept | D. was miserable |

QUESTION 23

Which of these organisations should Chris recommend Mel to join to improve her self-concept?

- | | |
|--------------------------|-----------------------------|
| A. Assist PNG Red Cross. | B. Join the PNGDF. |
| C. Work with PNG Power. | D. Work in the LNG project. |

For Question 24 and 25, refer to the Trade Routes



QUESTION 24

Which list has items only exchanged between places involved in the Kula Trade?

- A. Pots, sago, and shell.
- B. Shells, pots and carvings.
- C. Carvings, populations and sago.
- D. Axes, shells and sago.

QUESTION 25

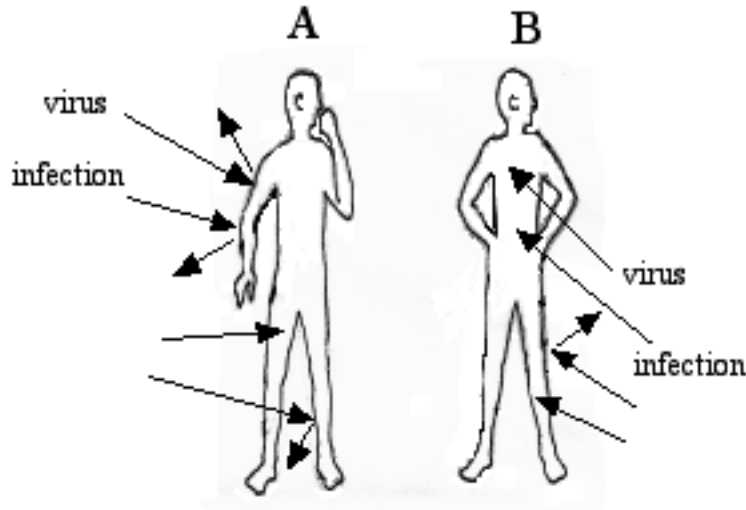
Which coastal province would have traded shells with traders from Simbu Province in the Highlands?

- A. Western
- B. Gulf
- C. Central
- D. Madang

PART B: SHORT ANSWERS (QUESTIONS 26 to 45) 20 MARKS

For each question, write the correct answer in the space provided on the ANSWER SHEET.

For Questions 26 to 28, refer to the diagram on Human Immune Systems.

**QUESTION 26**

The initial 'S' in AIDS refers to the signs and symptoms in an AIDS patient. What does the letter 'S' stand for?

QUESTION 27

Which diagram is most likely to be infected by the opportunistic diseases? _____

QUESTION 28

The condition that results from the Immune System being completely broken down is called _____.

QUESTION 29

The National Flag, Currency, Bird of Paradise and House of Parliament of PNG are symbols that express our national _____.

QUESTION 30

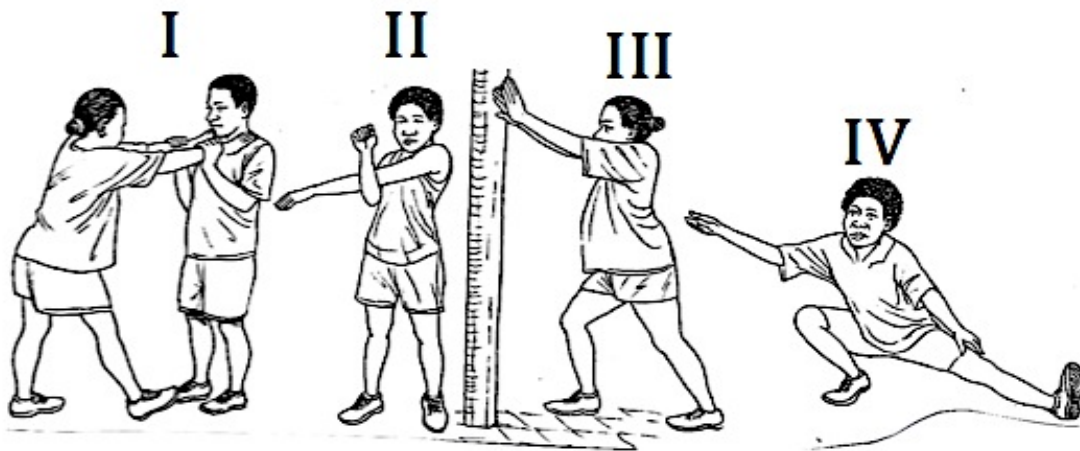
What is the name of the highest court of appeal in Papua New Guinea? _____ Court.

QUESTION 31

Name the type of marriage where a man is married to more than one wife. _____

For Question 32 and 33 refer to the information below.

Stretching small and large muscles



Stretching warms up muscles, improves blood circulation and improves sport performances.

QUESTION 32

Which of the diagrams I - IV shows the stretching of the back muscles? _____

QUESTION 33

Which diagram shows the stretching of the hamstring only? _____

For Questions 34 and 35 refer to the information below.

Here are the steps for egg to implant in the womb.

- | | |
|-----------------------------------------|-----------------------------------------------------|
| i. Egg implants in the walls of uterus. | ii. Sperm fertilizes egg. |
| iii. Ovary releases egg. | iv. Womb protects and amniotic sac supports growth. |

QUESTION 34

Which step represents ovulation stage? _____

QUESTION 35

Which step occurs in the fallopian tube? _____

For Questions 36 to 38, refer to the information in the table

Stages of egg in the female

Birth	Female baby ovary contains between 250,000 and 500,000 potential eggs.
Puberty	Between 100,000 and 200,000 potential eggs survive but are in the early stage of development. Most other potential eggs have disintegrated.
Menopause	Menstruation abruptly ceases or may take between ages 45-50. Ovaries gradually cease to functions

QUESTION 36

The number of eggs that would have been broken down and eliminated by the female body at puberty would be 150, 000 to _____.

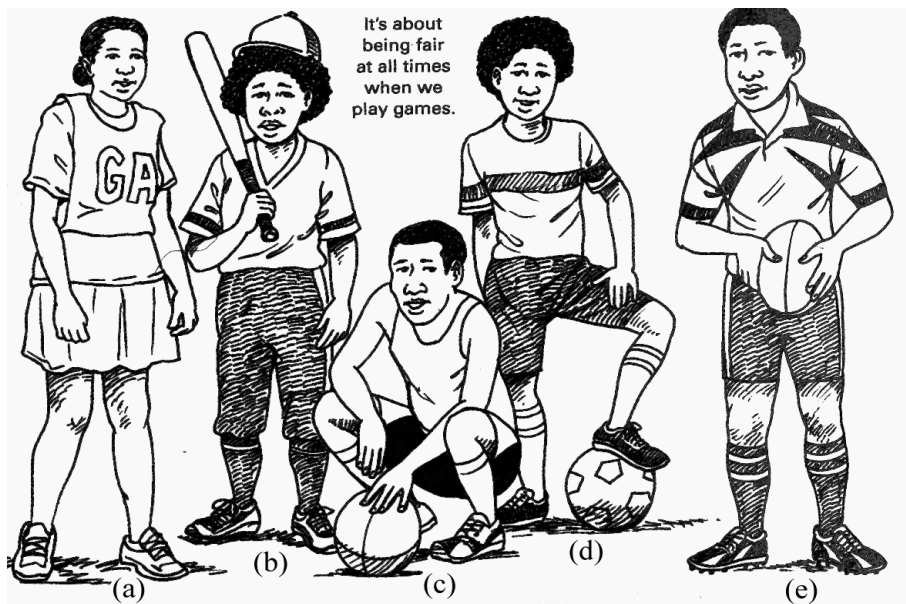
QUESTION 37

At what stage does menstruation start in females? _____

QUESTION 38

Which reproductive organs stop functioning at ages 45 to 50? _____

For Questions 39 – 41 refer to the picture below.



QUESTION 39

Name the sport played by the person labelled (a). _____

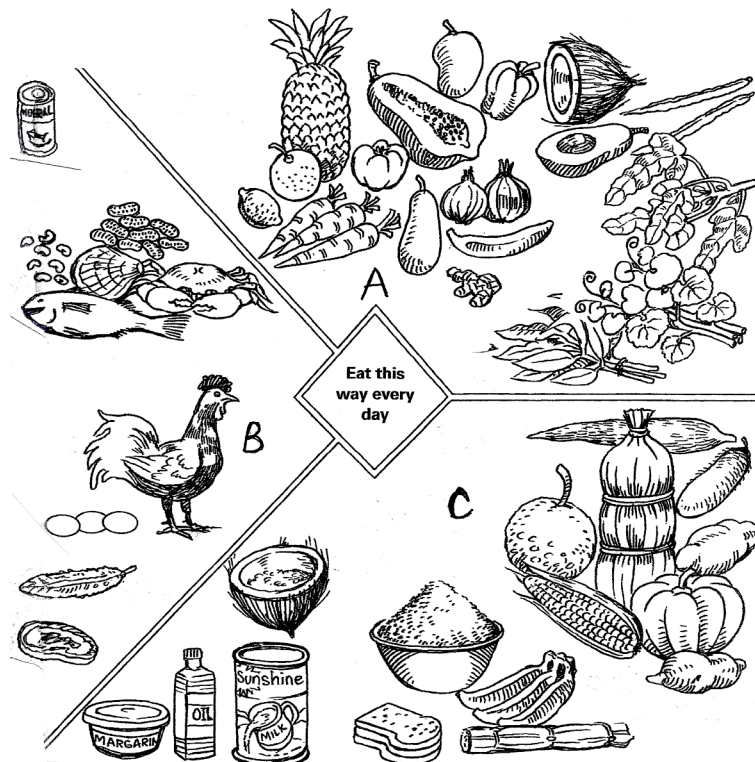
QUESTION 40

How many players are required in a team to play the sport represented by (d)? _____

QUESTION 41

Players use their hands to play sports labelled (a), (b), (c) and (e). Which one of them is mostly a female oriented sport? _____

For Questions 42 - 44, refer to the diagram below.



QUESTION 42

Which of the above food groups labelled A, B or C is high in Carbohydrates? _____

QUESTION 43

Which food group is rich in vitamins and minerals? _____

QUESTION 44

What is the main nutrient in foods found in group B? _____

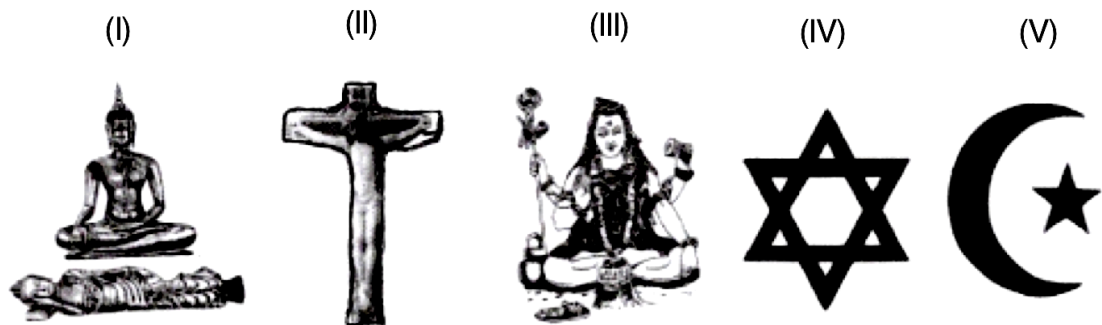
QUESTION 45

The person who investigates complaints against the government by individuals or organisations is called an _____.

PART C:**EXTENDED RESPONSE****5 MARKS****QUESTION 46**

The following symbols represent the five major religions of the world.

Major Religions of the world
(Judaism, Christianity, Islam, Hinduism and Buddhism.)

Corresponding Symbols

Write the correct name of the religion for the corresponding symbol in the space next to the Roman numerals on your answer sheet.

Symbols	Name of Religions
I	_____
II	_____
III	_____
IV	_____
V	_____

END OF EXAMINATION



MARKER 1

YEAR		PROV.		SCHOOL			CAND No.		
1	5								
NAME									
SCHOOL									

PART A: (Questions 1 to 25)

Write the letter of your answer next to each question below.

1		6		11		16		21	
2		7		12		17		22	
3		8		13		18		23	
4		9		14		19		24	
5		10		15		20		25	

PART B (Questions 26 to 45)

Write your answer next to each question below.

26		31		36	
27		32		37	
28		33		38	
29		34		39	
30		35		40	

PART C (Questions 46 to 50)

Write your answer next to each question below.

41		46	I		MARKER 2
42			II		
43			III		
44			IV		
45			V		

DO NOT WRITE ON THIS PAGE

YOU MAY DO YOUR ROUGH WORK ON THIS PAGE

CAREFULLY TEAR ALONG THIS PERFORATION

YOU MAY DO YOUR ROUGH WORK ON THIS PAGE