

DEPARTMENT OF
EDUCATION

LOWER
SECONDARY
SCHOOL
CERTIFICATE
EXAMINATION
(LSSCE)

ARTS

Tuesday

13th October 2015

Time allowed:
1 hour 30 minutes

12:30 pm – 2:00 pm

Candidates are advised to
fully use the time
allocated



INSTRUCTIONS TO CANDIDATES:

(To be read out by the external invigilator before the start of the examination)

There are **36** questions in this paper worth **40** marks. Attempt **ALL** questions even if you are not so sure of some of the answers.

The Examination is divided into three parts:

PART A: Multiple Choice (Questions 1 to 20)

PART B: Short Answer (Questions 21 to 35)

PART C: Extended Response (Question 36)

The Answer Sheet is part of the Examination Booklet. Take out the middle pages and remove the Answer Sheet by tearing along the perforation. You may use the blank sheet for rough work.

Write your candidate number, name and school name in the space given on the **ANSWER SHEET**.

For each question in **PART A**, choose the correct answer by writing the letter A, B, C or D in the space provided on the **ANSWER SHEET**.

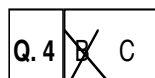
For each question in **PART B** and **PART C**, work out the answer and write the answer in the space provided on the **ANSWER SHEET**.

If you find a question very difficult, do not spend too much time thinking about it. Skip the question and go on with the rest of the paper. If you have time in the end, return to the difficult questions and think about them more carefully.

Write your answers in **BLUE** or **BLACK** ink (pen or biro).

If you decide to change an answer, make your correction as shown below so that it is clear to the markers what your final answer is. Do **NOT** use correction fluid on your answer sheet.

Example



Hand in **BOTH** the Answer Sheet and the papers used for rough work at the end of the examination.

Extra time will NOT be allowed to complete the examination under any circumstances.

Penalty for cheating or assisting to cheat in national examinations is non-certification.

**DO NOT TURN OVER THIS PAGE AND DO NOT
WRITE UNTIL YOU ARE TOLD TO START.**

PART A: MULTIPLE CHOICE QUESTIONS**(QUESTIONS 1 to 20)****20 MARKS**

For each question, choose the correct answer and write **A, B, C or D** in the space provided on the **ANSWER SHEET**.

QUESTION 1

The type of artwork created by the process of sticking/gluing is called

- A. mono-print. B. mosaic. C. collage D. poster.

QUESTION 2

Which Momase province is well known for its carving?

- A. Morobe B. West Sepik
C. East Sepik D. Madang

QUESTION 3

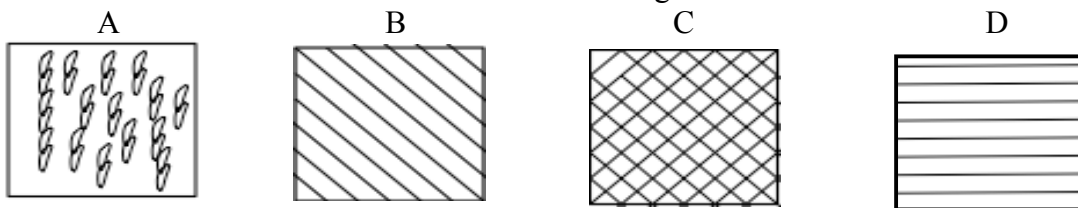
This principle of design creates differences in tone, colours and texture and is used to draw attention.

Which of these principles does the statement refer to?

- A. Contrast B. Harmony
C. Colour D. Value

QUESTION 4

What pattern shown below indicates the use of hatch shading?

**QUESTION 5**

Read the statement and answer the question.

“Artists make up something on the spur of moment and developing it without any proper planning or preparation.”

What word would sum up the above statement?

- A. Composition B. Improvisation
C. Choreography D. Transposition

QUESTION 6

A popular music genre combining jazz, gospel and blues influences is known as

- A. Hard Rock. B. Country.
C. R&B. D. Pop.

QUESTION 7

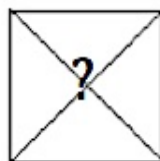
Study the patterns shown below.



Square 1



Square 2

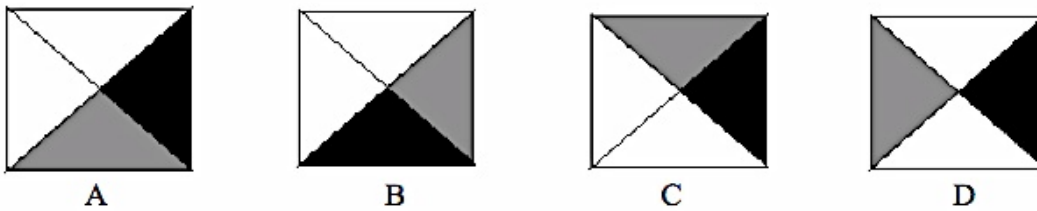


Square 3

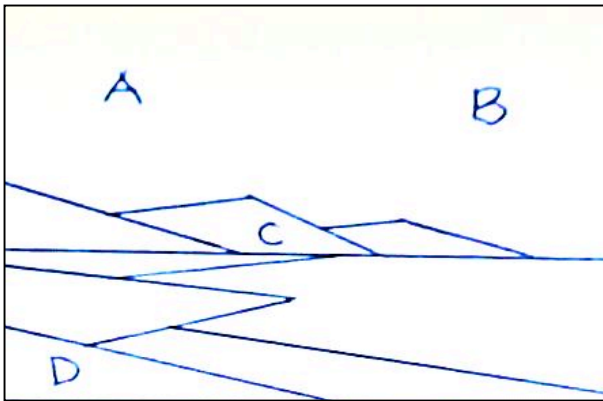


Square 4

Which of these would fit into Square 3 to complete the orderly movement of pattern?



For question 8 and 9, refer to the illustration below.



QUESTION 8

The illustration is of a landscape drawn using common basic geometric shape, however it is not balanced.

Where on the illustration marked A, B, C or D will an object be drawn to balance out the composition?

QUESTION 9

What geometric shape has been widely used to create this drawing?

- | | |
|--------------|--------------|
| A. Rectangle | B. Triangle |
| C. Square | D. Trapezium |

QUESTION 10

In big events such as the South Pacific Festival of Arts and Culture, nations showcase their traditional cultural practices to the public. This creates a sense of belonging to a place.

What does this imply?

- | | |
|--|-----------------------------------|
| A. It shows how illiterate people are. | B. It shows a country's identity. |
| C. It is for fundraising activity. | D. It is a cultural competition. |

QUESTION 11

The best way to plan the construction of a three dimensional art is through

- | | |
|----------------------------------|------------------------------------|
| A. planning and creating models. | B. drawing and painting a picture. |
| C. brainstorming and thinking. | D. collecting of materials. |

QUESTION 12

There are two types of methods used in creating a 3-dimensional artwork.

What are these methods?

- | | |
|-----------------------------|-------------------------|
| A. Carving and Construction | B. Carving and Painting |
| C. Construction and Design | D. Stone and Wood |

QUESTION 13

On a written piece of music, where would you find a double bar line?

- | | |
|-----------------------------|------------------------------|
| A. At the start of a music | B. At the end of a music |
| C. In the middle of a music | D. Before the end of a music |

QUESTION 14

A pole that depicts traditional folklore was removed from the National Parliament. It represented PNG traditional lifestyle.

What category will the pole be placed under?

- A. Carving B. Painting C. Legend D. Drawing

QUESTION 15

Which of the following best defines the technique of carving?

- A. Attaching together of materials to create an artwork.
B. Material is drawn to create carving.
C. Material is built to form a carving.
D. Material is taken out from the original material.

QUESTION 16

Which principle of art can cause a pattern, suggest movement or create a time sequence?

- A. Proportion B. Shade C. Tint D. Repetition

QUESTION 17

In expressive movement what would the use of energy mean?

- A. How an actor project his voice backstage.
B. How the body is moving.
C. When the body is moving.
D. The pressure on the performer.

QUESTION 18

This genre of music emerged as a defined musical style in the 1970s, having its roots in hard rock bands. Between 1967 and 1974, it mixed blues, jazz and rock to create a hybrid with heavy sound, characterized by the use of highly amplified distortion.

What is this style of music called?

- A. Heavy Metal B. Rock n Roll C. Punk D. Jazz

QUESTION 19

Shapes assist in _____ elements.

- A. organizing B. breaking
C. building D. drawing

QUESTION 20

In visual art, which element of art does an enclosed line create?

- A. Shape B. Line Drawing C. Colour D. Line

PART B: SHORT ANSWERS**(QUESTIONS 21 to 35)****15 MARKS**

For each question, work out the answer and write the answer in the space provided on the ANSWER SHEET.

QUESTION 21**Elements of Dance***Body, Energy, Space and Time*

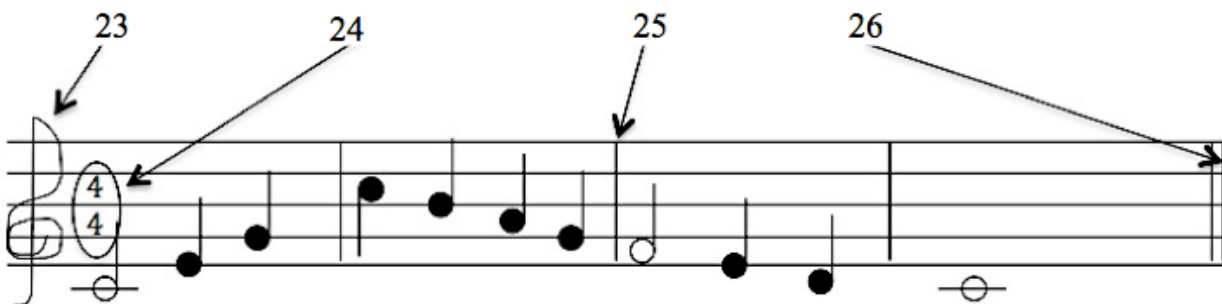
Which dance element would the use of hand, leg and face be categorized under?

QUESTION 22

What is the common material used for construction of pottery in PNG traditional societies?

For questions 23 to 26, refer to the musical piece.

Label the parts accordingly.



For questions 27 and 28, refer to the drawing.

**QUESTION 27**

Name the element of design used in the design.

QUESTION 28

What the types of lines are used to create the impression of sloping hills.

QUESTION 29

What is a drama performed without the use of dialogue called?

QUESTION 30

In a test, students were asked to classify certain instruments into their correct category; membranophone, chordophone, idiophone and aerophone.

What category would these following instruments be grouped under?

Kundu, Snare drum, Bongo

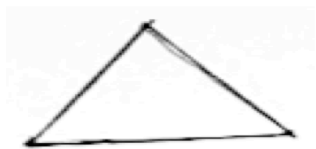
QUESTION 31

Since first emerging in New York City in the seventies, this music style has grown to encompass not just rap music but also an entire lifestyle that consistently incorporates diverse elements of ethnicity technology art and urban life.

What is this style of music called?

QUESTION 32

The illustrations below show the three different classification of an element of design.



A



B



C

Name the element.

QUESTION 33

A sixteenth note is sometimes known as a _____.

For questions 34 and 35, refer to the guitar chord diagrams below.

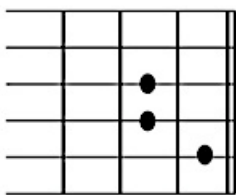


Diagram 1

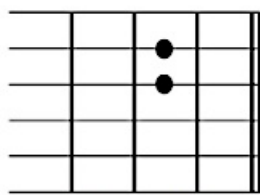


Diagram 2

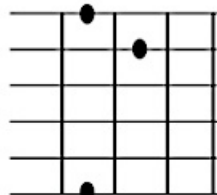


Diagram 3

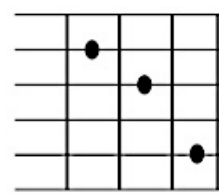


Diagram 4

QUESTION 34

What major chord is Diagram 3?

QUESTION 35

Diagram 2 and 3 are related. In which major scale/key are they found?

PART C: EXTENDED RESPONSE**5 MARKS****QUESTION 36****Read the passage below to answer the questions that follow.****Elements of Music in Practice**

It was period 8 and as usual, tiring time of the day to be in class. To make matters worse, it was an English lesson where students were told to read a chapter of a novel silently to themselves.

As soon as Mr Molz told them to start reading everyone drifted to sleep, including Mr Molz who from time to time, took a peep at the class from behind the novel in front of his face.

The class was in dead silence, time stood at a standstill. Then out of the blue, like an explosion of a bomb, Monica burst out in a very high pitch voice, singing a folk song from Milne Bay. Everyone jumped from their chairs, so startled and wondered what had happened. There was chaos for a minute or two, and then Isaac joined in the singing with Cortylder and Dagia in different tones that blended well with Monica's voice.

Surprisingly, when it came to the chorus, the whole class voluntarily joined in the singing with Mr Molz clapping a rhythmic pattern in accompaniment.

There were smiles and laughter all around the classroom. By the time the bell was rung for the end of the lesson, the class was cured of the dreadful disease.

- I. Define the term pitch in relation to music.
- II. In the third paragraph, Isaac joined Cortylder and Dagia in different tones that blended well with Monica's voice.
Which element of music did this happening depict?
- III. What is another musical element that can be used in place of the noun phrase "rhythmic pattern" in paragraph four?
- IV. The state of silence to the outburst of Monica's sudden high pitch voice, to the smooth flow of class joining in, signifies the use of an element in music.
What is this element?
- V. The sudden singing by Monica and the class joining in would be referred to as... "inventing music while playing instead of planning it in advance." This indicates the use of an element in music.
What is this element?

END OF EXAMINATION

**LOWER SECONDARY SCHOOL CERTIFICATE
EXAMINATION – 2015**

ARTS – ANSWER SHEET



MARKER 1

YEAR		PROV.		SCHOOL			CAND No.		
1	5								
NAME									
SCHOOL									

PART A: (QUESTIONS 1 to 20)

Write the letter of your answer next to each question below.

1	
2	
3	
4	
5	

6	
7	
8	
9	
10	

11	
12	
13	
14	
15	

16	
17	
18	
19	
20	

PART B: (QUESTIONS 21 to 35)

Write your answer next to each question below.

21	
22	
23	
24	
25	

26	
27	
28	
29	
30	

31	
32	
33	
34	
35	

PART C: (QUESTION 36)

Write your answer next to each question below.

I.		IV.	
II.		V.	
III.			



MARKER 2

DO NOT WRITE ON THIS PAGE

CAREFULLY TEAR ALONG THIS PERFORATION

YOU MAY DO YOUR ROUGH WORK ON THIS PAGE