

DEPARTMENT OF  
EDUCATION

LOWER  
SECONDARY  
SCHOOL  
CERTIFICATE  
EXAMINATION  
(LSSCE)

**SOCIAL  
SCIENCE**

Friday

03<sup>rd</sup> October 2014

Time allowed: 3 hours  
8:30 am – 11:30 am

Candidates are advised to  
fully use the time  
allocated



### INSTRUCTIONS TO CANDIDATES:

*(To be read out by the external invigilator before the start of the examination)*

There are **46** questions in this paper worth **50** marks. Attempt **ALL** questions even if you are not so sure of some of the answers.

The Examination is divided into three parts:

**PART A: Multiple Choice** (Questions 1 to 25)

**PART B: Short Answer** (Questions 26 to 45)

**PART C: Extended Response** (Question 46)

The Answer Sheet is part of the Examination Booklet. Take out the middle pages and remove the Answer Sheet by tearing along the perforation. You may use the blank sheet for rough work.

Write your candidate number, name and school name in the space given on the **ANSWER SHEET**.

For each question in **PART A**, choose the correct answer by writing the letter A, B, C or D in the space provided on the **ANSWER SHEET**.

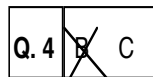
For each question in **PART B** and **PART C**, work out the answer and write it in the space provided on the **ANSWER SHEET**.

If you find a question very difficult, do not spend too much time thinking about it. Skip the question and go on with the rest of the paper. If you have time in the end, return to the difficult questions and think about them more carefully.

Write your answers in **BLUE** or **BLACK** ink (pen or biro).

If you decide to change an answer, make your correction as shown below so that it is clear to the markers what your final answer is. Do **NOT** use correction fluid on your answer sheet.

**Example**



Hand in **BOTH** the Answer Sheet and the papers used for rough work at the end of the examination.

**Extra time will NOT be allowed to complete the examination under any circumstances.**

**Penalty for cheating or assisting to cheat in national examinations is non-certification.**

**DO NOT TURN OVER THIS PAGE AND DO NOT  
WRITE UNTIL YOU ARE TOLD TO START.**

**PART A: MULTIPLE CHOICE QUESTIONS**

**(QUESTIONS 1 to 25)**

**25 MARKS**

For each question, choose the correct answer and write A, B, C or D in the space provided on the ANSWER SHEET.

**QUESTION 1**

All citizens have rights and responsibilities. That means if you have a right you have a responsibility to it. Therefore, if you have a right to shelter, what will be your responsibility?

- A. To own a piece of land.
- B. To build a home and care for it.
- C. To protect and care for the family.
- D. Prepare and eat nutritious food only.

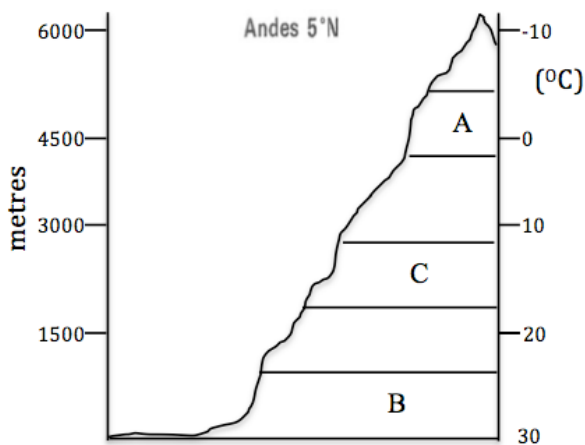
**QUESTION 2**



What is the point of view shown by the cartoonist towards modern warfare?

- A. War causes mass destruction and loss of lives
- B. There are winners in modern warfare.
- C. Both side in war do not lose people and equipment
- D. Man does not create war.

For questions 3 and 4, refer to diagram and information of Altitude and Vegetation change



- i. Bare rocks
- ii. Scrub & Poor Grass
- iii. Mixed forest & Savannah
- iv. Permanent Snow
- v. Temperate Grassland
- vi. Hot & Wet Forest

**QUESTION 3**

Which of these alternatives shows the correct changes in vegetation from the coast to the mountaintop?

- A. i, ii, iii, v, vi, iv
- B. vi, ii, iv, iii, v, i
- C. vi, iii, v, ii, i, iv
- D. i, iv, ii, iii, vi, v

**QUESTION 4**

Which of these statements is **not** correct according to the diagram?

- A. Temperature increase as height decreases.
- B. As height increases, temperature decreases.
- C. Coffee can be grown at area A.
- D. Sugar and cocoa can be grown at area B.

**QUESTION 5**

Listed below are pull and push factors that cause people to migrate.

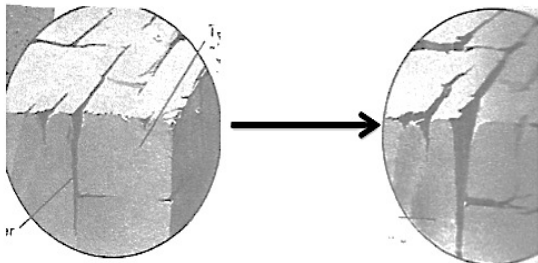
- I. Lack of job opportunities
- II. War
- III. Environment degradation
- IV. Access to services
- V. More entertainment
- VI. Better climate
- VII. Employment opportunities
- VIII. Religious and Ethnic conflict

Which of these contains PUSH factors only?

- A. II, III, V, VIII
- B. III, IV, V, VIII
- C. I, II, III, VIII
- D. I, II, III, IV

**QUESTION 6**

The diagram below shows weathering that happens at high altitude or colder region.



What type of weathering would it be?

- A. Erosion by water.
- B. Heating and Cooling
- C. Freezing and Thawing
- D. Dissolving

**QUESTION 7**

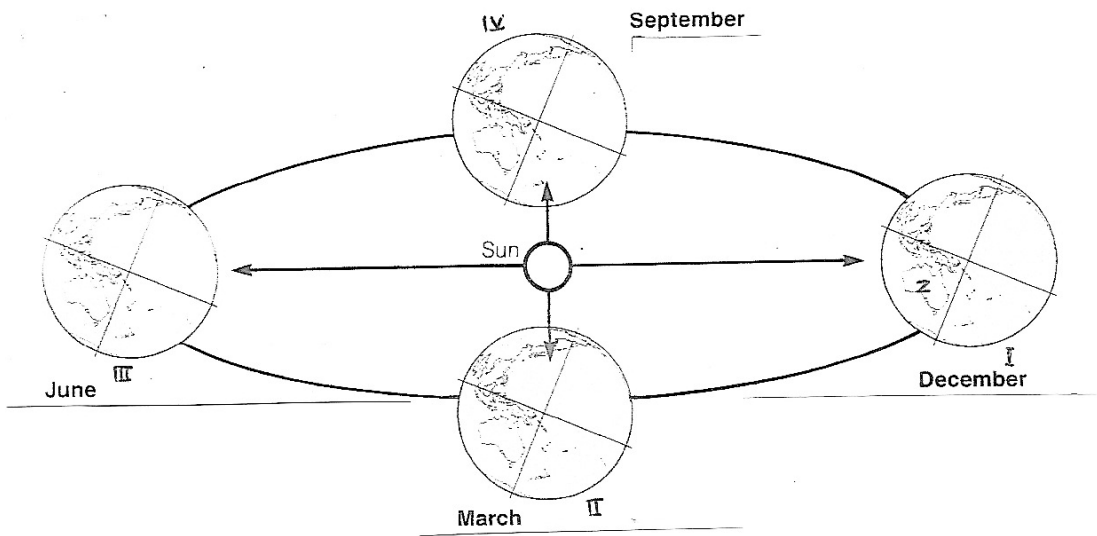
Listed below are tools and information that seafaring people need for their sea journey.

- I. Maps made from shells and sticks
- II. Navigational skills
- III. Skills in preserving food
- IV. Compass
- V. Astrolabe
- VI. Maps
- VII. Stars, Winds & Currents

Which of the above would have been used by the Austronesians to travel the vast Pacific Ocean?

- A. I, II, III, IV
- B. I, II, III, VI
- C. I, II, III, VII
- D. I, II, V, VI

For questions 8 and 9, refer to the diagram below.



**QUESTION 8**

What type of season will be experienced in the northern hemisphere at position I?

- A. Summer
- B. Autumn
- C. Spring
- D. Winter

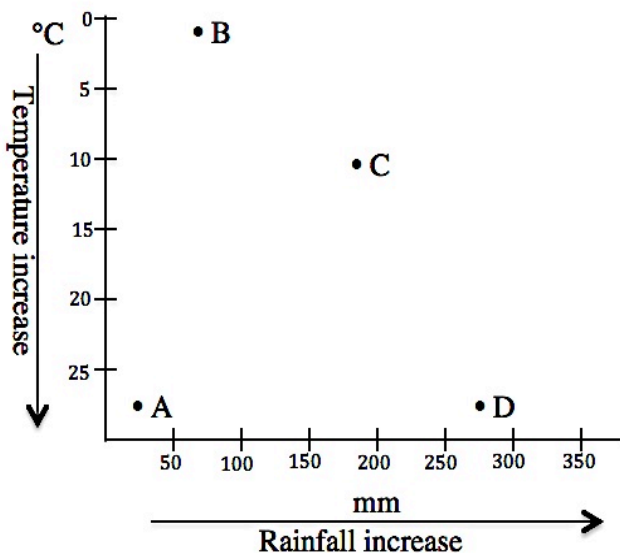
**QUESTION 9**

What type of season will Australia experience in December?

- A. Summer
- B. Autumn
- C. Spring
- D. Winter

For question 10 and 11, refer to the scatter graph below.

**Rainfall and Temperature Distribution**



**QUESTION 10**

Which area will experience the dominant weathering by heating and cooling?

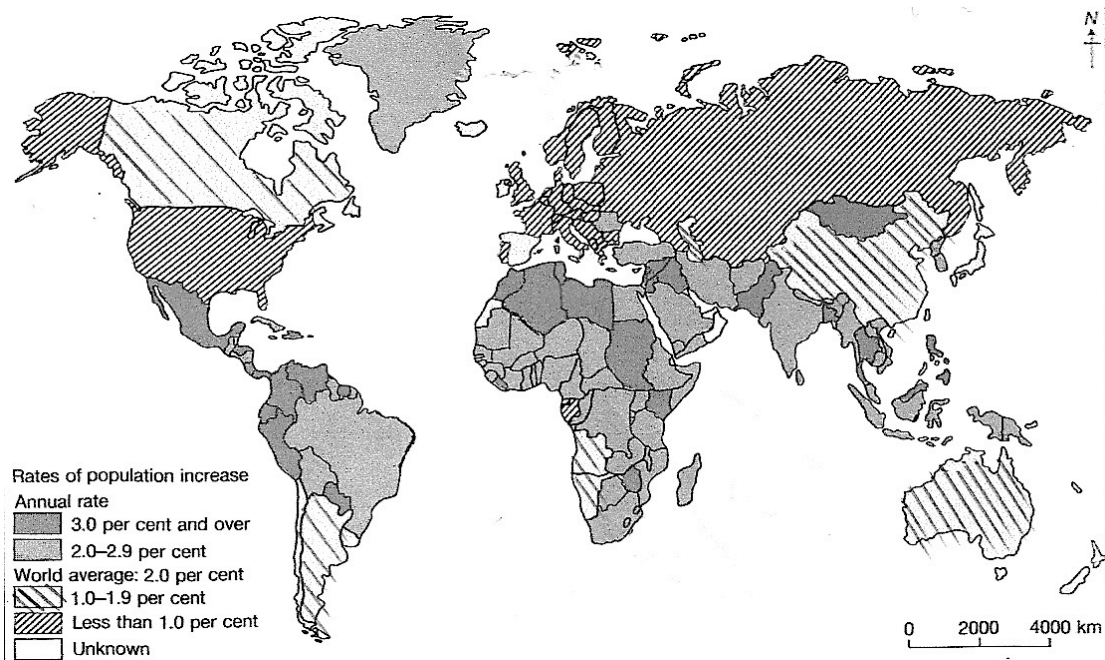
**QUESTION 11**

What type of climate will occur at location D?

- A. Polar
- B. Tropical Hot and Wet
- C. Arid
- D. Cool Temperate



For questions 12 and 13, refer to the population map below.



#### QUESTION 12

Which of these countries have a population increase of less than 1 percent?

- A. Mexico      B. Australia      C. Korea      D. France

#### QUESTION 13

What will be the rate of increase for Madagascar?

- A. 3% and over      B. 2 – 2.9%      C. Less than 1%      D. 0 – 0.9%

For questions 14 and 15, refer to the statement below.

*“It took me months to get the self government date passed by the House of Assembly, but only forty-five minutes to set the date for PNG’s independence. It was one of the happiest days of my life. With some of my colleagues, I had laboured for three years to effect the constitutional changes necessary to bring Papua New Guinea to nationhood. When I decided to go into politics in 1967 the one purpose I had in mind was to be instrumental in bringing the country to self-government and eventual independence. An Australian minister for external territories, C E Barnes said in 1968 that it would be fifty years before Papua New Guinea became independent. At a Pangu Convention rally in 1971, I said it was my aim to bring Papua New Guinea to independence during my term in parliament. I am happy that in the face of Barnes’ gloomy prediction, it took me just seven years to achieve my aim.”*

#### QUESTION 14

Who do you think have spoken these words?

- A. C. E Barnes      B. Sir Michael T. Somare  
C. Sir John Guise      D. Sir Julius Chan

#### QUESTION 15

What was “Barnes’ gloomy prediction” referring to?

- A. The task of writing of PNG’s constitution.  
B. Barnes’ refusal to grant PNG’s independence.  
C. Barnes’ doubtfulness on PNG’s independence.  
D. Local people are primitives and lowly educated.



For questions 21 and 22, refer to the information in the table below.

	Average annual population change (per cent)			
	1950–55	1960–65	1970–75	1980–85
World	1.84	1.98	2.03	1.67
Africa	2.11	2.44	2.74	3.01
North America	1.80	1.49	1.05	0.89
South America	2.72	2.80	2.51	2.30
Asia	2.00	2.46	2.35	1.73
Europe (& USSR)	0.82	0.93	0.65	0.35
Oceania	2.25	2.08	1.85	1.50

An average annual growth rate of 3% means that the population will double in 24 years.  
An average annual growth rate of 2% means that the population will double in 36 years.

### QUESTION 21

Which region did not experience a decline in growth rate between 1950 and 1980?

- A. Oceania      B. Africa      C. Asia      D. North America

### QUESTION 22

The Asian region had a growth rate of 2% at the end of 1955. In what year will the population of the region be doubled?

- A. 1985      B. 1936      C. 1990      D. 1955

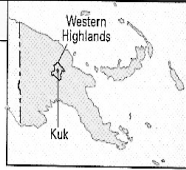
For questions 23 to 225, refer to the passage below.

Kuk swamp is one of a number of swamps in the fertile Wahgi valley. It is about 12.5 km northeast of Mount Hagen town. In the 1960's drainage ditches were dug into the swamp so that tea could be planted. During digging, old wooden spades were found.

Archaeologists came to Kuk to look at these old wooden spades. They also looked at the walls of the newly dug drainage ditches and found traces of older drainage channels. They wondered how old these channels could be. Carbon dating on one of the digging sticks dated it to 2300 years ago. The archaeologists concluded that a study of the Kuk site might tell them a lot about the past agricultural practices of the area.

Major archaeological investigation began at Kuk in 1972. As the researchers dug into the swamp, two main things told them about past agricultural practices in the area. Firstly, the drainage channels themselves, and secondly, the material within the channels. The many layers of drains showed that people had used the swamp for agriculture over a long period of time. The material which had eroded into the channels from the surrounding dryland areas, revealed what type of agriculture had been practiced in those areas surrounding the swamp. Kuk swamp is like a vertical timeline; the deeper into the swamp, the older the ditches, and the older the depositions within them. Also, the deeper the layers of drains, the older the record of wetland agriculture in the swamp; and the deeper the different layers of deposition, the older the evidence of the dryland agriculture in the area surrounding the swamp.

During the period of agriculture in the area there were twenty major volcanic eruptions in neighbouring areas that left ash layers in the swamp. These ash layers help to date the



Western Highlands  
Kuk

different times of swamp use and deposition.

Study of the swamp has revealed that agriculture started in the area over 9000 years ago. This makes it one of the earliest known places in the World. The different layers of ditches in the swamp show that wetland drainage was practiced a number of times (or phases). The deposition from the deepest part of the swamp reveals that 9000 years ago there was shifting cultivation under long forest fallow in areas surrounding the swamp. The deposition layers in the swamp show that the use of the surrounding land slowly changed this surrounding area to grassland so new agricultural practices were then needed. Therefore, practices like casuarina planting and raised garden beds were developed.

### QUESTION 23

Where is Kuk archaeological site located?

- A. Southern Highlands Province      B. Jiwaka Province  
C. Eastern Highlands Province      D. Western Highlands Province

**QUESTION 24**

What type of agriculture was practiced in Kuk 9000 years ago?

- A. Swampland agriculture
- B. Swampland and Wetland agriculture
- C. Dry land agriculture
- D. Dry land and Wetland agriculture

**QUESTION 25**

Which of these statements is **not** true?

- A. Radiocarbon dating is a method used to determine age of wooden spade.
- B. There are twenty volcanic eruptions in neighbouring areas during the period.
- C. Deposition in the swamp layers show use of the surrounding area slowly changed.
- D. Materials, which eroded into channels, do not reveal the type of agriculture.

**PART B: SHORT ANSWERS**

**(QUESTIONS 21 to 45)**

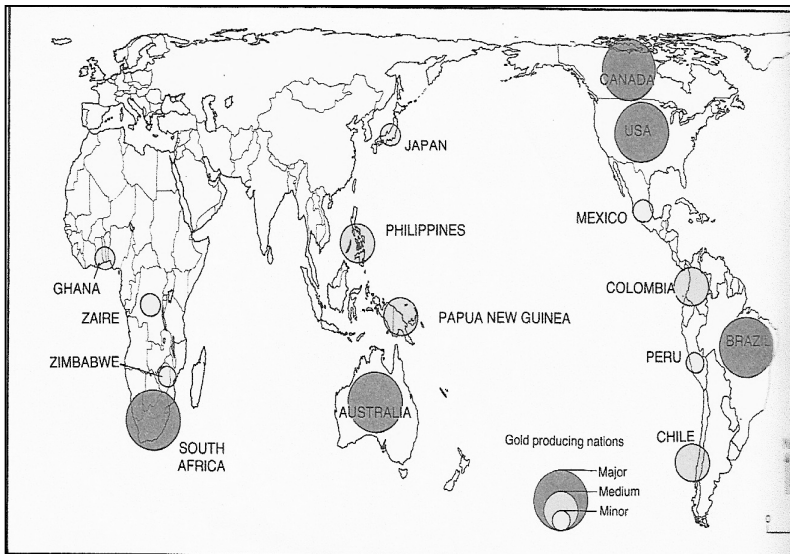
**20 MARKS**

**For each question, work out the answer and write the answer in the space provided on the ANSWER SHEET.**

**QUESTION 26**

Which two fossil fuels are mined in PNG?

**QUESTION 27**



According to the map, how many major gold mining sites are located in the Southern Hemisphere?

**For questions 28 and 29, refer to the illustration below.**

*The cartoon illustrates the coming of Europeans to the Pacific.*



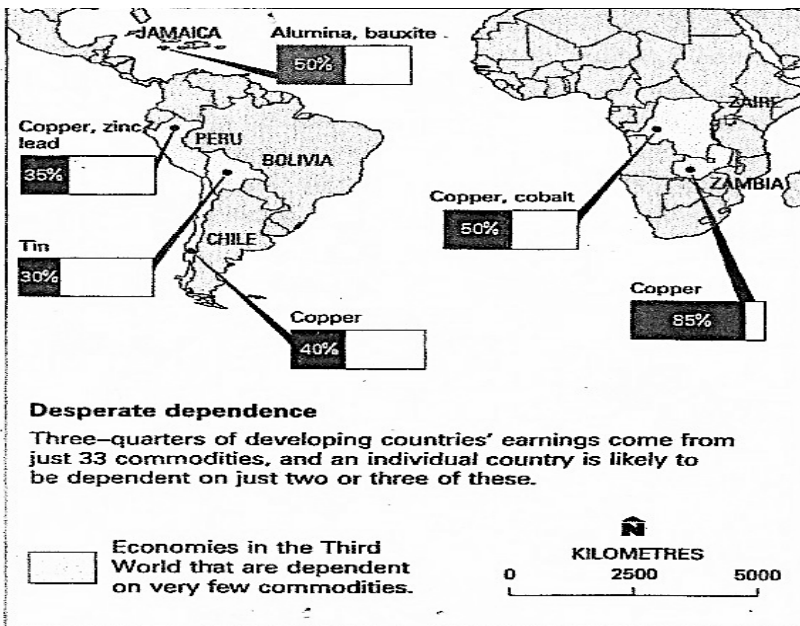
**QUESTION 28**

Which group of people do you think “**religion**” represents?

**QUESTION 29**

Which European group does “**rum**” represent?

For questions 30 and 31, refer to the trade map below.



**QUESTION 30**

Which Caribbean country earns its income from only two commodities?

**QUESTION 31**

Which commodity does Zambia earn its income from?

For questions 32 and 33, refer to the table of information below.

Agency	Work in PNG
World Health Organisation (WHO)	Programmes to improve basic health and disease control
Food and Agriculture Organisation (FAO)	Programmes to improve farming methods and encourage research into new and better varieties of crops and livestock
United Nations Educational, Scientific and Cultural Organisation (UNESCO)	Programmes to help with environmental and educational issues and scientific research.
United Nation High Commission for Refugees (UNHCR)	Helps with the Irian Jayan refugees
International Bank for Reconstruction and Development (IRDB) (also called the World Bank)	Funds many project in PNG especially in education, agriculture and communications.
United Nations Development Agency (UNDA)	Helps in specific development projects. It funded the re-forestation programme in PNG
International Monetary Fund (IMF)	Supervises international rates and helps government budget their money

**QUESTION 32**

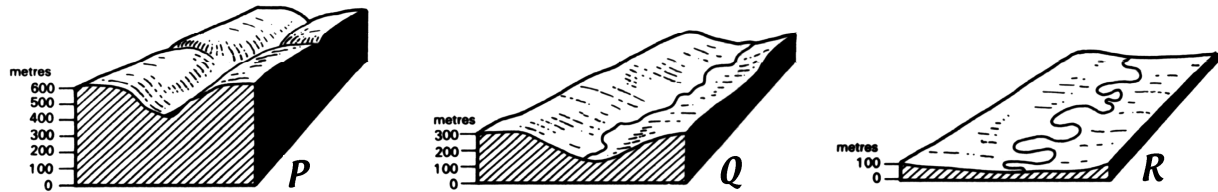
Which UN agency should PNG government seek assistance from should it decides to plant tress on bare land to create a forest?

**QUESTION 33**

Which UN agency helps developing nations build new classrooms?

For questions 34 and 35, refer to the following information.

The diagram below shows the stages of a river from the beginning to the end.



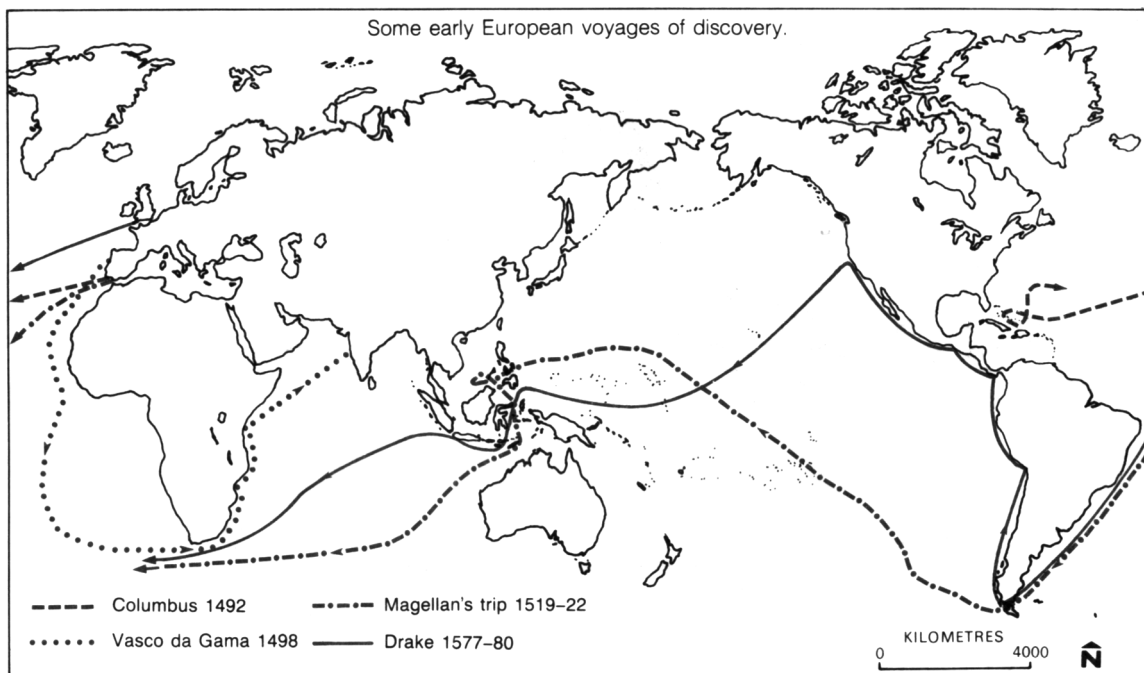
**QUESTION 34**

Which diagram would deposition be the main activity?

**QUESTION 35**

What type of activity would be dominant at diagram P?

For questions 36 to 39, refer to the map below.



**QUESTION 36**

How many years after Columbus did Vasco da Gama take his voyage?

**QUESTION 37**

Which two explorers made it into the Pacific region?

**QUESTION 38**

Who explored the west coast of the American continents?

**QUESTION 39**

Name the two oceans that Vasco da Gama made his voyage through to reach India.

For questions 40 to 45, refer to the temperature and rainfall tables below.

**Station A**

	J	F	M	A	M	J	J	A	S	O	N	D
TEMP (°C)	-17	-12	4	10	15	22	26	24	16	11	3	-2
PRECIP (MM)	-	10	10	30	50	60	230	180	70	30	20	10

**Station B**

	J	F	M	A	M	J	J	A	S	O	N	D
TEMP (°C)	25	23	21	18	17	16	15	16	17	18	19	20
PRECIP (MM)	20	15	10	-	-	-	-	-	-	-	20	30

**Station C**

	J	F	M	A	M	J	J	A	S	O	N	D
TEMP (°C)	27	28	28	28	27	26	26	27	28	28	27	27
PRECIP (MM)	230	180	190	200	170	220	180	220	180	220	230	300

**Station D**

	J	F	M	A	M	J	J	A	S	O	N	D
TEMP (°C)	29	30	30	28	27	25	24	24	26	28	29	30
PRECIP (MM)	380	330	225	100	35	20	10	10	10	50	120	260

**Station E**

	J	F	M	A	M	J	J	A	S	O	N	D
TEMP (°C)	-29	-28	-26	-22	-10	3	10	4	2	-5	-15	-28
PRECIP (MM)	15	10	15	20	10	25	50	50	25	30	25	20

**QUESTION 40**

Which of these stations shows the climate for the most northerly location?

**QUESTION 41**

What type of vegetation is likely to be found in station B?

**QUESTION 42**

Which location has the second highest temperature range?

**QUESTION 43**

Which station has the least average rainfall?

**QUESTION 44**

Which station shows a warm dry winter?

**QUESTION 45**

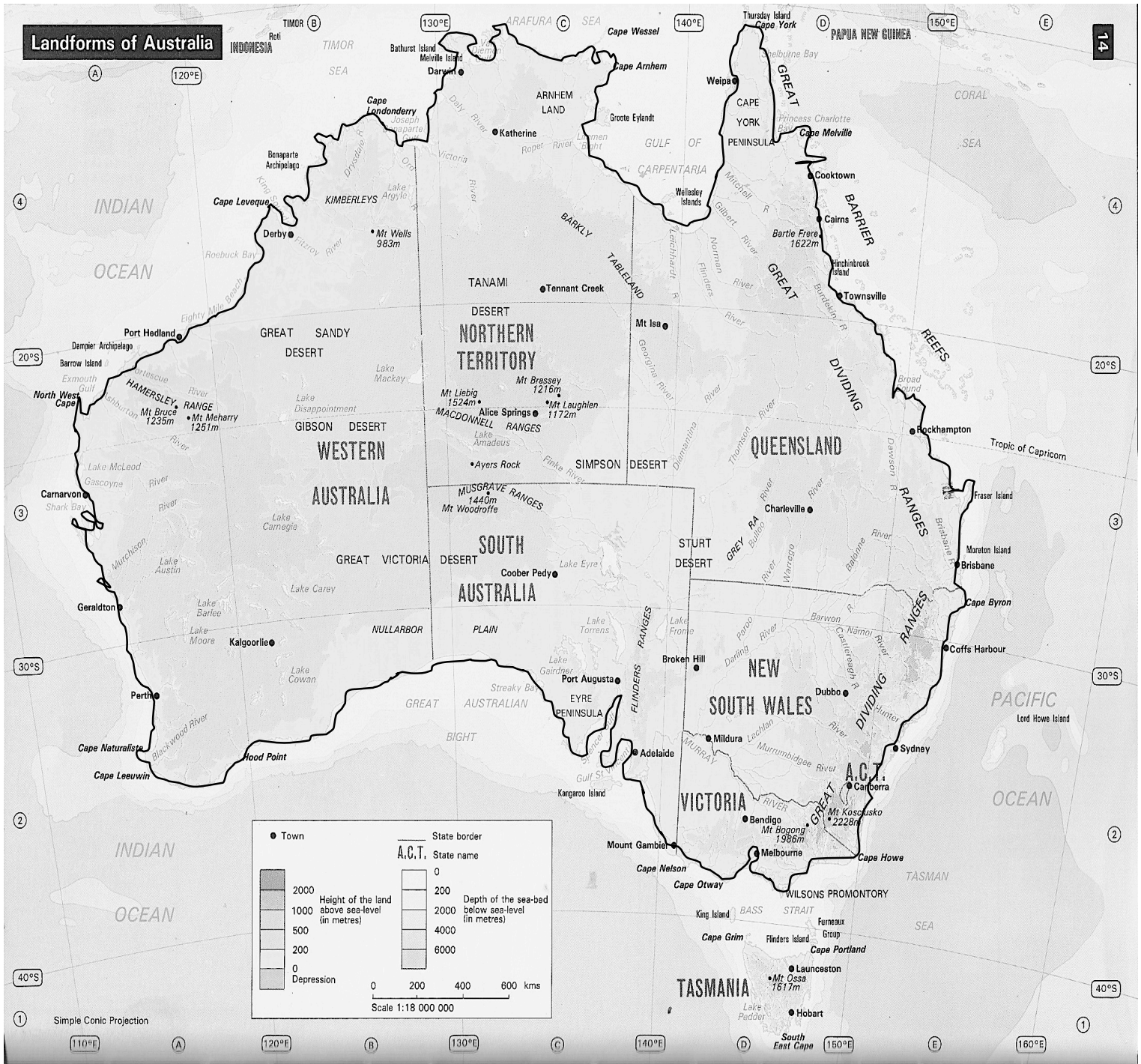
Which station represents a place experiencing most snowfall?



**PART C: EXTENDED RESPONSE**

**5 MARKS**

**QUESTION 46**



I. In which direction would a plane fly from Perth to Darwin?	IV. What is the straight-line distance from Alice Springs to Cairns?
II. Which line of Latitude is Port Headland located on?	V. The Northern Territory has three of Australia's highest peaks. Name the highest mountain among the three.
III. Which direction is Brisbane from Adelaide?	

**END OF EXAMINATION**

**LOWER SECONDARY SCHOOL CERTIFICATE  
EXAMINATION – 2014**

**SOCIAL SCIENCE – ANSWER SHEET**



**MARKER 1**

YEAR		PROV.		SCHOOL			CAND No.		
1	4								
NAME									
SCHOOL									

**PART A: (Question 1 to 25)**

Write the letter of your answer next to each question below.

1	
2	
3	
4	
5	

6	
7	
8	
9	
10	

11	
12	
13	
14	
15	

16	
17	
18	
19	
20	

21	
22	
23	
24	
25	

**PART B (Question 26 to 45)**

Write your answer next to each question below.

26	
27	
28	
29	
30	

31	
32	
33	
34	
35	

36	
37	
38	
39	
40	

**PART C (Questions 46)**

Write your answer next to each question below.

41	
42	
43	
44	
45	

46	I.	
	II.	
	III.	
	IV	<i>kilometres</i>
	V	



**MARKER 2**

**DO NOT WRITE ON THIS PAGE**

**YOU MAY DO YOUR ROUGH WORK ON THIS PAGE**

**CAREFULLY TEAR ALONG THIS PERFORATION**

**YOU MAY DO YOUR ROUGH WORK ON THIS PAGE**