



DEPARTMENT OF
EDUCATION

LOWER
SECONDARY
SCHOOL
CERTIFICATE
EXAMINATION
(LSSCE)

ARTS

Tuesday

07th October 2014

Time allowed:
1 hour 30 minutes

8:30 am – 10:00 am

Candidates are advised to
fully use the time
allocated



INSTRUCTIONS TO CANDIDATES:

(To be read out by the external invigilator before the start of the examination)

There are **36** questions in this paper worth **40** marks. Attempt **ALL** questions even if you are not so sure of some of the answers.

The Examination is divided into three parts:

PART A: Multiple Choice (Questions 1 to 20)

PART B: Short Answer (Questions 21 to 35)

PART C: Extended Response (Question 36)

The Answer Sheet is part of the Examination Booklet. Take out the middle pages and remove the Answer Sheet by tearing along the perforation. You may use the blank sheet for rough work.

Write your candidate number, name and school name in the space given on the **ANSWER SHEET**.

For each question in **PART A**, choose the correct answer by writing the letter A, B, C or D in the space provided on the **ANSWER SHEET**.

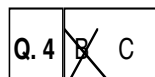
For each question in **PART B** and **PART C**, work out the answer and write the answer in the space provided on the **ANSWER SHEET**.

If you find a question very difficult, do not spend too much time thinking about it. Skip the question and go on with the rest of the paper. If you have time in the end, return to the difficult questions and think about them more carefully.

Write your answers in **BLUE** or **BLACK** ink (pen or biro).

If you decide to change an answer, make your correction as shown below so that it is clear to the markers what your final answer is. Do **NOT** use correction fluid on your answer sheet.

Example



Hand in **BOTH** the Answer Sheet and the papers used for rough work at the end of the examination.

Extra time will NOT be allowed to complete the examination under any circumstances.

Penalty for cheating or assisting to cheat in national examinations is non-certification.

**DO NOT TURN OVER THIS PAGE AND DO NOT
WRITE UNTIL YOU ARE TOLD TO START.**

PART A: MULTIPLE CHOICE QUESTIONS**(QUESTIONS 1 to 20)****20 MARKS**

For each question, choose the correct answer and write A, B, C or D in the space provided on the ANSWER SHEET.

QUESTION 1

In miming, what does character mime interpret?

- A. Thoughts and Feelings of a character
- B. Thoughts and Feelings of a character with other character.
- C. Observation and Reproduction of everyday activity.
- D. Contemporary movement to modern music.

QUESTION 2

Which of the following was a famous Rock and Roll group?

- A. Rolling Stones
- B. George Telek and Painim Wok
- C. Bob Marley and the Wailers
- D. Saugas Band

QUESTION 3

What concept is best used in dance and drama for actors and dancers making up movements, actions and words to develop plays and dances?

- A. Dramatisation
- B. Improvisation
- C. Choreography
- D. Stage performance

QUESTION 4

What type of music is characterized by thick heavy guitar, drum centred sound and the use of highly amplified distorted sound?

- A. Rhythm and Blues
- B. Rock and Roll
- C. Hip Pop
- D. Heavy Metal

QUESTION 5

A sharp indicates that a note be _____ by a semitone.

- A. played
- B. raised
- C. sustained
- D. lowered

QUESTION 6

The following arrangement of line shows movement. Which one shows continuous orderly movement?

- A. 
- B. 
- C. 
- D. 

For questions 7 to 9, refer to the part of a script below.

ACT V, Scene iii

Newsreader at the news desk

Newsreader: Unconfirmed reports tonight indicate that Mrs. Macbeth, wife of the Chairman of the Board of Scottish took her own life this evening. Police have issued a statement that they do not suspect foul play in this, the latest in a series of death of people associated with this multinational company.

ACT V, Scene iv

Macbeth is sitting at his desk, surrounded by files and graphs. The graphs all go steeply down. Macbeth is looking very stressed.

Macbeth: Life is a tale told by an idiot, full of sound and fury, signifying nothing.
[Macbeth's mobile phone ring]
Macbeth. Birnam Wood shares are going through the roof? Sell, sell, sell, you cream-faced loon. We'll

QUESTION 7

Which character is in scene iii Act V?

- A. Mrs. Macbeth
- B. Policeman
- C. News Reader
- D. Mr. Macbeth

QUESTION 8

In Act V, scene iv, Macbeth is an/ a

- A. actor.
- B. chairman.
- C. character.
- D. director.

QUESTION 9

What prop is very useful in the act by Macbeth in scene iv?

- A. Desk
- B. Files
- C. Graphs
- D. Mobile phone

QUESTION 10

A musical drama in which the words are usually sung and accompanied by an orchestra is called _____.

- A. opera
- B. big band
- C. ensemble
- D. concert

QUESTION 11

Two dimensional objects have _____.

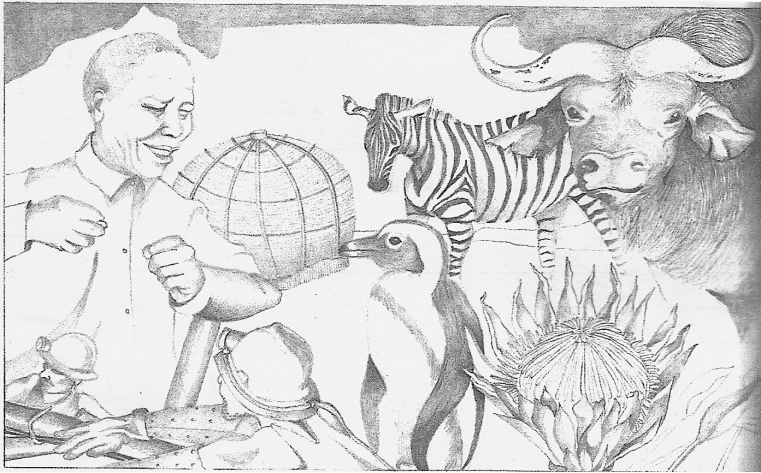
- A. width and depth
- B. height and depth
- C. height only
- D. height and width

QUESTION 12

Which element of art when used with contrast creates a sense of three-dimension?

- A. Space
- B. Tone
- C. Direction
- D. Rhythm

For question 13 and 14, refer to the illustration below.



QUESTION 13

Which principle of design is used in the illustration?

- A. Unity
- B. Abstraction
- C. Sequence
- D. Distribution

QUESTION 14

Which element of design is used in the illustration to make it look 3 dimensional?

- A. Colour
- B. Shape
- C. Surface
- D. Tone

QUESTION 15

What is the style of music that is used for advertisement called?

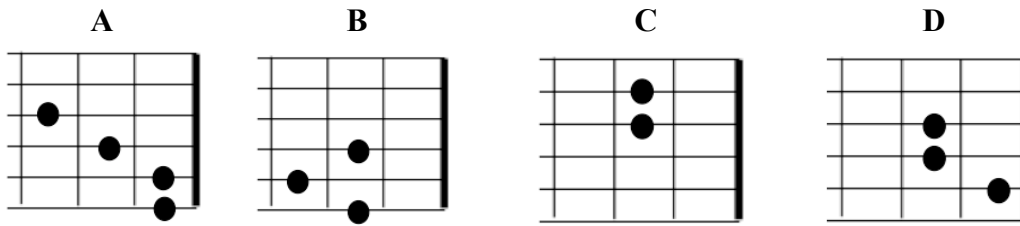
- A. Campaign
- B. Tune
- C. Jingle
- D. Melody

QUESTION 16

What is the role of a stage manager?

- A. Oversee the production at the back stage during performances.
- B. Direct the production during performance rehearsals
- C. Prepare actors for their turn to go onto the stage.
- D. Control all the actors for the performance auditions.

For question 17 to 20, refer to the chord charts below.



QUESTION 17

Which chord represents F major?

QUESTION 18

Which chord represents D major?

QUESTION 19

Which of the chords above represents the relative minor of G major?

QUESTION 20

This chord is the relative minor of C major.

PART B: SHORT ANSWERS**(QUESTIONS 21 to 35)****15 MARKS**

For each question, work out the answer and write the answer in the space provided on the ANSWER SHEET.

For questions 21 to 25, read the definition in the box below and match them with each statement.

harmonious: seeming to belong or fit well with; calming

harmony: pleasing arrangement, consistent, balanced

haunting: unnerving, worrying

Heidelberg School: a group of artists, often called the 'Australian Impressionists', who painted the Australian bush, particularly around Box Hill and Heidelberg in Victoria, from around 1885. Their works showed the area's harshness, dryness and grey-green colours.

heritage: the traditions, influences and experiences of a people or a community

high art: socially acceptable art, worthy of exhibition in public galleries; skilful, showing taste or appreciation of aesthetics (beauty)

High Renaissance: the main characteristics of the style were: a feeling of harmony and balance; calmness and serenity; an ideal world without imperfections; an understanding of perspective, resulting in the creation of deep space; an understanding of the proportions of the human figure

QUESTION 21

Paul's paintings are always about life in general. Subjects are composed to depict every day lifestyle. His work is always sort after by art lovers and the general public.

Which does the above refer to?

QUESTION 22

Papua New Guineans are proud of their way of life.

Which word defines "our way of life"?

QUESTION 23

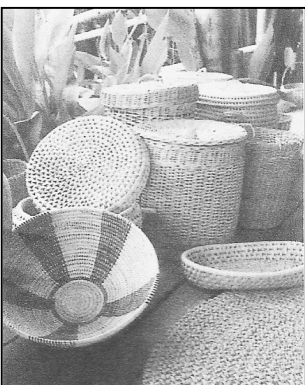
Paul's compositions of subjects and his colours always blend and seem to belong to each other.

Which word suitably describes this explanation?

QUESTION 24

Perfect style of art, subject relationship, and cool feelings.

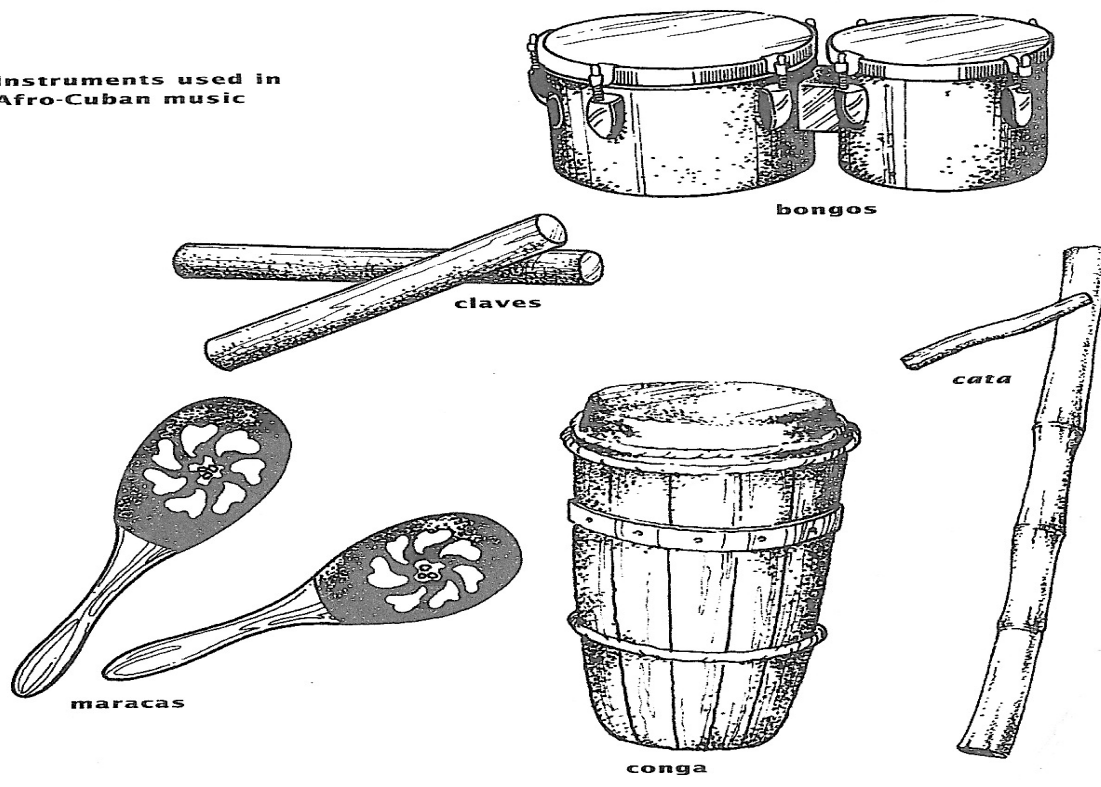
Which style is explained?

QUESTION 25

What technique of constructing 3 dimensional artworks was used to create these artifacts?

For questions 26 and 27, refer to the instruments below.

Instruments used in Afro-Cuban music



QUESTION 26

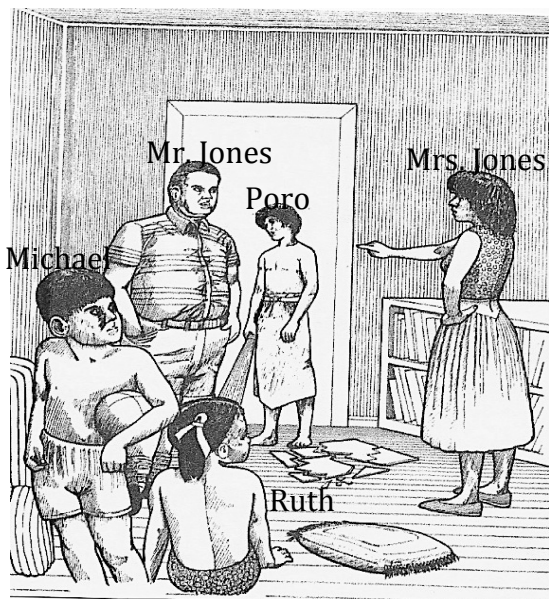
All of the above instruments produce sound through vibration.
How many are classified under idiophone?

QUESTION 27

Which instrument is similar to a tambourine?

For questions 28 to 31, refer to the picture below.

The picture depicts a scene in a play.



QUESTION 28

Where is the setting of the scene?

QUESTION 29

Who is the focus of attention according to the picture?

QUESTION 30

Who broke the mirror?

QUESTION 31

What personal prop does Michael has?

For questions 32 to 35, refer to the word list below.

Wordlist: rhythm, repetition, harmony, pattern.

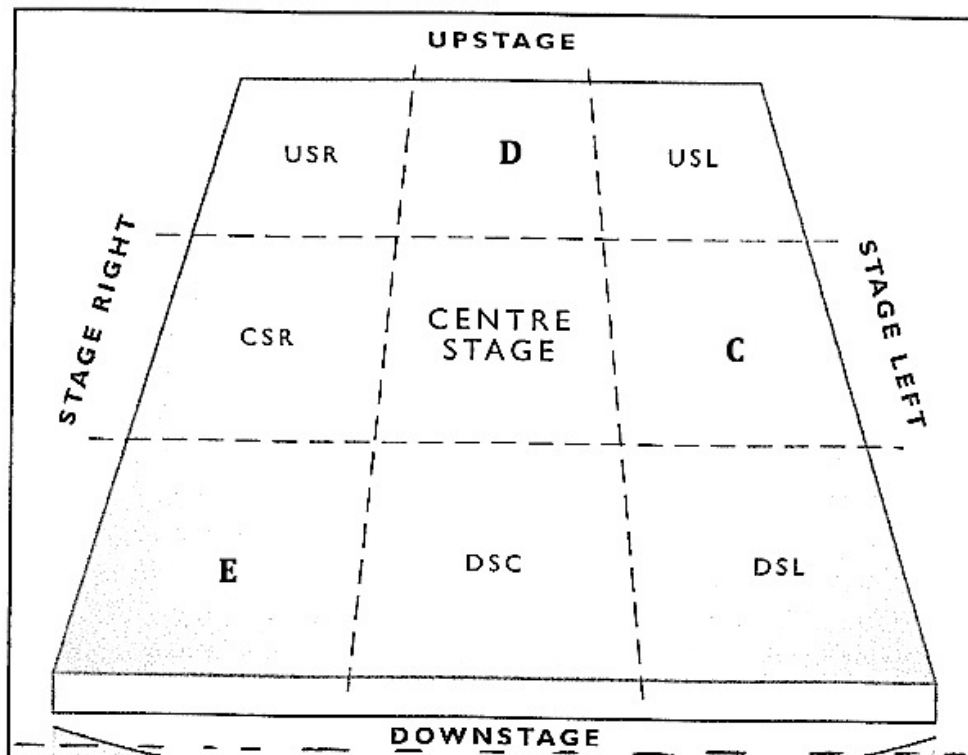
Lines are considered to be 2 or more dots joined together and if repeated, it can create a 32. The 33 of lines in a 34 can also create 35.

PART C: EXTENDED RESPONSE

5 MARKS

QUESTION 36

The floor plan below is a typical proscenium arch theatre, where the audiences sit in a block facing the stage. All positions on stage are from the actor's point of view.



- A. Where on the plan would the audience sit?
- B. What does DSC stand for?
- C. Write the correct name for letters C, D and E on the floor plan.

END OF EXAMINATION

**LOWER SECONDARY SCHOOL CERTIFICATE
EXAMINATION – 2014**

ARTS – ANSWER SHEET



MARKER 1

YEAR		PROV.		SCHOOL			CAND No.		
1	4								
NAME									
SCHOOL									

PART A: (QUESTIONS 1 to 20)

Write the letter of your answer next to each question below.

1	
2	
3	
4	
5	

6	
7	
8	
9	
10	

11	
12	
13	
14	
15	

16	
17	
18	
19	
20	

PART B: (QUESTIONS 21 to 35)

Write your answer next to each question below.

21	
22	
23	
24	
25	

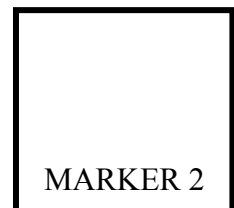
26	
27	
28	
29	
30	

31	
32	
33	
34	
35	

PART C: (QUESTION 36)

Write your answer next to each question below.

a.		d.	
b.		e.	
c.			



MARKER 2

DO NOT WRITE ON THIS PAGE

CAREFULLY TEAR ALONG THIS PERFORATION

YOU MAY DO YOUR ROUGH WORK ON THIS PAGE