



DEPARTMENT OF  
EDUCATION

LOWER SECONDARY  
SCHOOL CERTIFICATE  
EXAMINATIONS

(LSSCE)

SOCIAL  
SCIENCE

Friday  
04 October 2013

Time allowed:  
3 hours  
(8:30 am – 11:30 am)

Candidates are advised to  
fully utilise the time  
allocated



### INSTRUCTIONS TO CANDIDATES:

*(To be read out by the External Invigilator before the start of the examination)*

There are **46** questions in this paper worth **50** marks. Attempt ALL questions, even if you are not sure of some of the answers.

The Examination is divided into three parts:

**PART A:** Multiple Choice (Questions 1 to 25)

**PART B:** Short Answer (Questions 26 to 45)

**PART C:** Extended Response (Question 46)

The Answer Sheet is part of the Examination Booklet. Take out the middle pages and remove the Answer Sheet by tearing along the perforation. You may use the blank sheet for rough work.

Write your candidate number, name and school name in the space given on the **Answer Sheet**.

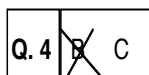
For each question in **PART A**, choose the correct answer by writing the letter A, B, C or D in the space provided on the **ANSWER SHEET**.

For each question in **PART B and C**, work out the answer and write the answer in the space given on the **Answer Sheet**.

If you find a question difficult, do not spend too much time thinking about it. Leave the question and go on with the rest of the paper. If you have time at the end, return to the difficult questions and think about them more carefully.

Write your answers in BLUE or BLACK pen.

If you decide to change an answer, make your correction as shown below so that it is clear to the markers what your final answer is. Do NOT use correction fluid on your answer sheet.



Hand in BOTH the Answer Sheet and the papers used for rough work at the end of the examination.

**Extra time will not be allowed to complete the examination under any circumstances.**

**Penalty for cheating or assisting others to cheat in national examinations is non-certification.**

**DO NOT TURN OVER THE PAGE AND DO NOT  
WRITE UNTIL YOU ARE TOLD TO START.**

**PART A: MULTIPLE CHOICE****(QUESTIONS 1 to 25)****25 MARKS**

**For each question, choose the correct answer by writing the letter A, B, C or D in the space provided on the ANSWER SHEET.**

**QUESTION 1**

Who was the first Governor General of Papua New Guinea?

- |                       |                         |
|-----------------------|-------------------------|
| A. Sir Michael Somare | B. Sir Maori Kiki       |
| C. Sir John Guise     | D. Sir Kingsford Dibela |

**QUESTION 2**

The National Executive Council (NEC) refers to

- |                               |                        |
|-------------------------------|------------------------|
| A. Cabinet Members.           | B. Electoral Officers. |
| C. National Census Officials. | D. Opposition Members. |

**QUESTION 3**

Contour ploughing is considered sustainable because it involves

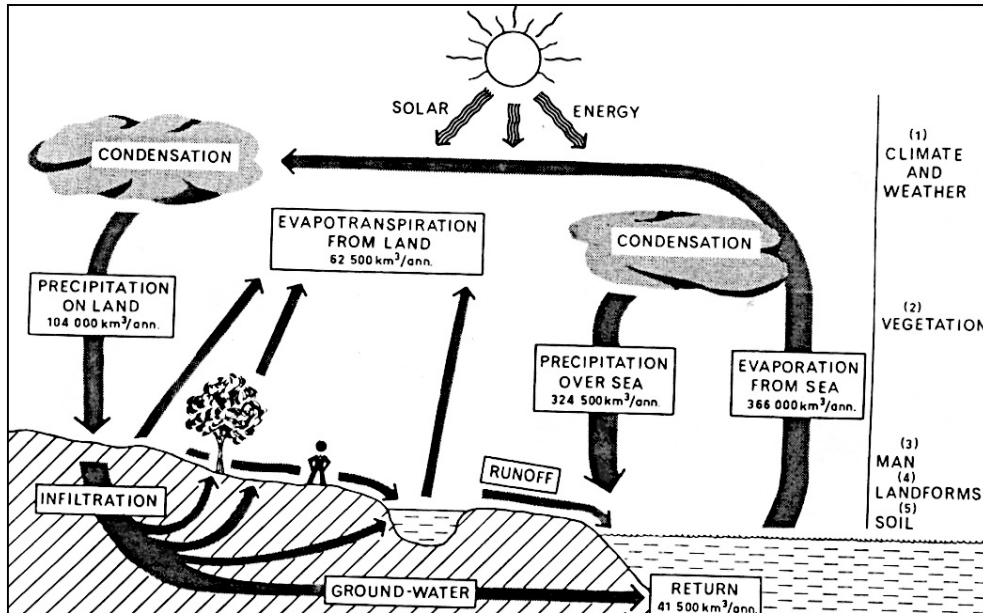
- A. ploughing up and downhill preventing soil erosion.
- B. using drainage systems around a hill.
- C. ploughing around the hill preventing soil erosion.
- D. planting trees to stop soil erosion caused by wind.

**QUESTION 4**

PNG has offices in other countries that look after our relationship with other countries. Offices that are found in countries that are not members of the Commonwealth are called

- |                     |                |
|---------------------|----------------|
| A. High Commission. | B. Diplomats.  |
| C. Embassy.         | D. Ambassador. |

For questions 5 and 6, refer to the diagram below.



**QUESTION 5**

Where does the source of energy required to drive the water cycle originate?

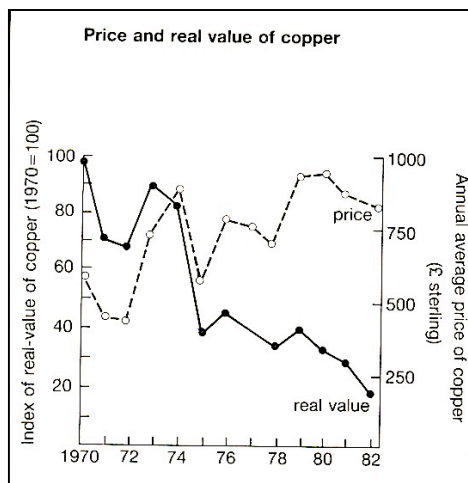
- A. Wind
- B. Oceans
- C. Sun
- D. Hydro electricity

**QUESTION 6**

Which of these processes add water to the atmosphere?

- A. Evaporation and Transpiration
- B. Condensation and Precipitation
- C. Infiltration and Condensation
- D. Dehydration and Rehydration

For questions 7 and 8, refer to the graph below.



**QUESTION 7**

What happened to the price of copper between 1970 and 1982?

- A. It remained stable.
- B. It increased.
- C. It fluctuated.
- D. It decreased.

**QUESTION 8**

What is the approximate real value of copper in 1975?

- A. 35
- B. 40
- C. 260
- D. 280

For questions 9 and 10, refer to the diagram below.



### QUESTION 9

What is the main activity shown in the illustration?

- A. Mining            B. Deforestation  
C. Gardening       D. Settlement

### QUESTION 10

What is the main idea shown by this drawing?

- A. Settlement in areas as this is forbidden because of taboo.  
B. The international government policy on developing much areas of the land.  
C. Destruction done to the homes of indigenous plants and animals.  
D. Illustrating excellent work of bulldozers on clearing areas.

For questions 11 to 13, refer to the list of renewable and non-renewable resources.

- |                  |                       |
|------------------|-----------------------|
| I. Coal          | VIII. Tidal Wave      |
| II. Biomass      | IX. Oil               |
| III. Wind        | X. Nuclear            |
| IV. Solar energy | XI. Metallic minerals |
| V. Geothermal    | XII. Forests          |
| VI. Gas          | XIII. Firewood        |
| VII. Water       |                       |

### QUESTION 11

Which of these contain examples of sustainable resources?

- A. I, II, VII       B. V, VI, XI       C. VI, X, XI       D. II, III, XII

**QUESTION 12**

What sources of energy are commonly used in PNG?

- A. I, II, V, VII, XII                      B. VI, VII, IX, XIII  
C. I, III, VII, XIII                        D. III, IV, VII, IX,

**QUESTION 13**

Which of these alternatives contain fossil fuels only?

- A. I, II, XII      B. I, VI, IX      C. II, VI, XI      D. VI, IX, XII

**For questions 14 and 15, refer to the passage below.**

**COAL**

Coal is formed when heat and pressure transform plant material over millions of years. Coal passes through four stages of development. The first stage, peat, is partially decayed plant material that sometimes looks like soil. Peat then becomes lignite, which is a sedimentary rock that is often called brown coal. Continued heat and pressure transforms lignite into bituminous coal, or soft coal. Bituminous coal is another sedimentary rock. Coal's last stage of development is a metamorphic rock called anthracite or hard coal. As coal develops from peat to bituminous, it becomes harder and releases more heat when burned. Power plants primarily use coal to generate electricity. In fact, electric power plants use more than 70 percent of the coal mined today. The world has enormous coal reserves.

**QUESTION 14**

What is the type of coal that is called 'brown coal'?

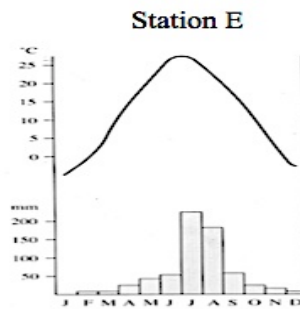
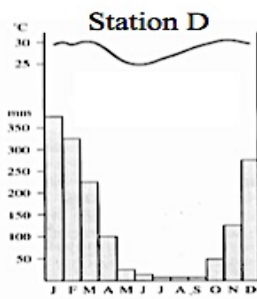
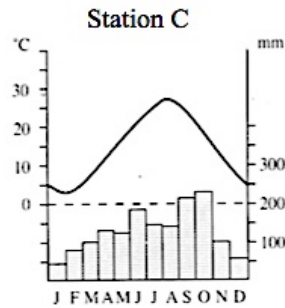
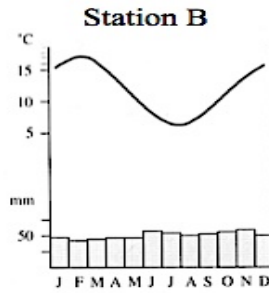
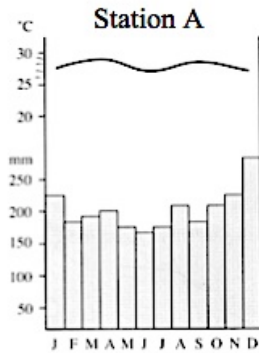
- A. Lignite      B. Peat      C. Anthracite      D. Bituminous Coal

**QUESTION 15**

Which of these statements is not true according to the passage.

- A. Coal is formed from plant remains over million of years.  
B. All the different types of coal are sedimentary rock.  
C. There are four stages in the development of coal.  
D. Bituminous coal releases more heat when burned.

For questions 16 to 19, refer to the climographs below.



**QUESTION 16**

Station D represents the city of \_\_\_\_\_.

- A. Singapore      B. Tokyo      C. Auckland      D. Darwin

**QUESTION 17**

Singapore's climate is best represented by \_\_\_\_\_.

- A. Station A      B. Station B      C. Station C      D. Station D

**QUESTION 18**

Which station shows the extremes in temperature?

- A. Station B      B. Station C      C. Station D      D. Station E

**QUESTION 19**

During which of the four seasons was the highest amount of rainfall recorded at Station C?

- A. Summer      B. Spring      C. Winter      D. Autumn

For questions 20 and 21, refer to the information in the table below.

**Papua New Guinea's Tourist Visitation**

Country	Number of Tourist
Australia	14 425
Japan	1 698
Singapore	1 105
United Kingdom	2 464
West Germany	1 134
United States of America	4 021
New Zealand	2 024
Others	5 209

**QUESTION 20**

Which country do most of PNG's visitors come from?

- A. West Germany      B. Japan  
C. Singapore      D. New Zealand

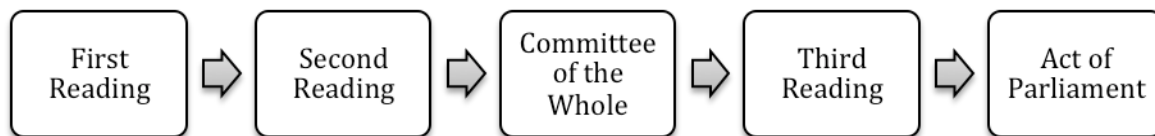
**QUESTION 21**

How many more visitors from United Kingdom visit PNG than the other European country?

- A. 1330      B. 2443  
C. 1432      D. 1303

For questions 22 and 23, refer to the flow chart and the jumbled information labelled I, II, III, IV and V below.

**Parliament process of Making Law**



- I. The Speaker of the House signs the bill and makes it become a law.  
II. Members vote for the final version of the law.  
III. Proposer of the bill explains it and members debate it.  
IV. Members consider the bill and make amendments.  
V. The bill is introduced to Parliament.

**QUESTION 22**

Which of the statement above would be part of the First Reading?

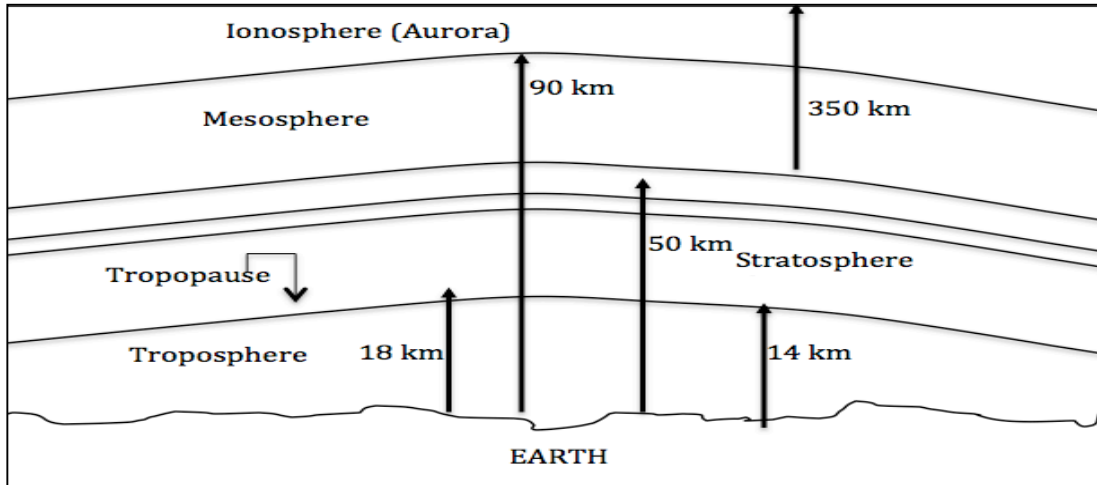
- A. V      B. IV      C. III      D. I

**QUESTION 23**

What is the correct process for making a law in Parliament?

- A. V, III, IV, II, I      B. II, IV, V, I, III  
C. II, V, I, III, IV      D. V, IV, III, II, I

For questions 24 and 25, refer to the earth's atmospheric layer below.



#### QUESTION 24

Where is the ozone layer located?

- |                |                 |
|----------------|-----------------|
| A. Troposphere | B. Stratosphere |
| C. Mesosphere  | D. Ionosphere   |

#### QUESTION 25

Which of these facts is not true about the ozone layer?

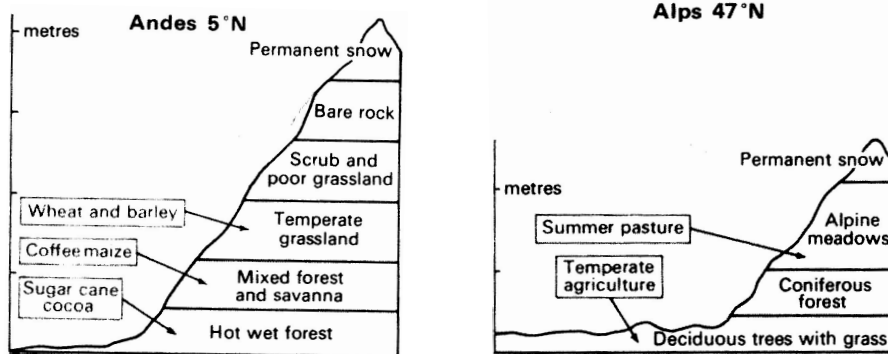
- A. Depletion of the ozone layer causes skin cancer.
- B. Acts like a blanket that absorbs sunlight.
- C. It is a type of oxygen molecule.
- D. It is poisonous to living things.



**PART B: SHORT ANSWERS (QUESTIONS 26 to 45) 20 MARKS**

For each question, work out the answer and write it in the spaces provided on the ANSWER SHEET.

For questions 26 and 27, refer to the diagram below.

**QUESTION 26**

Identify the climatic characteristic that is common in these two locations.

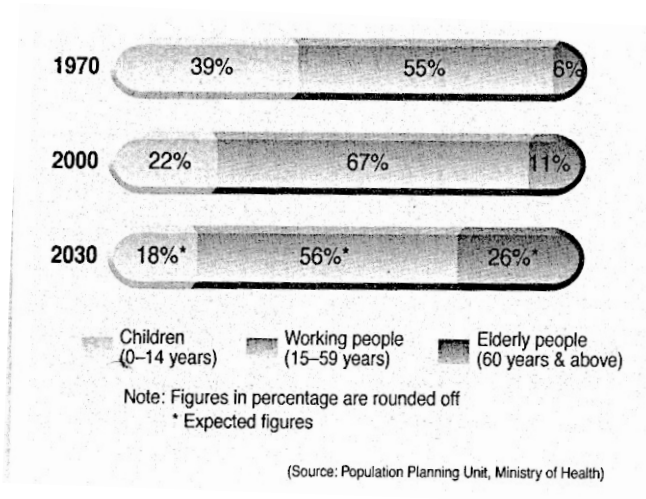
**QUESTION 27**

Which of these two locations is closest to the equator?

**QUESTION 28**

What is one method of sustainably managing products made from metallic substance (e.g. scrap metal iron, copper and tin cans)?

For questions 29 to 31, refer to the information below.



Singapore is a small island nation, which lies north of Indonesia. It is one of the countries in the world with a low rate of population growth. The consequences of a low population growth are an ageing population. With improved health care services and medical facilities, a high standard of living, more people are living longer.

### QUESTION 29

What percent of the age group made up the “dependency load in 1970?

### QUESTION 30

Which group would have a great decrease in their number between 1970 and 2030?

### QUESTION 31

The conclusion from the graph and the passage indicate that Singapore will face a problem with the \_\_\_\_\_ age group in the future.

### QUESTION 32

This type of farming is sustainable and it is practiced in most South East Asian nations for growing rice. Rice is planted on step like features cut on land, which is steep.

What is the farming method called?

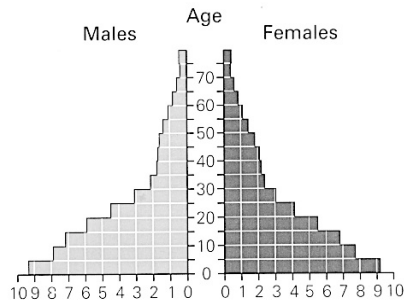
For questions 33 to 37, refer to the information in the table below.

Country	Land Area (000) km <sup>2</sup>	Population (000000)	Birth Rate (000)	Death Rate (000)	Life Expect (yrs)	Income per Capita (US\$)
A	1 200	75	40	19	60	110
B	18	0.8	28	15	65	2690
C	378	128	9	8	86	37 000
D	302	59	110	9	84	26 000
E	998	72	32	16	75	1310
F	7 692	21	12	10	85	28 900

**QUESTION 33**

Which country has the 2<sup>nd</sup> least population density?

**QUESTION 34**



Which country does this population pyramid best illustrate?

**QUESTION 35**

Which country shown in the table would be the most developed country?

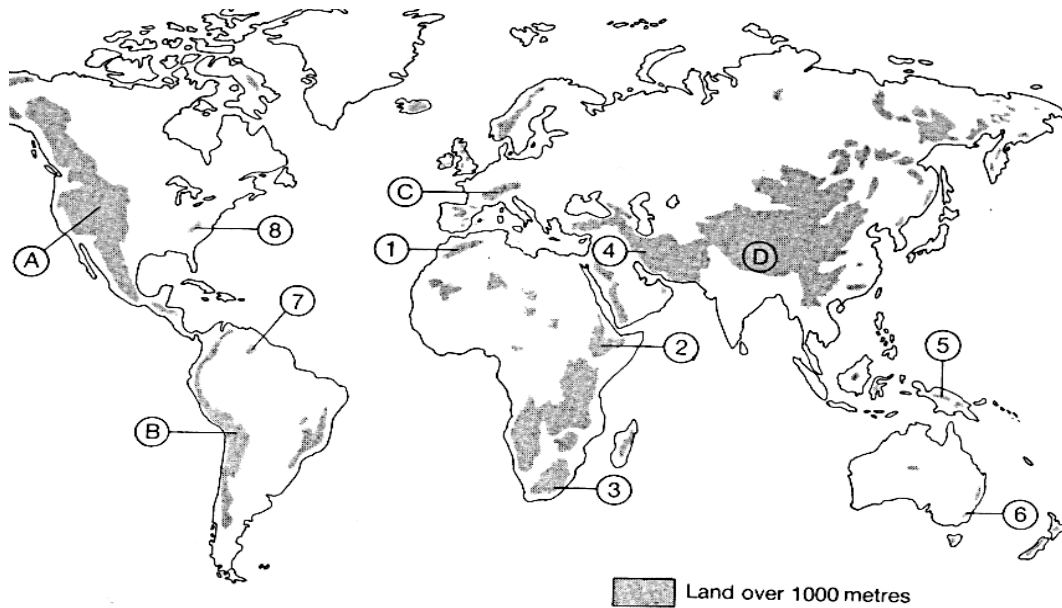
**QUESTION 36**

There are three factors that cause population to change. Two of the factors are listed in the table. Which factor is not listed in the table?

**QUESTION 37**

According to the table, the country that has the lowest growth rate is \_\_\_\_\_.

For questions 38 and 39, refer to the World Map below.



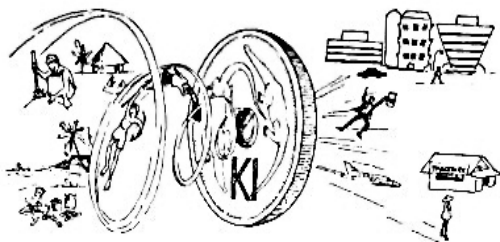
**QUESTION 38**

Name the mountain range represented by A.

**QUESTION 39**

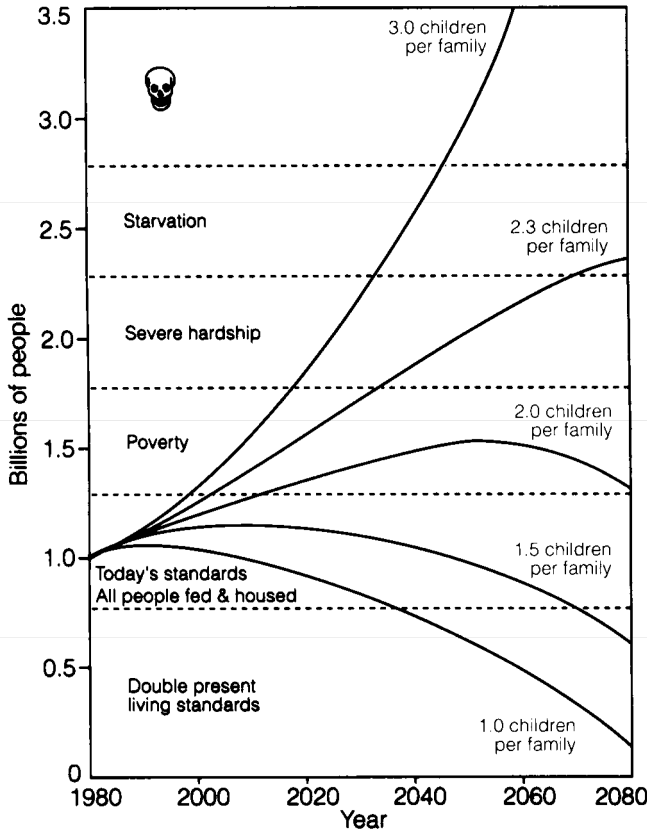
Name the mountain range that has the world's highest peak.

**QUESTION 40**



What type of migration does the diagram illustrate?

For questions 41 to 45, refer to the following chart that interprets the Chinese view on birth rate and its effect on social welfare.



**QUESTION 41**

How many children would a family produce in order for China to have a population that meets today's standards?

**QUESTION 42**

What would China's population be in 70 years time (from 1980) if there were 2 children per family?

**QUESTION 43**

If 2 children per family increase China's population, what effect of population increase would it face?

**QUESTION 44**

By allowing only one child per family, in what year is China hoping to double the standard of living of its people?

**QUESTION 45**

By 2060, China's population would reach 3.5 billion if families have 3 children.  
By how much would the population increase?

**PART C: EXTENDED RESPONSE**

**5 MARKS**

**For each question, work out the answer and write it in the space provided on the ANSWER SHEET.**



**QUESTION 46**

Refer to the map (NORTH AMERICA Political) to answer these questions.

<b>I.</b>	In which direction would a plane travel, from Miami to Dallas?	<b>IV.</b>	Calculate the straight-line distance from Houston to Los Angeles. ( <i>Use the scale on the map</i> ).
<b>II.</b>	Name the sea that is located between USA and USSR.	<b>V.</b>	Identify the city that is found at 39°N 105°W.
<b>III.</b>	A plane flies 1000km North East from San Francisco and lands. It takes off again from this city and flies for 1500 km South East and lands at its final destination.  Name the city that it would land on.		

**END OF EXAMINATION**

LOWER SECONDARY SCHOOL CERTIFICATE  
EXAMINATION – 2013

SOCIAL SCIENCE – ANSWER SHEET



MARKER 1

YEAR		PROV.		SCHOOL			CAND No.		
1	3								
NAME									
SCHOOL									

**PART A:** (Question 1 to 25)

Write the letter of your answer next to each question below.

1	
2	
3	
4	
5	

6	
7	
8	
9	
10	

11	
12	
13	
14	
15	

16	
17	
18	
19	
20	

21	
22	
23	
24	
25	

**PART B** (Question 26 to 45)

Write your answer next to each question below.

26	
27	
28	
29	
30	

31	
32	
33	Country _____
34	Country _____
35	Country _____

36	
37	Country _____
38	
39	
40	

**PART C** (Questions 46)

Write your answer next to each question below.

41	_____ children
42	billion
43	
44	
45	billion

46	I.	
	II.	
	III.	
	IV	kilometres
	V	



MARKER 2



**DO NOT WRITE ON THIS PAGE**

**YOU MAY DO YOUR ROUGH WORK ON THIS PAGE**

**CAREFULLY TEAR ALONG THIS PERFORATION**

**YOU MAY DO YOUR ROUGH WORK ON THIS PAGE**