



DEPARTMENT OF  
EDUCATION

LOWER SECONDARY  
SCHOOL CERTIFICATE  
EXAMINATIONS

(LSSCE)

PERSONAL  
DEVELOPMENT

Thursday

10 October 2013

Time allowed:

3 hours

(8:30 am – 11:30 am)

Candidates are advised to  
fully utilise the time allocated

PD

### INSTRUCTIONS TO CANDIDATES:

*(To be read out by the External Invigilator before the start of the examination)*

There are **46** questions in this paper worth **50** marks. Attempt ALL questions, even if you are not sure of some of the answers.

The Examination is divided into three parts:

**PART A:** Multiple Choice (Questions 1 to 25)

**PART B:** Short Answer (Questions 26 to 45)

**PART C:** Extended Response (Question 46)

The Answer Sheet is part of the Examination Booklet. Take out the middle pages and remove the Answer Sheet by tearing along the perforation. You may use the blank sheet for rough work.

Write your candidate number, name and school name in the space given on the **Answer Sheet**.

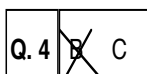
For each question in **PART A**, choose the correct answer by writing the letter A, B, C or D in the space provided on the **ANSWER SHEET**.

For each question in **PART B and C**, work out the answer and write the answer in the space given on the **Answer Sheet**.

If you find a question difficult, do not spend too much time thinking about it. Leave the question and go on with the rest of the paper. If you have time at the end, return to the difficult questions and think about them more carefully.

Write your answers in **BLUE** or **BLACK** pen.

If you decide to change an answer, make your correction as shown below so that it is clear to the markers what your final answer is. Do **NOT** use correction fluid on your answer sheet.



Hand in **BOTH** the Answer Sheet and the papers used for rough work at the end of the examination.

**Extra time will not be allowed to complete the examination under any circumstances.**

**Penalty for cheating or assisting others to cheat in national examinations is non-certification.**

**DO NOT TURN OVER THE PAGE AND DO NOT WRITE UNTIL YOU ARE TOLD TO START.**

**PART A: MULTIPLE CHOICE****(QUESTIONS 1 to 25)****25 MARKS**

**For each question, choose the correct answer and write A, B, C, or D in the space provided on the ANSWER SHEET.**

**QUESTION 1**

Ovulation method will only work effectively if

- A. woman will always say yes all the time to their partners.
- B. both man and woman ignore it.
- C. both partners do not have time at all.
- D. both man and woman communicate well with each other.

**QUESTION 2**

Which of the following is not true about the muscular system?

- A. It allows movement.
- B. It provides body awareness.
- C. It helps other body systems do their work.
- D. It allows the development of strength.

**QUESTION 3**

The main function of the arteries in the circulatory system is to

- A. carry blood away from the heart through the body.
- B. carry blood from the body to the heart.
- C. pump blood throughout the body.
- D. pass vital nutrients from the blood to the cells.

**For questions 4 to 5, refer to the following information on the effects of smoking to the body.**

- i. lung capacity decreases
- ii. cancers
- iii. pulse rate goes up
- iv. breath smells
- v. emphysema
- vi. heart disease
- vii. lungs coated by tar
- viii. hands shake
- ix. chronic bronchitis

**QUESTION 4**

Which group contains the short-term effects of smoking?

- A. i, iii, iv, and viii only
- B. iii, vi, viii and ix only
- C. i, iii, v and viii only
- D. iii, iv, viii and ix only

**QUESTION 5**

Which Roman numeral refers to a lung disease characterised as a permanent and serious condition of the lung?

- A. i                      B. v                      C. vii                      D. ix

**QUESTION 6**

Which of the exercises below is likely to improve your cardiovascular endurance?

- A. Jogging              B. Push-up              C. Weight lifting              D. Stretching

**QUESTION 7**

Which of the following methods of solving conflict requires the presence of a third party to bring peace between the conflicting parties?

- A. Negotiation              B. Mediation              C. Litigation              D. Compromise

**QUESTION 8**

What do you call the Law in Papua New Guinea that came into effect in 1965 which stipulates laws about marriage?

- A. Acts of Parliament                      B. Marriage Act  
C. Customary Law                      D. Marriage Law

**QUESTION 9**

Disabled children have the right to special treatment.

Which of the following is the most appropriate action one should do when such right is being deprived?

- A. Bring the special child to orphanage.  
B. Parents should hire caretakers.  
C. Give everything what the special child needs or wants.  
D. Fight for the right of the special child.

**QUESTION 10**

In the 1980s, AIDS began to appear in some parts of the world.

In Africa it was known as \_\_\_\_\_ disease.

- A. tall                      B. slim                      C. skinny                      D. losing weight

**QUESTION 11**

Below is a list of different types of abuses.

- |                       |                              |
|-----------------------|------------------------------|
| i) Hitting            | v) Social isolation          |
| ii) Unwanted touching | vi) Unwanted sexual activity |
| iii) Biting           | vii) Lack of affection       |
| iv) Repeated insults  |                              |

Which of the alternatives below are examples of emotional abuse?

- A. iv, v, vii      B. i, v, vi      C. ii, iii, vi, vii      D. i, iii, v, vi

**QUESTION 12**

Nutrients are compounds of food that are essential for an effectively functioning body. Vegetarians do not eat animal products, therefore the protein supply for their body must come from organic products.

Which Organic Products listed below contains all the plants with protein compound?

- A. Winged bean, Peanut, Avocado and Onion.  
B. Tomato, Soya bean, Peanut and Wheat.  
C. Soya bean, Avocado, Winged bean and Peanut.  
D. Peanut, Winged bean, Soya bean and Egg plant.

**QUESTION 13**

Below are some sports that many people actively participate in.

- i. Athletics      ii. Swimming      iii. Soccer      iv. Rugby League  
v. Gymnastics      vii. Netball

Which two sports mentioned above will require long hours of flexibility exercises?

- A. i and v      B. iii and iv      C. v and vi      D. ii and v

**QUESTION 14**

A person may become obese when he or she eats a lot of energy food.

Another meaning for the word obese is \_\_\_\_\_.

- A. addiction      B. full      C. heavy      D. over weight

**QUESTION 15**

Which diagram below shows the correct position when someone is unconscious?

A



B



C



D

**QUESTION 16**

Which of the following is not true about one's culture?

It is

- |                   |  |
|-------------------|--|
| A. learned.       | B. being passed from one generation to the next. |
| C. a way of life. | D. owned by individuals.                         |

**QUESTION 17**

Which religion is mainly found in Thailand?

- |             |          |            |             |
|-------------|----------|------------|-------------|
| A. Hinduism | B. Islam | C. Judaism | D. Buddhism |
|-------------|----------|------------|-------------|

**QUESTION 18**

The Judges in a National Court usually travel around the provinces to hear court cases.

This is known as \_\_\_\_\_.

- |                   |             |                |                   |
|-------------------|-------------|----------------|-------------------|
| A. Court hearings | B. Circuits | C. Proceedings | D. Supreme Courts |
|-------------------|-------------|----------------|-------------------|

**QUESTION 19**

During infancy, \_\_\_\_\_ is the most important influence towards the child's social development.

- |                |          |              |         |
|----------------|----------|--------------|---------|
| A. environment | B. media | C. parenting | D. peer |
|----------------|----------|--------------|---------|

**QUESTION 20**

People living with the AIDS virus are encouraged to live positively. Many are on a drug called ART.

The initial ART stands for

- |                                |                           |
|--------------------------------|---------------------------|
| A. Antiretroviral Therapy.     | B. Aids Relieve Therapy.  |
| C. Aids Restriction Treatment. | D. Aids Research Therapy. |

**QUESTION 21**

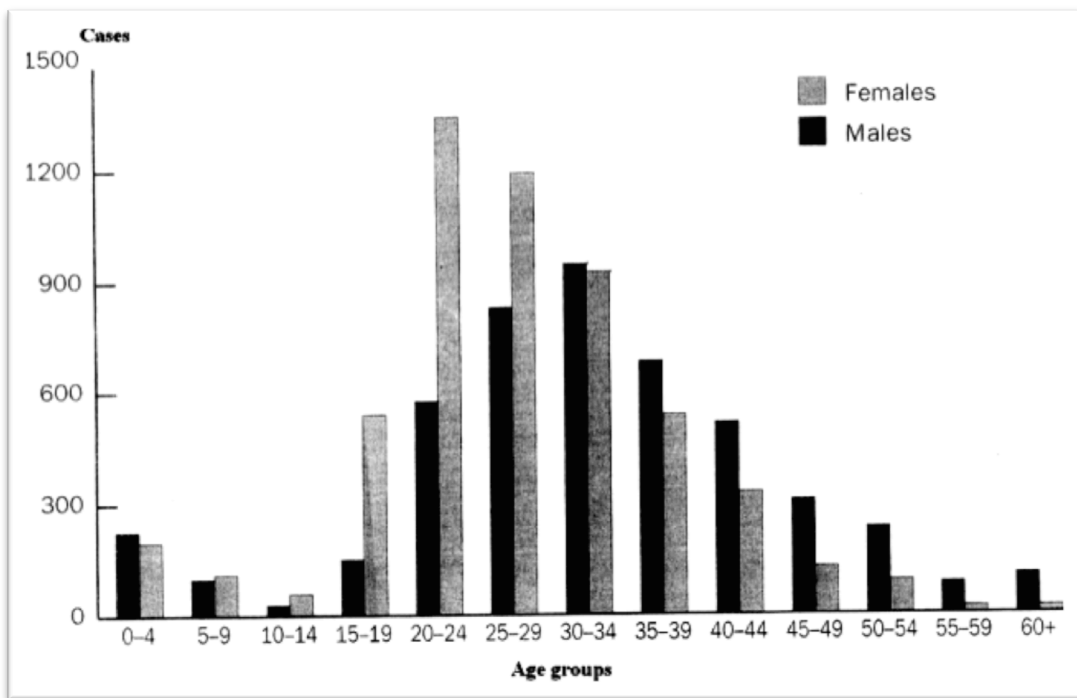
In Papua New Guinea societies we have what is termed as ‘*arranged marriage*’.

Which of the four basic rights of a citizen in this country is violated?

- A. Freedom of choice and movement.
- B. The right to live safely and securely in a healthy environment.
- C. Protection by Law.
- D. Freedom from cruelty and violent treatment.

**For questions 22 and 23, use the graph below.**

HIV infection detected in PNG by Age group and sex, 1987 – June 2006



Source: Health for the Pacific: HIV/AIDS & STIS in PNG Revised Edition.

**QUESTION 22**

The difference between the males and females who are HIV positive in the 20 - 24 age group category is approximately\_\_\_\_\_.

- A. 600
- B. 650
- C. 700
- D. 750

**QUESTION 23**

According to the graph, members of which age group are highly infected by HIV virus?

- A. Males between the ages of 35 – 44 years old.
- B. Females aged between 20 – 34 years old.
- C. Females aged between 15 – 29 years old.
- D. Males between the ages of 30 – 39 years old.

**QUESTION 24**

In Papua New Guinea, a couple can marry as they wish either through custom or statutory.

Which of the following statements best describes a *statutory* marriage?

A marriage

- A. that is monogamous.
- B. recognised by other people.
- C. that is legal upon payment of bride price.
- D. in which a couple signs a contract.

**QUESTION 25**

In a game of basketball, passing is one skill that you need to know.

What method of passing is shown in the diagram below?



- A. Straight pass
- B. Chest pass
- C. Normal pass
- D. Overhead pass

**PART B: SHORT ANSWERS****(QUESTIONS 26 to 45)****20 MARKS**

Write down the correct answer in the space provided on your answer sheet.

**QUESTION 26**

The Constitution of Papua New Guinea provides the Rights of Citizens.

The four basic rights are;

- i. freedom to make your own decisions and to go where you want to go.
- ii. the right to live safely and securely in healthy conditions.
- iii. protection by the Law.
- iv. freedom from cruel and violent treatment.

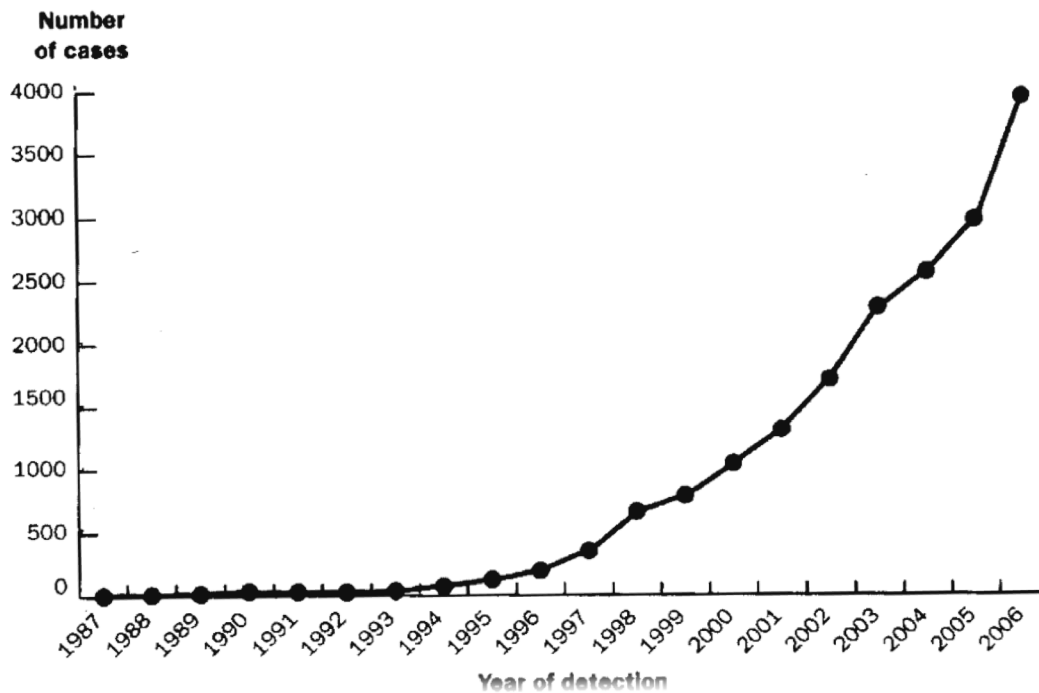
Which of the above stated rights best supports the fundamental principles of democracy?

**QUESTION 27**

Name the hormone that is produced by the ovary?

For questions 28 to 30, refer to the graph below.

**HIV infection in PNG, 1987 – 2006**



Source: [Health for the Pacific: HIV/AIDS & STIS in PNG Revised Edition.](#)

**QUESTION 28**

How many years did it take for HIV cases to reach the 500 mark?



**QUESTION 29**

The increase in the number of HIV cases between 1999 and 2006 was about \_\_\_\_\_.

**QUESTION 30**

In which single year did Papua New Guinea witness the biggest increase in detection of the number of HIV cases?

**For questions 31 to 33, use the following words to fill in the blank spaces.**

testicles, sperm, penis, scrotum, fertilise, produce
--

The main parts of the male reproductive system are the  (31)  and penis. The penis carries urine out of the body and carries sperm so that it can  (32)  an egg. The testicles hang in a bag of skin outside the body that is known as the  (33) .

**QUESTION 34**

Gonorrhoea is a communicable disease that can be transmitted through sex with an infected person.

What type of germ is transmitted causing the infection?

**For questions 35 and 36, refer to the information below.**

Drugs are classified into two major groups according to their function and legality. Under function, drugs are further classified into four groups:

- (i) Stimulants                      (ii) Depressants                      (iii) Laxatives                      (iv) Hallucinogens

**QUESTION 35**

Under what category is Panadol in when taken to relieve headache?

**QUESTION 36**

Tea and coffee are classified as legal drugs. When taken in large amounts they cause alertness.

What type of drugs are they?

**QUESTION 37**

Refer to the following related lifestyle risk factors.

- |   |                          |
|---|--------------------------|
| i. being obese.                                     | iv. high blood pressure. |
| ii. high level of fats and cholesterol in the body. | vi. lack of exercise.    |
| iii. high stress levels.                            | v. smoking.              |

Name the specific organ of the body that is most likely to be affected by all the above factors.

**QUESTION 38**

There are few long distance endurance events in which athletes take part in. One of them is the 40.2 kilometres race.

What is the name of this long distance event?

**QUESTION 39**

DRABC is a process of applying First Aid to an injured person.

What does letter R stand for?

**QUESTION 40**

What do you call the drug or substance found in tobacco which increases heart and breathing rates?

**QUESTION 41**

The admirable qualities that we see in others often make us determined to work towards possessing the same qualities.

What is the term given to these particular people we admire?

**QUESTION 42**

Poisoning caused by taking too much of a drug which can lead to death is called\_\_\_\_\_.

**QUESTION 43**

There are four levels of Court system in Papua New Guinea.

Which level has the final appellate jurisdiction?

**For questions 44 and 45, refer to the following words.**

empathy, harassment, vilification, optimism, resiliency
---

**QUESTION 44**

The act of committing actions that have the intent or effect of offending, humiliating or intimidating others is known as\_\_\_\_\_.

**QUESTION 45**

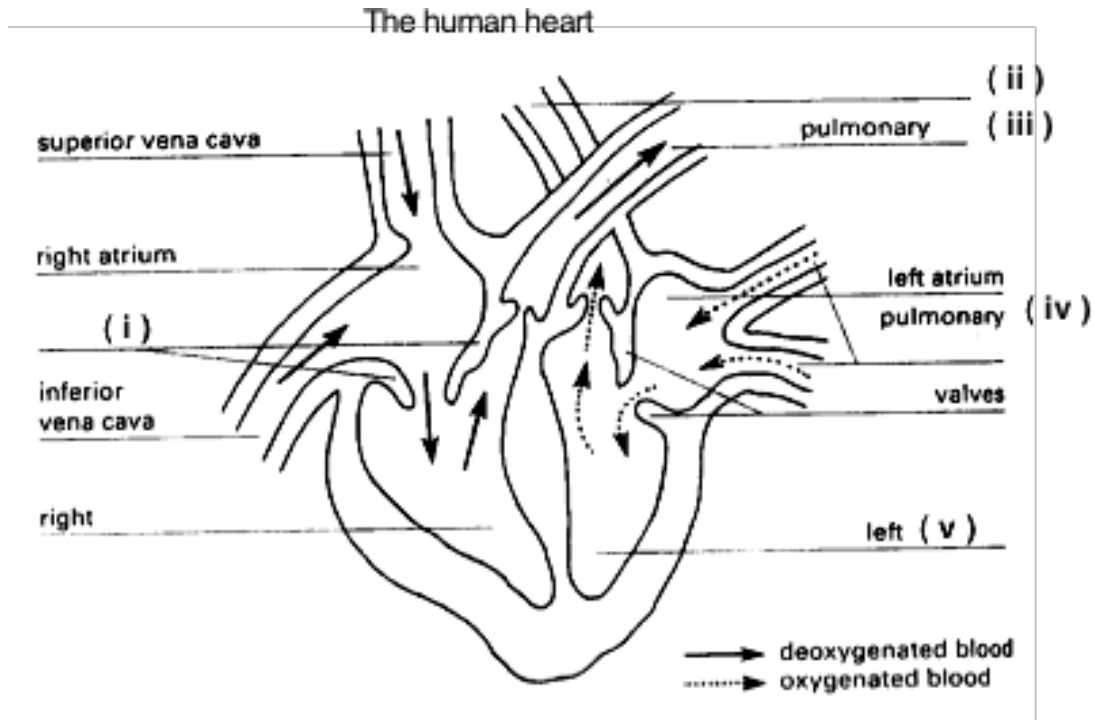
The act of inciting hatred, expressing serious contempt or inflicting serious ridicule on others is called\_\_\_\_\_.

**PART C: EXTENDED RESPONSE**

**5 MARKS**

Write the correct word on your answer sheet.

Study the diagram of the human heart below.



**QUESTION 46 (i – v)**

Identify and label the different parts of the human heart.

Number	Name of heart part
(i)	_____
(ii)	_____
(iii)	_____
(iv)	_____
(v)	_____

**END OF EXAMINATION**

**PERSONAL DEVELOPMENT – ANSWER SHEET**



**MARKER 1**

YEAR		PROV.		SCHOOL			CAND No.		
1	3								
NAME									
SCHOOL									

**PART A:** (Questions 1 to 25)

Write the letter of your answer next to each question below.

1	
2	
3	
4	
5	

6	
7	
8	
9	
10	

11	
12	
13	
14	
15	

16	
17	
18	
19	
20	

21	
22	
23	
24	
25	

**PART B** (Questions 26 to 45)

Write your answer next to each question below.

26	
27	
28	
29	
30	

31	
32	
33	
34	
35	

36	
37	
38	
39	
40	

**PART C** (Question 46)

Write your answer next to each question below.

41		(i)	
42		(ii)	
43		(iii)	
44		(iv)	
45		(v)	



**MARKER 2**

**DO NOT WRITE ON THIS PAGE**

**YOU MAY DO YOUR ROUGH WORK ON THIS PAGE**

**CAREFULLY TEAR ALONG THIS PERFORATION**

**YOU MAY DO YOUR ROUGH WORK ON THIS PAGE**