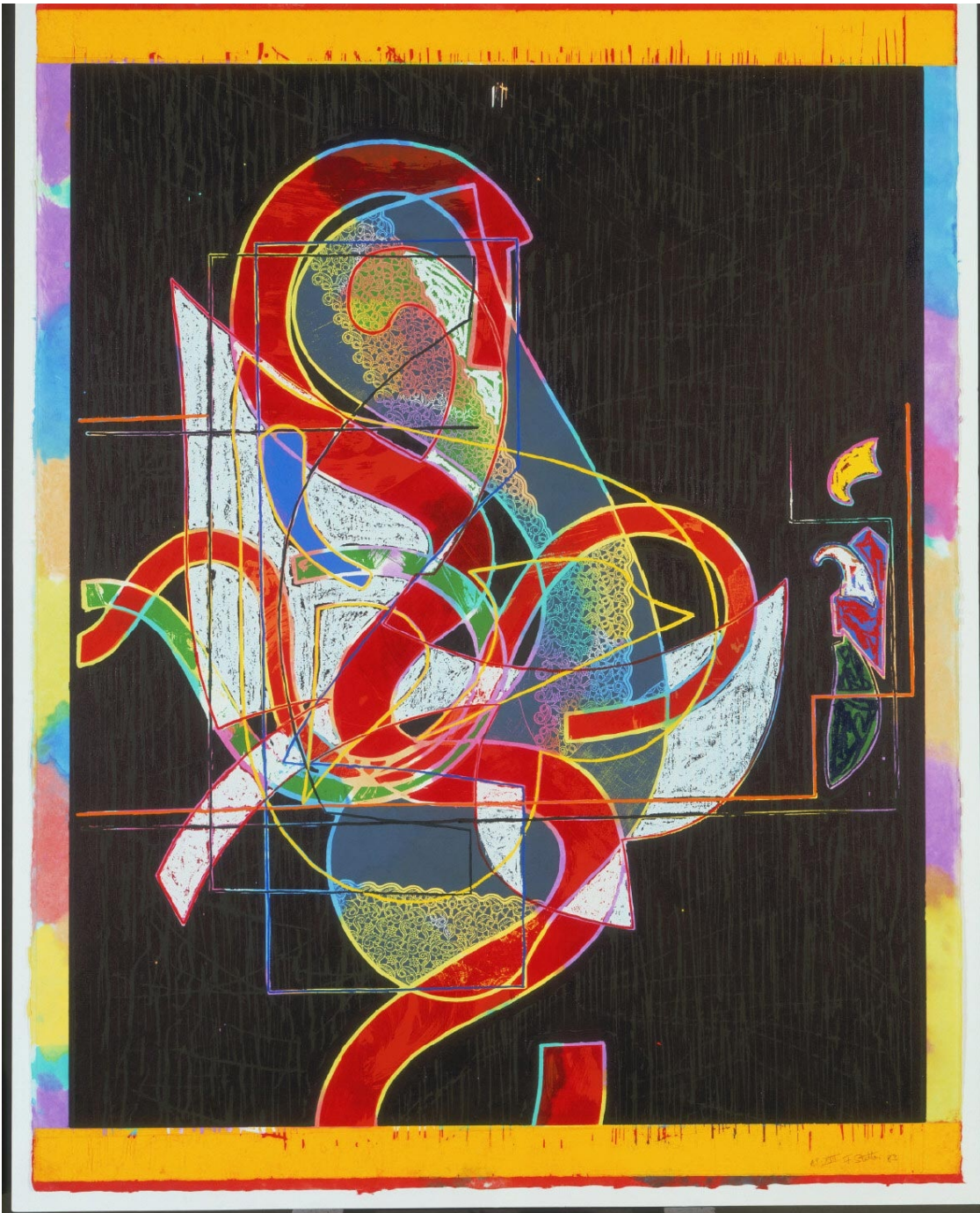




Collections : Search Collections (/collections/search.html)



usa Three
From the series Circuits,
1982-84

Frank Stella, American,
born 1936. Published by
Tyler Graphics, Ltd.,
Bedford, New York.

Date:
1982-1983

Medium:
Relief-printed etching and
woodcut on handmade
paper

Dimensions:
Sheet: 66 3/8 × 51 1/2
inches (168.6 × 130.8 cm)
Framed: 70 1/2 × 55 1/2
× 3 1/2 inches (179.1 ×
141 × 8.9 cm)

Copyright:
© Frank Stella / Artists
Rights Society (ARS), New
York

Curatorial Department:
Prints, Drawings, and
Photographs

Object Location:
Currently not on view

Accession Number:
1986-58-1

Credit Line:
Purchased with the Lola
Downin Peck Fund (by
exchange) and gift (by
exchange) of the estate of
Mrs. Charles M. Lea, 1986

Social Tags [? (/collections/socialTagging.html)]

There are currently no user tags associated with this object.

[Add Your Own Tags]

Explore the Collections

4

This Artist/Maker (/collections/results.html?searchTxt=&bSuggest=1&searchNameID=18925)
Classification (/collections/results.html?searchTxt=&bSuggest=1&searchNameID=&searchClassID=5)

© 2018 Philadelphia Museum of Art (<http://www.philamuseum.org/copyright.html>)

[Search](http://www.philamuseum.org/search.html) (<http://www.philamuseum.org/search.html>) | [Sitemap](http://www.philamuseum.org/sitemap.html) (<http://www.philamuseum.org/sitemap.html>) | [Privacy & Security](http://www.philamuseum.org/webpolicies.html) (<http://www.philamuseum.org/webpolicies.html>) | [Contacts](http://www.philamuseum.org/contacts/) (<http://www.philamuseum.org/contacts/>)



(<https://twitter.com/philamuseum>)



(<https://www.facebook.com/philamuseum>)



(<http://philamuseum.tumblr.com/>)



(<http://instagram.com/philamuseum>)



(<https://itunes.apple.com/WebObjects/MZStore.woa/wa/viewArtistSeeAll?cc=us&dkld=4&ids=185692647§ion=0>)